



## THE AUSTIN GENEALOGICAL SOCIETY NEWSLETTER

Next Meeting: November 28, 2017

### **AGS Annual Fall Festival and Presentation: The Archives Wars by James Harkins**



Austin Genealogical Society (AGS) members and a guest are invited to our annual Fall Festival. AGS will provide brisket and turkey from Rudy's, iced tea, water, and plates, silverware, napkins, and cups. Please bring a dish to share and a serving utensil for that dish. These dishes to share include salads, vegetables, desserts, or some other special food item.

**Please RSVP by Sunday, November 19<sup>th</sup> to Debbe  
Tipping at [dtipping@att.net](mailto:dtipping@att.net) or 512-341-7932.**

### **What's in the November newsletter?**

[Welcome new members](#)  
[DNA and Genealogy](#)  
[Upcoming Events](#)  
[From the President's  
Corner](#)  
[Preserve Your Research](#)  
[Meeting Handouts](#)  
[Find-A-Grave Changes](#)  
[October Meeting Recap](#)  
[Genealogy Conversation  
Starters](#)  
[Your Relative in AGS](#)  
[AGS Education](#)  
[Instructors](#)  
[AGS on Facebook](#)  
[AGS DNA SIG](#)  
[AGS Writing SIG](#)  
[AGS British Isle SIG](#)  
[2017 AGS Calendar](#)  
[2017 AGS Class  
Schedule](#)  
[Local Genealogy  
Meetings](#)

### **Genealogy Conversation Starters**

For our November meeting we will continue to gather the names of our veterans both past and present. Please bring the names of the veterans in your family tree and write them on the poster boards before the

## Presentation: **The Archives Wars**

Austin has always been a little weird. Austin's early history has defined Austin as the capital city of Texas. This presentation is a good example of how the saying, "Actions have consequences." In Austin, the Archives War has been romanticized in Austin folk-lore as an early example of strong, local pride, and archivists have latched on to this event to show the power of archives. However, the incident had far-reaching consequences. Positive consequences for the citizens of Austin, and negative consequences for the rest of the Republic of Texas.

Speaker: **James Harkins**

**James Harkins** is the Manager of Public Services for the Texas General Land Office Archives and Records Program. James graduated from Texas State University, San Marcos, with a bachelor's degree in Communications in 2005 and a double minor in history and business. In 2010, he received a Master's Degree in Public Administration from Texas State, and is the 2010-2011 James W. McGrew Research Award winner for his graduate thesis from the American Society for Professional Administrators (ASPA). He has worked for the Texas General Land Office since May of 2005, and manages the Save Texas History program of the Texas General Land Office. He is a Certified Archivist through the Academy of Certified Archivists (ACA).

**6:00 p.m.** Bring your dish along with any necessary serving utensils.

**6:15 p.m.** Dinner and social time

**7:00 p.m.** Presentation begins.

Highland Park Baptist Church

[5206 Balcones, Austin, TX 78731](#)

---

## Welcome New Members!

William Eric Beckers

Pat Casey

James Manzer

---

meeting. You can also add the branch of service and/or unit information and dates served.

---

## AGS Member - We Found Your Relative!

As new members Katharine and Ruth Teleki were reviewing last month's Genealogy Conversation Starters veterans board, they found two veterans that they recognized: "**Johann Kiesling**" serving in the Civil War and "**Roy Kiesling**" in WWI. Johann is Ruth's great-grandfather! They know a lot about the Kieslings and would like to find you. Please send a note to [newsletter@austintxgensoc.org](mailto:newsletter@austintxgensoc.org) and we will connect you.

---

## AGS 2017 QUARTERLY VOL. 4 DEADLINE NOVEMBER 17

Click [here](#) for submission guidelines.

---

## AGS Education Instructors

If you are interested in teaching or assisting with a genealogy related class either at a public library or for the next session of LLI (Lifetime Learning Institute), please contact

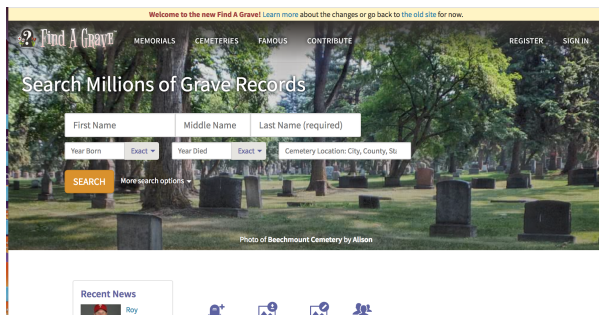
## Time to Renew Your AGS Membership

Before the holidays kick into full gear, take a moment and renew your AGS membership for 2018. It promises to be an exciting year that you will not want to miss.

[austintxgensoc.org/membership-account/membership-levels/](http://austintxgensoc.org/membership-account/membership-levels/)

## Find-A-Grave Will Change

*Submitted by Ted Bainbridge, Ph.D., member of the Speakers Bureau of the Colorado Council of Genealogical Societies*



[Findagrave.com](http://Findagrave.com) has announced that the web site soon will change. Some changes are cosmetic, while others are functional. A map feature has been added.

The home page, formerly just a list of over thirty choices, will become a photograph with a few menu selections across the top. That page will be dominated by the search panel, which will function largely as it has in the past and with the same options for every search box except those related to location.

The current search panel specifies location via pull-down lists for country, state, and county. The new search panel offers a single box for location, in which you are supposed to type the name of a place. As you begin to type a city, county, state, or country that box auto-fills with suggested place names which you can select with a mouse click. Use the American English equivalent of a country name; *Germany* works but *Deutschland* doesn't.

The new home page's menu bar goes across the top of the screen. Clicking *CEMETERIES* takes you to a page that lets you hunt cemeteries in either of two ways. Near the top left of the page is a search box where you can type

Cari Taplin at [education@austintxgensoc.org](mailto:education@austintxgensoc.org).

## AGS on FaceBook

[Austin Genealogical Society](#) - Posts on this site include information about the AGS monthly programs, the annual AGS Seminar, and AGS classes. **"Liking" this page helps get the message out to more people on Facebook! Please "like" posts when you see them to help market our Society.**

[Austin Genealogical Society Members Helping Members](#) (public group) - Posts on this site include genealogy-related topics such as webinars, websites, and classes not sponsored by AGS. Members of the group may request help with any particular issue they are experiencing with their own research.

[Austin Genealogical Society Writing SIG](#) (closed group) - AGS Members interested in writing a personal or family history are encouraged to join this Facebook group and attend the monthly meetings (see below for details.)

**CHECK OUT OUR  
CALENDAR!**

a cemetery name. This auto-fill box works as above. When you select a name, you see a hit list of cemeteries with that name. Each entry on the hit list displays some facts about that cemetery, and a link to its information page. That page contains a search box that you can use to hunt for a person's name.

Instead of using that cemetery-name search box, you can use the cemetery-place search box to its right. Clicking a place name produces a map of cemeteries near that place. You can zoom the map in or out, and can pan it in any direction. (If the map doesn't display any marker pins, zoom in.) After a name is in that search box, clicking *Search* leads to a hit list of cemeteries near that place. Use this hit list the same way you use the other cemetery search box.

To see and experiment with all the planned changes, go to <https://findagrave.com/> and then click *preview now* near the top center of the screen.

For more information regarding Mr. Bainbridge, please review his biography in the *Speakers Bureau of the Colorado Council of Genealogical Societies* directory at: <http://www.cocouncil.org/speakersbureau.html>



## DNA and Genealogy

### Preparation for Blaine Bettinger's Seminar in May 2018

by AGS Member *Debbe Tipping*

Mitochondrial DNA (mtDNA) comes from the mitochondria, organelles located outside of the nucleus. mtDNA is passed from a mother to her children. Like the yDNA discussed in an article in the September AGS Newsletter ([link](#)), mtDNA is unique because the order of the genes does not change very often. It is possible that any woman reading these words has the same, or nearly the same, mtDNA as her second great-grandmother to her seventeenth great-grandmother.

The latest schedule for AGS classes, events and meetings is always available on the website [here](#).



### AGS DNA SIG

***First Tuesday of every month. Next meeting December 5, 6:30 – 8:30 PM***

**Pok-E-Joe's**

[2121 Parmer Lane, Austin, TX 78727](#)

*Three blocks east of Mopac on Parmer Lane*

We will review chapter 8 in *Genetic Genealogy in Practice*. You do not need to have the book, but it is advised. If you have tested your DNA or are thinking about it, join us! See the [AGS website](#) to register and obtain more information.

The book is available from [Amazon](#) for \$36 paperback or \$9.99 for the Kindle edition. If you are a member of NGS, it is available for \$30.06, or \$36.06 for non-members.

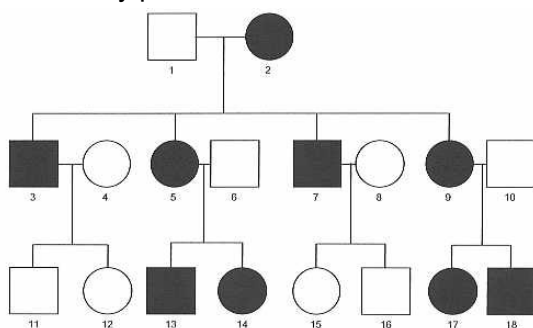
If you plan to attend, please register at the link below.

[More information](#)

The continuity of genetic information allows us to test for the following:

- African or Native American heritage of the female line
- If the two women we are comparing are from the same female line
- From which of two women, who are not related, a person descends

This continuity of genetic information also prevents us from determining close female relationships. It is impossible to sort those close relationships out with mtDNA alone. As you can see from the chart below, this test is limited to the females in a specific line. So this test alone leaves many potential relatives untested.



Let's look at some examples of how this test can help us.

Through mitochondrial DNA testing one can learn his or her haplogroup from their mother's ancestry, just like the yDNA test can for a person's father's ancestry. There are very specific haplogroups for African and Native American heritages. If there is a family legend that there were Native Americans on your mom's side of the family, testing you or your mom can tell you about that line of the family. If your mom does not test as Native American, then you need to test your dad or his mother to see if the heritage came from that line. If your dad's side of the family does not test as Native American, then keep tracing your dad's family backward on the female side to find living descendants to test.

A second example of how mtDNA can help us is determining if two women are from the same maternal line. Let's say there is a single woman who always



**AGS Writing SIG**  
**Second Thursday of**  
**every month - no**  
**meeting in December**  
**Thursday, November 9,**  
**6:30 - 8:30 p.m.**  
Cafe Express  
[3418 N Lamar Blvd, Austin,](#)  
[Texas 78705](#)

The purpose of the Writing SIG is to support each other in writing our family histories. We meet once a month and have dinner together while we discuss genealogical topics and share our latest work. Our successes thus far: a self-published book, several blog entries, several memoirs, and a regular article published in the newsletter! Come and get inspired with the rest of us! Open to members of AGS.

[More Information](#)



**AGS British Isles**  
**Genealogy SIG**



appears next door to one of your ancestors. She even moves to a new state, seemingly, with the family. You guess she must be related somehow. Thankfully, she has living female line descendants. The chart above shows the living female line descendants of the woman at the top of the chart. You can test a living descendant of that ancestor. If the two match, then the mystery woman could be a sister, aunt, niece, etc. from the female line. If they do not match, then the mystery woman is not related on the ancestor's female line. You can find a living descendant of the ancestor's male line to see if the mystery woman is his sister, aunt, etc.

A third example of how mtDNA can help us is in the case of a man with two wives and multiple children. You determined that the child is definitely from that man, but which wife is the mother? To solve that relationship issue you would need three tests. One test from a known female line descendant of the first wife, one test from a known female line descendant of the second wife, and a test from a known female line descendant of the child you found. As long as the wives are not related, you can quickly determine which wife was the mother of your child in question.

Family Tree DNA is one of eight testing companies that offer mtDNA tests. Family Tree DNA offers two tests. With our examples above, you would need to use only the less expensive test in the HVR1 and HVR2 regions.

The more expensive test for mtDNA is the full sequence test. mtDNA is much smaller than the DNA in the nucleus, so a test to determine every location on the mtDNA is not horribly expensive. This test improves the qualities of your matches and allows more specific haplogroup identification.

There are surname studies and location studies for mitochondrial DNA. With the way surnames are used in our society, a surname study seems like an unusual group for female descendants. These mitochondrial surname studies are to explore the relationships with a particular female whose maiden surname is used. Some of these groups require you to share your mtDNA results to join. Other groups allow you to see the results of kits submitted to their group.

**AGS British Isles  
Genealogy Special  
Interest Group** meets via email to exchange information. Contact Jane Schwendinger at [janesca@earthlink.net](mailto:janesca@earthlink.net).

---

## **AGS 2018 Calendar**

*Meetings are held on the 4th Tuesday (no meeting in December),  
Networking: 6:30 PM /  
Program: 7:00 PM  
Highland Park Baptist  
Church, [5206 Balcones,  
Austin, TX 78731](#)*

We will be posting the schedule for our 2018 speakers early next year on our [website](#).

---

### **AGS Website**

Did you forget your login or password to the Members Only section? Problems renewing a membership?  
Contact: [webmaster@  
austintxgensoc.org](mailto:webmaster@austintxgensoc.org)

---

## **AGS 2017 Class Schedule**

*Information about our classes is available [here](#).  
All classes are free.*

**Saturday, December 9,  
1:00 - 3:00 p.m.  
How to Teach a  
Genealogy Class –  
Panel and Workshop**  
North Village Branch  
Library  
[2505 Steck Ave, Austin,](#)

If you are interested in learning more about DNA, we have a DNA SIG (Special Interest Group) that meets the first Tuesday of each month. They are studying the book *Genetic Genealogy in Practice* by Blaine Bettinger and Debbie Parker Wayne. [Click here](#) for more information.

If you have any questions, please email me at [dtipping@att.net](mailto:dtipping@att.net). In January, we will explore autosomal DNA tests and how they can help our research.

*Special thanks to AGS member Reneé Lasswell for her helpful suggestions for this article.*

---

## Upcoming Events and Resources



Austin Veterans Day Parade

**Saturday, November 11**

Parade Route: from the Ann W. Richards Congress Avenue Bridge up Congress Avenue to the Texas State Capitol

Honor our veterans! Our theme this year is the military poppy and the actions in Flanders Field that inspired the poem at the end of World War I.

[More Information](#)



**Rootstech 2018**

**February 28 - March 3, 2018**

**Salt Lake City, Utah**

[More Information](#)

[TX 78757](#)

*Registration is required for this class to insure there are enough handouts. To register: [link](#)*

This will be a panel discussion and workshop for anyone interested in learning how to teach their own genealogy class. The panel members are Teri Flack, Sara Gredler, Cari Taplin, C.G. and Randy Whited. There will be a short lecture, a panel discussion with local genealogical speakers, and then a workshop period to help attendees develop their ideas for teaching a class or get tips on public speaking.

---

### Do You Have a Brick Wall? A Genealogical Question?

Feel free to send it in for the newsletter to [newsletter@austintxgensoc.org](mailto:newsletter@austintxgensoc.org) or post it to our Facebook page, "Austin Genealogical Society Members helping Members."

---

## Local Genealogy Meetings and Resources

**Austin Gen SIG**, meets from 1:00–4:00 p.m. the second Saturday of the month at Old Quarry Branch, Austin Public Library, [7051 Village Center Dr., Austin](#). Click [here](#) for website.

**Austin Legacy Users Group** meets on the third Saturday of the month from 1:00-3:00 p.m.



**National Genealogical Society  
2018 Family History Conference  
May 2-5, 2018  
Grand Rapids, Michigan  
"Paths to Your Past"**

Choose from more than 175 lectures presented by many nationally recognized speakers, explore an exhibit hall filled with more than 80 exhibitors, and network with over 2,000 genealogists. Every NGS conference has a different theme with a new program top to bottom - so there is always much new to learn and discover.

Registration opens December 1

[More Information](#)



**AGE Computer Lab  
3710 Cedar Street  
Austin, Texas 78705  
GENEALOGY LEARNING/SHARING – An Opportunity!**

The Computer Labs at AGE (Austin Groups for the Elderly), are NOT just for the elderly. In fact, if you are young, or even young at heart, they are for YOU.

2018 marks our Genealogy Club's fourth year. We are a multi-level, multi-interest group who learn and share genealogy information, programs, techniques, coffee, and more. That "more" also means more for 2018. We'll have

at the [Querencia at Barton Creek, 2500 Barton Creek Blvd., Austin](#). Click [here](#) for website.

**Texas State Library** is open from 9:00 a.m.-4:00 p.m. the second Saturday of each month. 1201 Brazos in Austin. Questions concerning Second Saturdays may be sent [here](#). Click [here](#) for website.

**Williamson County Genealogical Society** meetings are held the third Thursday of each month at the [Round Rock Public Library, 216 E Main Street, Round Rock](#). Social time at 7:00 p.m. with the meeting at 7:30 p.m. Click [here](#) for website.

**Austin Public Library Genealogical Resources**  
Click [here](#) for website.

---

**Got something for the newsletter?**

Submissions are welcome - due the first day of the month for each submission.

[newsletter@  
austintxgensoc.org](mailto:newsletter@austintxgensoc.org)

---



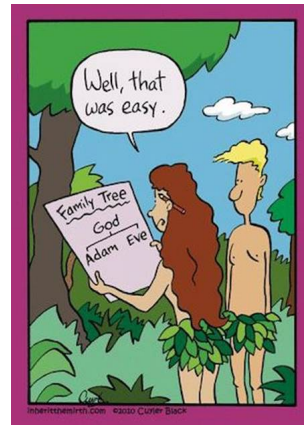
big news about more learning opportunities next month!

Eleven two-hour sessions devoted to you and genealogy are yours - and you can sign up here:

<http://www.agecomputer.org/courses0/RegFormOnline.php>

(Cost is less than \$10.00 per session – you won't find a better genealogy bargain.)

[More Information](#)



## From the President's Corner



Anne Mamiya, AGS President

[president@austintxgensoc.org](mailto:president@austintxgensoc.org)

Last month we held our elections for 6 places on the Board of Directors. We had 5 nominees and no further nominations from the floor. These 5 nominees were elected. We will hold a brief election at our November meeting for the remaining open place so that our Board will be complete going in to 2018.

Please help me congratulate the following who will make up our Board of Director in 2018!

### Term Ending in 2018

James E. Bridges  
Dianne Holley  
Nan Kilkeary  
Rob Richardson  
Jean Shroyer  
Debbe Tipping

### Term Ending in 2019

Millijon Crowell  
Angela Doetsch  
Erin Garcia  
Jean Marostica  
Robin Raben  
*Open*

I would like to take this opportunity to thank everyone that I have worked with during my years on the AGS Board, especially these past 3 years as President. There is a lot of work that goes into running this organization and I am so ever grateful to all the volunteers that have worked

hard to make AGS what it is today.

I would also like to thank the other board members whose terms expire this year and will be leaving the board: Marcia Arn (Program chair-4 yrs), Teresa Devine (Seminar chair-1yr), and Cari Taplin (Education chair-2yrs). All three have contributed greatly to AGS and deserve a big THANK YOU!

I hope that you will think about giving some of your time to AGS. Think about the things you like to do and where you see a need. It doesn't have to be a large time commitment and it allows you the opportunity to really get to know some of the other people in the organization.

Please join us at the November meeting where we will share a meal together, enjoy visiting with one another, and still get to hear a great program. This is my favorite meeting of the year and I hope to see you there!

---

## **Preserve your research at the Allen County Public Library**

*by AGS Member Marcia Arn*

The Allen County Public Library -- holder of some of the nation's most prestigious and complete genealogical research collections -- has two programs designed especially to support your personal research. All you have to do is call them at 260-421-1225 and ask, because the programs aren't listed on their website.

Both of the programs below put your personal research into permanent form and enter it into their collections. You get a copy of the organized material.

- **Photocopy Exchange Program - A Bound Book of Your Research**

If you deliver your research paperwork, documentation, pictures and a printed genealogy software report by hand, send it by snail mail or digitally, in as organized a fashion as possible, they will copy it for you and them, and will make a bound book, sending it to you with the original paperwork. They will also make a copy of the book for the library. Another option is for them to digitize your papers, etc, and with your permission, put it online

on their website. With that option they would still make you a book if you want it. If you don't want it online, they will make a book for the library too. It could take 4-6 months. The product will be better if the information is in an organized manner so they can understand it. They are not doing research on it, just putting it into book form.

- **Manuscript Archive Collection**

Say your grandmother who has done research for years dies and no one is interested in having it, or you have been doing it for years and none of your children want to continue. It can be donated to the library and would be digitized and put on their website for everyone's benefit. Again, the more organized the information, the better, and a genealogy report is most helpful. However, they will take it in any state, but there is no promise on the time period it will take to organize and have the work put online. Having a relative doing research save their work in a report periodically, or print a genealogy report out perhaps once a year would be a good way to have the report preserved for when the time comes.

If you have a different scenario or would like to ask questions about either of these programs, I encourage you to call them directly and talk about it.

---

## **Survey says: Members want Handouts!**

More than 40% of the members responding to the recent survey concerning speaker topic preferences were not aware that speaker handouts from previous meetings can be downloaded from the AGS web site!

Each month, with permission from the speaker, we post handouts to the Members Only website page:

<http://www.austintxgensoc.org/members-only>.

Click on the link for "Selected [handouts](#) from AGS meetings" where you will be able to view and/or download handouts from prior meetings.

Enjoy!

---

## October Meeting Recap

**Topic:** I've Got My DNA Results. But How Do I Use Them?

**Speaker:** Sara Gredler

**October Meeting Attendance: 63 (includes 13 visitor and 1 new member)**

October Handout (see Handouts section): <http://www.austintxgensoc.org/members-only/>

Thank you to the following volunteers for their help at the October meeting:

Shelley Augustin, Robin Raben, Anne Mamiya, Susan Shaw, Earle McBride, Erin Garcia, Lise Doss, Sheila Sargent, Chris Bond, Judith & Tom Morris and Dee Sanchez.



---

*Copyright © 2017 Austin Genealogical Society, All rights reserved.*

Want to stop receiving these emails?

[Unsubscribe from this list](#)

MailChimp