



QUARTERLY

Volume 49, Number 3/4

December 2008

**P.O. Box 10010
Austin, Texas 78766-1010**

www.austintxgensoc.org

AUSTIN GENEALOGICAL SOCIETY

P.O. BOX 10010, AUSTIN, TEXAS 78766-1010
www.AustinTxGenSoc.org

OFFICERS 2008

Tommy Ingram, *President*
Kay Dunlap Boyd, *First Vice-President*
Cindy Foreman, *Second Vice-President*

Teri Flack, *Treasurer*
Inez Eppright, *Recording Secretary*

BOARD OF DIRECTORS

2008 Term

Kay Dunlap Boyd	Sharon Foley
Inez Eppright	Connie Perdue
Cindy Foreman	Janis Trayler

2009 Term

Tommy Ingram	Barbara Innis
Robert Sage	Randy Whited
Elizabeth Johnston	Teri Flack

COMMITTEE CHAIRS AND APPOINTMENTS 2008

<i>Cemetery</i>	Kay Dunlap Boyd
<i>Education and Programs</i>	Cindy Foreman
<i>Finance</i>	Teri Flack
<i>Hospitality</i>	Sharon Tieman
<i>Lifetime Learning</i>	Inez Eppright
<i>Membership</i>	Barbara Innis
<i>Publicity</i>	Elizabeth Johnston
<i>FGS Delegate</i>	Pat Oxley

<i>TSGS Delegate</i>	Teri Flack
<i>Mail Officers</i>	Jean and John Marostica
<i>Membership Directory</i>	Jean Marostica
<i>Newsletter Editor</i>	Janis Trayler
<i>Quarterly Editor</i>	Randy Whited
<i>Quarterly Librarian</i>	Kay Dunlap Boyd
<i>Records Compiler</i>	Kay Dunlap Boyd
<i>Webmaster</i>	Yvonne Beever

QUARTERLY SUBMISSIONS AND INQUIRIES

While material and correspondence may be sent to AGS Quarterly Editor, P. O. Box 10010, Austin, Texas 78766-1010, it is greatly preferable that submissions are emailed to quarterly@austintxgensoc.org.

EXCHANGE QUARTERLIES Send quarterlies and correspondence about them, such as change of address or that you failed to receive yours, to AGS Quarterly Exchange, P.O. Box 10010, Austin, Texas 78766-1010

PAST ISSUES OF QUARTERLY Address inquiries about availability to the AGS Quarterly Librarian, P.O. Box 10010, Austin, Texas 78766-1010. Past copies are \$3, if available.

CHECKS AND BILLS, MEMBERSHIP INQUIRIES, GENERAL CORRESPONDENCE Send membership inquiries and dues, seminar registrations, orders for special publications, memorial gifts, other financial matters and general correspondence to AGS, P.O. Box 10010, Austin, Texas 78766-1010.

AGS QUARTERLY STATEMENT

Contributors to the AGS Quarterly are responsible for accuracy and adherence to copyright requirements. AGS assumes no responsibility for content of submitted material. It is the intent of AGS to avoid publishing personal information that is considered private, to identify author ownership for copyright purposes and to publish accurate information through direct verification, identification of information source or author's declaration. Submissions may be distributed in electronic format. Contents are copyrighted by AGS unless indicated as author copyright.

Submissions to the AGS Quarterly are always welcome
See inside back cover for additional AGS information



AUSTIN GENEALOGICAL SOCIETY QUARTERLY

Volume 49, Number 3/4

December 2008

TABLE OF CONTENTS

Editor's Message	101
Early 2009 AGS Calendar of Events	103
Creedmoor Community Cemetery	104
Papa was a Preacher... and his papa was one too	106
Austin Graded School	108
Genealogical Proof Standard	111
Index to Travis County Marriage Books, Volume 1 (1840-1857), Groom Surnames A-N.....	115
Narrative: Obituaries	124
Sorting out the Dallas Family Connections	126
1872 Austin City Directory, Surnames A-C.....	130
The Two Families of Robert W. TEMPLETON	141
International Genealogical Symbols.....	147

Editor's Message

Randy W. Whited

I recently read an editorial on the economy's effect on various industries. Second on the list of recession-proof markets (after gas stations...) was the hobby business. The belief is that people look for comfort in pocket-book friendly pursuits and keep their money and time close to home.

That bit of information gave me pause to think of the similarities with genealogy societies and like efforts. In this age of 'pajama-genealogy' and tight budgets, what does a local society have to offer its membership? A brief review of the contents of this Quarterly provides a cursory enumeration.

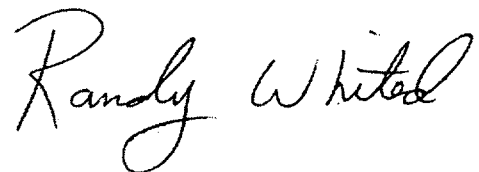
In 2009 AGS will host more than sixteen hours of quality, informative lectures and presentations, not including an excellent lineup for our annual seminar in May. Our twice-annual education classes resume this spring with a revamped curriculum and new instructors. A more hands-on service also starts this spring with Saturday Potpourri, a combination of mini-lectures and guidance/education segments.

The Society is also a focal point for volunteer efforts and personal development. The Travis County Cemetery Transcriptions project is still going strong. Nancy Hickman's Creedmoor Community Cemetery transcription found on page 105 is a recent example. In a similar vein, one can find the first segment of Robert Sage's excellent work in providing a listing of early Travis County marriages on page 116.

As always, I would like to stress that the Quarterly is the membership journal for your Society. All membership contributions are welcomed and encouraged without concern as to geographical location.

Whatever your talents, interests or background, AGS has a lot to offer in 2009 and beyond. By the time you receive this final issue of 2008, it will likely be early January. In the regard, please accept a belated Happy Holidays and have a prosperous New Year.

Sincerely,

A handwritten signature in cursive script that reads "Randy W. Whited". The signature is written in black ink and is positioned to the right of the "Sincerely," text.

Early 2009 AGS Calendar of Events

27 January, 7pm

AGS Monthly Meeting, Highland Park Baptist Church, 5206 Balcones Drive
"Social Relations in Late Colonial Texas" by Dr. J. F. de la Teja, State Historian of Texas

7 February, 9:30am-12:30pm

AGS Saturday Series, Highland Park Baptist Church, 5206 Balcones Drive
"Intro to Footnote.com," "Scanning and Preserving Family Photos," and "Automated Search Tools" by guest speaker Beau Sharbrough

21 February, 9am-12pm

AGS Beginner Classes, Location TBA

24 February, 7pm

AGS Monthly Meeting, Highland Park Baptist Church, 5206 Balcones Drive
"Researching U.S. Ships' Passenger Lists," by Karen Matheson

28 February, 9am-12pm

AGS Beginner Classes, Location TBA

24 March, 7pm

AGS Monthly Meeting, Highland Park Baptist Church, 5206 Balcones Drive
"Land Records, More Than Deeds," by Ed Dorroh

28 March, 10:00am – 12:45pm

AGS Genealogical Potpourri, Hampton Branch Library, 5125 Convict Hill Road

4 April, 9am-12pm

AGS Mini-Seminar, Highland Park Baptist Church, 5206 Balcones Drive
"Religion on the Frontier," by Russell Baker, Arkansas State Archives

25 April, 10:00am – 12:45pm

AGS Genealogical Potpourri, Austin History Center, 810 Guadalupe

NOTE: No AGS Monthly Meeting in April

2 May, 8:30am – 3:00pm

AGS Annual Seminar, St. David's Episcopal Church, 304 East 7th Street
Guest Speakers: Rick and Pam Sayre

Most events are open and free to the public. The Beginner classes and Annual seminar do require a fee and advance registration is recommended.

Creedmoor Community Cemetery

Transcribed by Nancy Hickman

As part of AGS' ongoing inventory of Travis County cemeteries, Creedmoor Community Cemetery was surveyed on 14 August 2008 by Nancy Hickman. The cemetery is located at 6000 Old Lockhart Road, just south of Creedmoor. Additional information, as well as photos of each of the plots, can be found on the AGS Cemetery Project web page at www.austintxgensoc.org/cemeteries.



Name of deceased	Date of birth	Date of death	Markings
Alfred Parrish		Feb 16, 1920	Husband
Grace	Feb 13, 1870	Sep 10, 1908	wife of
Jewel A.	1904	1914	Oct 11, 1901 Nov 20, 1914
Carrie Parrish		Aug 12, 1906	Wife of Alfred Parrish, born in Kent Co. England
Marin R. Gregor	Jan 13, 1921	Sep 12, 2005	
James, E. Young, Jr	Nov 29, 1930	May 28, 1997	TSGT U S Air Force Vietnam
Jerry Ray Vail	Aug 25, 1958	Mar 27, 1988	
Jerry Vail Jr	Oct 25, 1926	Apr 3, 1992	MSGT U S Air Force Korea and Vietnam
Alice E. Griffith	Dec 16, 1915	Jun 20, 1966	
Infant Son Wright	Aug 2, 1913	Aug 3, 1916	
Albert G. Wright	Feb 27, 1890	Feb 25, 1970	shares stone with Jennie
Jennie Wright	Jun 6, 1894	Oct 21, 1973	shares stone with Albert

Mary Steussy Gray	Mar 16, 1902	Mar 27, 1975	
Stella Hannah Steussy	Feb 27, 1878	Dec 30, 1946	
Charles T. Steussy	Feb 17, 1869	Jul 22, 1926	
Charles Steussy	Sep 12, 1890	Mar 1, 1919	
Gladys G. Caldwell	Sep 11, 1914	Mar 19, 1945	
Thomas Joseph Aiton		Mar 24, 1902	aged 42 yrs, 5 mos and 23 ds
Mary H. Aiton	Jul 17, 1834	Apr 9, 1911	
Thomas Aiton	(born 1881)	Feb 14, 190x	77 yrs, 6 ms, 3 days
Joseph Hardin Aiton		Feb 25, 1896	
Infant Johnson	Feb 22, 1897	Feb 23,	son of Charles & Tillie Johnson
William Edward Caldwell	May 8, 1865	Jan 2, 1957	
Susannah Agnes Caldwell	Nov 20, 1870	Mar 24, 1949	
John Wallace Caldwell	Feb 13, 1905	Mar 17, 1963	
Agnes E. (Bettie) Miller	Nov 12, 1902	Feb 27, 1969	
Thomas Edward Caldwell	Dec 24, 1897	Apr 2, 1969	shares stone with Annie
Annie Johnson Caldwell	Jan 11, 1899	Oct 22, 1993	shares stone with Thomas (also Cook Waldon FHM)
Conway Gene Caldwell	1934	1986	
Carroll Edward Caldwell	1933	2003	shares stone with Bettie
Bettie Christine Caldwell	1937		shares stone with Carroll
Leona M. Farmer	Aug 28, 1925	Dec 20, 1989	shares stone with Leroy
Leroy B. Farmer	Jul 20, 1924		
Paul Garcia	1961	2005 or 2008	metal FHM
Fred Garcia	Apr 2, 1927	Jul 11, 2000	shares stone with Ruth (Harrell FHM 1927-2000)
Ruth P. Garcia	Apr 16, 1927	Jul 3, 1998	shares stone with Fred (Harrell FHM Ruth Pearl Garcia)
Tracy Steussy	Sep 12, 1890	Mar 1, 1918	Son of H. C. & M. A Steussy
Wilbert Roy Benner	Nov 4, 1917	2000??	PFC U S Army World War x (FMH 1914-200x)
Mary Inez Benner	1928	Feb 19, 2005	U S Army Korea
Crystal Gail Pfouts	1978	2006	metal Harrell FHM
Martha Ann Lankford	1843	1910	



Papa was a Preacher... and his papa was one too

Carolyn Roth Spillers, AGS Member

Dundenheim, Baden, Germany is grape growing country in the southeastern part of the country, and about 8 miles north of Kehl which lies across the river from Strausberg, France. My grandfather, Karl Roth was born in Dundenheim in 1869. He joined the army but was released after 3 weeks. We never knew why, but have a photo of him in his uniform.

Karl was the youngest son of Johann Jacob Roth Jr. born 1816 and Catharina Huck born 1832. Eight children were born to this family: Johann Jacob, born 1860; Johann Michael, born 1862; Georg Friedrich, born 1863; Gottlieb, born 1865; Katharina, born 1866; Karolina, born 1867; Karl, born 1869 and a baby girl stillborn in 1872. Karolina died as an infant.



The German immigration into Texas that started about 1851 brought a lot of Lutherans into the area, especially Fredericksburg, New Braunfels and South

Texas. When the letters home to Germany expressed the need for pastors and a religious community, St. Chrischona in Basel, Switzerland added classes to prepare young men as pastors. My grandfather was one of 121 young men who came to Texas as pastors to answer the call of the rural communities. This group arrived singly or sometimes in groups of an entire class over a period of about 45 years.

After four years at St. Chrischona, Pastor Karl Roth arrived on Ellis Island, September 17, 1895, and from there came to Texas arriving in Galveston. We have a letter he wrote while still aboard the steamship EMS the day before he arrived. Once in Texas, he went to Brenham where he met with the President of the Texas Synod, the Reverend A. H. Falkenberg. He was sent to Bushdale, a small community in South Texas. In April 1896, he went back to Galveston to meet Elizabeth Gerber when she arrived. They went to Brenham where they were married by Pastor G. Langner on April 6th. We have no family history as to when or where they met. Elizabeth often remarked that she got so seasick on her trip, she wanted to die.

Elizabeth was born in 1866 in Kehl, the oldest daughter of Johann Gerber born 1834 and Elizabeth Keller born 1838. Her six sisters all stayed in Germany. Prior to coming to America, Elizabeth was a Home Economics teacher and later taught fine needlework in the Hoheren Tochter Schul for more "advanced daughters" in Karlsruhe, Germany for eight years. We

have samples of her needlework, some of which are dated 1883.

Their first son was born in Bushdale, Milam County in 1898. He was named Theophil John, but was always called T.J. In 1901, Carl Nathaniel was born. Both young men followed their father into the ministry. Because the family could not afford both sons in college at the same time, my father, Carl N. took a test, passed and taught school for a year in 1918 at the age of 17. He chose to teach the younger grades because the higher grades had young men who were friends and close to the same age.

Pastor Karl Roth served parishes in Bushdale, Sublime, Bushdale (a second time), Shive-Pottsville, and his final parish, Charlottenburg from 1929 to 1934 where he died. He was a talented young man evidenced by the altar he carved for the church in Sublime which has a Historical Marker.

About 20 years ago, my sister Johanna Roth Lange and my parents made a trip to visit the old church only to find it gone. Researching historical documents and notations, and from conversations with local residents, she found the church in Charlottenburg had closed in 1948, the congregation merged with a congregation in Shiner and the building sold. It was disappointing and heartbreaking.

In the fall of 2005, she learned where the building had been moved. She was determined to find the church her grandfather had served. Sold and moved several times, it now rests about a mile from the original location, but when she

and her husband got there, it looked like a big barn with storage sheds attached.

The building which had been stripped of the tower and narthex, boarded up in tin and plywood just didn't look like a church. However, once inside, it still felt like a church. It was inspiring and she has said, "It talked to me." They discovered the original paint applied in 1890, if faded and worn, was still visible in places including the hand painted scroll work along the wainscoting. The stained glass windows had been boarded up, protected and preserved in their original frames. Some still had the original shutters.

The balcony with two flights of stairs was still intact and there was a hole in the ceiling for the bell rope.

Johanna had been in charge of the gardens at the Texas Agriculture Education and Heritage Center north of Seguin, and they were looking for a historical church to add to the buildings they were collecting for a pioneer village. That was when Johanna suggested Zion Lutheran Church of Charlottenburg as a possibility. This was an opportunity to honor our grandfather as well as the other pioneer pastors who came to Texas. Eleven of these early pastors served the congregation in Charlottenburg. The down payment has been made and fund-raising begun to relocate the church to Seguin and eventually restore it to its former use.

Our sincere hope is that descendants of former members will share their memories, mementoes and financial assistance to this effort to honor a vital part of Texas History.

Austin Graded School

Compiled by Kay Boyd, AGS Board Member

AUSTIN GRADED SCHOOL Its Operation and Other Items of Interest Concerning it.

It has been the pleasure of a STATESMAN reporter to make a thorough visitation within the walls of the Austin graded school building. It was opened for scholars on Monday, the second of October, and on yesterday over two hundred pupils had been enrolled in all the grades, and the number will increase from week to week until its capacity is fully attained. The idea of establishing a graded school and erecting a building therefor is probably to be attributed more to Mr. S. G. Sneed than any other man in the community. Major C. R. Johns, Mr. S. G. Sneed and Mr. Joe Harrell, the faithful trustees of the public fund which has been created for its establishment, and who, as a board of directors, set on foot and accomplished this good work for Austin, should be held in grateful remembrance by the community. These men were its originators, and they now have associated with them a most worthy set of gentlemen to carry out the working of the institution. The present

BOARD OF DIRECTORS

are C. R. Johns, president; Walter Tips, vice president; D. W. C. Baker, secretary; S. G. Sneed, treasurer; Jos. Harrell, N. G. Shelley, T. D. Wooten, B. Melasky, E. Christian, C. S. West, J. H. Robinson, Sr., R. H. Lowry, and these names are a guarantee within themselves that nothing will be left undone which may tend to add to the merits of this splendid institution. It is one of those things which must grow as the years increase, and we predict that this is but the commencement of an era which will produce men and women, even here in Austin, ready for the severest conflicts of life. They will grow up here and be

educated here; they will love home, and Austin's greatness, it may be expected, will be their aim and their pride.

THE SUPERINTENDENT

Mr. D. W. C. Baker has been elected, on the part of the directory, superintendent of the Austin graded school, and the selection of this gentleman gives double assurance that the institution will be well conducted. Mr. Baker has had much experience in superintending and conducting school, and is just the man who will take great interest in making the school a success. He is now looking especially into the grading of the school, and is instituting such rules and regulations for its management as will make it a model in every respect.

THE BUILDING

is located on Rio Grande street, five squares west of Capitol Square, and occupies a commanding position upon intermediate ground. From its windows, and more perfectly from its roof, is visible some of the grandest scenery encircling Austin, while about its halls and corridors play in freedom and purity the balmy breeze from the Gulf of Mexico. The building is admirably constructed for its purposes, sixty feet from front with a depth of eighty-six feet give it ample room, and while all parts of it can be made close and comfortable in the coldest weather, it is so ventilated as to be pleasant during even the warmest seasons. Its main entrance is upon Rio Grande street, facing to the east. An ample portal admits you to a large and airy hall upon each side of which there are two class rooms admirably arranged with modern school appliances. The second story rises above a basement which will be described hereafter. Out at the west end of the second story hall is another wide portal from which descends a broad pair of stairs to the sloping hillside,

where are scattered clumps of native oaks, and other trees. In the valley just beyond this winds Shoal Creek and out upon the elevated plateau beyond stands the massive turreted walls of the Texas Military Institute. For beauty and even sublimity of location no spot could have been selected surpassing that upon which stands this school edifice. But we are writing of its construction. Two tasteful flights of stairs ascend to the second story, one from the front and the other from the rear entrance. The second story is an exact plan of the one below, and above this rises a mansard roof, in which are located large water tanks. The basement is divided into four compartments. Those in front are to be held as a reserve for schoolrooms, while the two in the rear and the wood rooms, in which are also located the furnaces for heating the entire building. Hot air conductors penetrate every room, and each one is supplied with both hot and cold air registers. The Austin City Water Works Company have laid one of the mains to the building, and supply pipes penetrate every part of it. We almost forgot to mention the little apartments formed out of the east and west ends of the hall of the third story. The one in front is the superintendent's room, while that one looking to the west is the janitor's, whose duty it is to remain in the building at all times as a sort of housekeeper.

CAPACITY

The eight class rooms will each accommodate sixty pupils, making a capacity on the second and third stories for 480 scholars. The basement story stand up well above the ground, and the two front rooms will, if it be required, five room for 120 pupils more, making a complete capacity for 600. The school rooms are of uniform size, twenty by thirty-eight feet, and the halls are twenty by eighty-six feet. The figures show that space and comfort have been taken properly into consideration.

THE CLASS ROOMS

The female scholars occupy the first story, the males the second. There are four class rooms on each floor, with accommodations for sixty scholars in each

room. There rooms are well ventilated and especially comfortable, and are supplied with the most approved modern school furniture. There are thirty desks in every department, and room at each desk for two scholars to remain comfortably seated. A new contrivance in the way of a patent slating laid upon the walls, between the window frames, answers the purpose of blackboards with admirable fitness. One teacher presides in each room, and the teacher's desk and chair is located in a corner of the entrance side of the apartment, and at a glance there can made a thorough survey of the room and scholars.

GRADES, TEACHERS AND CLASSES

Both the male and female departments are divided into four grades, each grade into two divisions, and every grade is assigned a separate room.

The first division of the first grade is assigned a course of study in articulation, spelling, reading, writing and oral drills in geography and arithmetic, with Miss Ciara Burnham as principal of the male, and Mrs. Georgia Donnan of the female department. The second division of the grade carries the young mind farther into these elementary studies.

In the second grade, first and second division, are taught reading, writing, spelling, elementary geography, arithmetic and composition; principal in male department, Mrs. M. F. Smith; in female, Mrs. Anna M. Stewart.

In the third grade are taught the previously named studies in more advanced form, together with geology, English grammar, comprehensive and physical geography, chemistry and Latin, with Miss Gertrude Bacon as principal in the female and Miss Fannie Campbell in the male department.

The fourth grade embraces a course of study in elocution, English grammar, composition, rhetoric, English literature, natural philosophy, arithmetic, algebra, Latin, astronomy, physiology and hygiene, geometry, mental philosophy and science of government. The principals in this grade are, of the female department, Mrs. R. W. Lowry, and of the male, Mr. W. H. Russel.

TUITION FEES

The rates to be charged for tuition are placed very low: First grade, per month, \$1.50; second grade, \$2; third grade \$2.50; fourth grade, \$3, placing it within the power of every one to obtain a good education at home.

DIVISION OF THE SEXES

The second story is used as the female department, the third for the male. There is a complete division of the sexes in the schoolrooms, and during recreations the pupils of each grade will remain under special charge of its teacher. It is acknowledged, however, that a wholesome admixture of the sexes conduces good manners and neatness, and they will be occasionally brought together at recitations and lectures with this object in view. The meeting of the sexes will be sufficiently rare to simulate the classes to proficiency in the presence of each other.

MISCELLANEOUS

Lectures will be an important feature in the course of instruction. Gen. N. G. Shelley will be heard upon the science of government, Pro. A. Goldmann will lecture on the demonstrate chemistry; Dr. J. W. McLaughlin will tell the young people a part of what he knows about physiology and hygiene, while Prof S. G. Sneed will talk to them about the earth's construction and of the wonders of the heavens. The institution is supplied with chemical and philosophical apparatus, and the demonstrations connected with some of these lecture will be highly interesting. Instructions in music may be taken up in the future.

We will say more of the Austin graded school and its conduct at some other time.

- Above from October 12, 1876,
Weekly Democratic Statesman

Texas' Oldest School To Host 2nd Alumni Celebration

The oldest public school in the State of Texas — Austin's Pease Elementary located at 1106 Rio Grande Street — will welcome former students in a 2nd Annual Alumni Celebration at 5:30 p.m. on Tuesday, March 5.

Pease Elementary stands on land first chartered by Austin founders for a school in 1839. As the growing community and new Texas Constitution called for public schools to be available to all children, Pease opened its doors to 200 students on October 2, 1876. The school's role in the history of Austin and the State of Texas was formally recognized when it was awarded a State Historical Marker in 1971.

The school has also borne several names. Originally the Austin Graded School, Pease became the West Austin Ward School in 1881, and, in 1902, was renamed again in honor of former Governor E. M. Pease, a strong advocate for public education.

By 1916, enrollment reached 800 students and additional classrooms were added to the school's face on Rio Grande, creating its current appearance. Later renovations brought indoor plumbing, a cafeteria, auditorium, heating, more classrooms, a child care center, and, in 1999, a gymnasium.

- AISD News Release,
February 28, 2002

Genealogical Proof Standard

Harold Hudnall, AGS Member

Whether you call it Genealogy, Family History, or just searching for your roots, we all have embarked on a journey to find out who we are and where we came from. The journey starts easily enough; that is if we start with ourselves, as we are told to do by the professionals. We know when and where we were born, when and to whom we married (and possibly divorced) and have documents to prove it. Usually we have the same for our parents and sometimes our siblings, including death certificates if they have passed away.

However as we go farther back in time those documents become more scarce. So how do we prove that someone is our ancestor? In the past, the recommended practice was called the “preponderance of evidence.” In Civil Law, the side with the heaviest evidence, i.e., a “preponderance of evidence” usually wins the case. This minimal measure of evidence is no longer considered adequate for genealogical proof.

The “Genealogical Proof Standard” (GPS) is now the accepted standard necessary to build a solid case. We can apply the measure when there is no direct evidence of an event.

What is the GPS? It is a five-step process as set forth in the Board for Certification’s “*BCG Genealogical Standards Manual*.” Simply put, it holds that proof requires:

1. we conduct a reasonably exhaustive search for all information that is or may be pertinent to the identity, relationship, event, or situation in question;
2. we collect and include in our compilation a complete, accurate citation to the source or sources of each item of information we use;
3. we analyze and correlate the collected information to assess its quality of evidence;
4. we resolve any conflicts caused by items of evidence that contradict each other or are contrary to a proposed (hypothetical) solution to the question; and
5. we arrive at a soundly reasoned, coherently written conclusion.

Sources — Information — Evidence

Sources provide information from which we select evidence for analysis. Sources may be original or derivative. An original source is the first recording of an event. A derivative source is one that provides information that was transcribed, abstracted, summarized or duplicated from an original source.

Information considers the degree of personal involvement by the informant. A record is either primary or secondary information. It is primary if it was made at or near the time of the event by someone in a

position to know firsthand, or it was made in writing by an officer charged by law, cannon or by-laws with creating an accurate record. It may be made orally, in writing or even pictorially as in a painting or photograph. All other information must be considered as secondary.

Evidence evaluates the relevance of information and adequacy to answer the question. Direct evidence must be sufficient on its own to prove an event without the necessity of introducing other records.

Indirect evidence, or circumstantial evidence as it is sometimes called, requires the Elizabeth Shown Mills, in a lecture on the GPS, states that we need to use an **ACTION PLAN!**

- ✓ **A**ssess what you have.
- ✓ **C**omplete the research.
- ✓ **T**rust nobody!
- ✓ **I**ntegrate & correlate details.
- ✓ **O**utline a theory – then try to disprove it! If it survives...
- ✓ **N**ow, write a convincing argument.

Making the Assessment

Identify the problem precisely. What are we trying to prove?

Analyze the data and weigh the evidence.

- Are there other ways to interpret specific statements?
- How much weight does each “fact” earn, when measured by BCG’s Research Process Map?
- Where are weaknesses in our evidence? How can they be strengthened?
- What was the quality of research that produced this evidence?

Reappraise prior conclusions. Can we make other hypotheses from the same evidence?

Completing the Research

Identify all relevant records that have not been used yet.

- Not just those on microfilm, but all that

introduction of other information to prove an event.

exists!

- Not just those conveniently available, but all that exists!
- Not just those that are nicely indexed, but all that exists!
- Not just those in paper form, but also what is online!
- Not just databases, but also the actual records!
- Not just ordinary sources such as censuses or newspapers or NARA’s compiled service records, but tract books, estray books, and NARA’s military hospital records and daily post reports – for starters!

Make a work plan.

Do that work!

Now proceed with rest of Action Plan until case is adequately proved.

So how do I build a case?

Use original records whenever possible.

- A valid case cannot be built on defective evidence.

Do exhaustive research.

- We cannot make a reliable decision from part of the evidence. Overlooked records are time bombs waiting to explode our theories.

Gather every detail – and document it!

- All those details that seem trivial when we first encounter them may later mesh with

new evidence to provide clues or help prove a point.

Play Devil's Advocate.

- As a theory takes shape, we go back to the evidence and try to disprove that theory. We do additional research from an adversarial viewpoint. Not everyone will be awed by our conclusion – especially if it contradicts theirs! So let us anticipate arguments. We might even disprove our own theory in the process!

Write it up.

- We build a case on paper, step-by-step, with thorough documentation, so others can judge the completeness of our research and the quality of our conclusions. No one will just “take our word” for anything. Nor is it enough to just say we have “looked at everything and the

weight of the evidence shows . . .” We must present a convincing, written argument.

Publish the paper.

- This assures wider and more permanent distribution. Readers may have other data or viewpoints to contribute. Also, the published word has power! Conclusions accepted by journals of stature carry considerable credibility.

Do not trust this conclusion as the final word.

- It is never possible in genealogy to prove parentage, identity, or origins. We merely strive to reach logical and convincing conclusions through thorough research and sound analysis.

Mental Boosters

(Power Suggestions from Other Players)

Think like an INVESTOR:

Self-defeating habits to avoid at all costs:

- Short-term thinking
- Speculation
- Mental shortcuts
- Race for information
- Tainted objectivity
- Emotional potholes

Think like an INVESTIGATIVE JOURNALIST

- Feed your curiosity

Austin Genealogical Society Quarterly, 49 (3/4)

- Don't rely on second-hand information
- Get everything in writing
- Question “conventional wisdom”
- Don't count on finding the smoking gun!

Think like a PROFILER

- Study human nature
- Study the circumstances
- Know what's “normal” and what's “out of norm”

Think like an ARTIST

- Think abstractly

(There are no absolutes in genealogy!)

- Look for the characteristics that make up a person – not just a name
- Consider the setting as well as the central subject

Think like SHERLOCK

- Collect all of the facts
- Look beyond the obvious
- Be an independent thinker
- Consider the context
- Build a broad knowledge base

Think like a DOCTOR

- Diagnosis is a 3-stage process

(Get the history; do a complete exam; then analyze your findings and order tests)

- A pattern is not a diagnosis

(Patterns suggest possibilities; they do not identify the disease)

- Symptoms have to be considered in context

Think like a FARMER

- Rotate your crops or you will deplete your soil
- Fertilize your brain – do not just plant seeds and pull weeds
- Let the field lie fallow periodically

(When you are stuck, take a break from the problem.

While your brain is idling, it will subconsciously work on the solution.

CHALLENGE:

How many ways can you think of to apply these concepts to genealogy?

Bibliography

Christensen, Dr. Penelope. *How Do I Prove It?* Toronto, Ontario, Canada: Heritage Productions, 2000.

Mills, Elizabeth Shown. "Genealogical Problem Solving with the Genealogical Proof Standard. Fiftieth Anniversary Program Syllabus, Houston Genealogical Forum, 2008.

Rose, Christine. *Genealogical Proof Standard, Building a Solid Case*. San Jose, California, 2005.

Index to Travis County Marriage Books, Volume 1 (1840-1857), Groom Surnames A-N

Robert Sage, AGS Board Member, compiled from materials at Texas State Library and Archives and Austin History Center

Groom	Bride	Date	Minister	Page	Book
Adam, John	Swenstone, Sofie	August 22, 1856	H W South	261	1
Adkins, Owen	Clements, Cinderilla	December 24, 1850	John B Costa	80	1
Akin, Hudson	Jones, Nancy C	March 22, 1853	L S Friend	145	1
Allen, William W	Clements, Mary C	July 22, 1850	Leander Brown	73	1
Alvis, James A	Tatum, Maria Emeline	November 26, 1856	H W South	269	1
Anderson, Amos F	Green, Caroline	December 14, 1851	Wm A Smith	98	1
Aquitera, Francisco	Juartuche, Marina	November 6, 1854	J M Odin	186	1
Armstrong, James	Finnin, Cordelia	September 11, 1856	John B Costa	258	1
Axman, Charles	Ey, Etta	March 26, 1855	Chas L Mann	213	1
Babcock, Lewis D	Livingston, Mary S	January 9, 1852	Alfred Caldwell	100	1
Bacon, Thomas	Harrell, Martha E	July 24, 1847	Peter Kerr	28	1
Bailetti, F S Adolph	Birnstiel, Malvine	December 17, 1856	J T Graves	271	1
Baker, H N	Glover, Susan	January 26, 1856	Albert Brown	232	1
Baker, Jirah D	Shelp, Louisa	April 6, 1854	Albert Brown	163	1
Baker, S W	Smyth, Jane	December 4, 1856	Wm M Baker	270	1
Banning, John P	Soles, Rebecca	December 19, 1846	Wm J Hotchkiss	22	1
Bargsley, John	Arrington, Sarah Lucretia	July 31, 1856	J T Graves	251	1
Barnard, Levi M	Hopkins, Mary	January 14, 1852	Alfred Caldwell	104	1
Barnhart, Joseph	Smith, Mary E	March 18, 1870	A J Adkisson	7	1
Barr, John	Courtney, Isabella	December 25, 1848	Geo Rottenstein	53	1
Beardsley, L	Freestone, Melissa	May 9, 1856	Geo S Walton	241	1
Beardsley, Lewis	Freestone, Racheal	May 12, 1850	Leander Brown	71	1
Beck, Truman	Giles, Elizabeth A	November 25, 1852	John B Costa	127	1
Bedford, George W P	Dancer, Maria C	January 28, 1851	J L Holiday	82	1
Bell, William	Shields, Mary Ann	August 18, 1842	D Laughlin	12	1
Beneger, H C	Rissman, Mary	January 3, 1856	J T Graves	227	1
Bennett, Hiram	Jones, Nancy Ann	April 3, 1851	James L Holliday	85	1

Berry, E S	Jennings, Sarah A	Dec 5, 1855	J H Ziveley	226	1
Biddle, Randall	Wilhope, Louisa (Stanhope)	April 8, 1850	Leander Brown	70	1
Binford, R A	Rowe, Josephine	May 22, 1855	John H Zivley	199	1
Birk, Samuel P	Gilleland, Rebecca A	February 15, 1843	Noah Smithwick	14	1
Bishop, Josiah	Sherman, Lucy H	November 30, 1853	John W Phillips	162	1
Bishop, Stephen F	Bryce, Susan	May 21, 1855	Wm M Baker	202	1
Blair, James	West, Mary N	February 25, 1857	Edw Fontaine	276	1
Bledsoe, Joseph	Sneed, Miranda	March 25, 1857	John B Costa	277	1
Blessing, Henry	Tetar, Susan	February 24, 1845	John M Long	46	1
Bonner, Ewen F	Baker, Sarah A	September 1, 1852	S B Cameron	128	1
Bonner, James W	Baker, Martha E	October 5, 1853	Wm M Baker	153	1
Bonner, William	Beck, Elizabeth	December 21, 1849	Alfred Caldwell	61	1
Booth, DeWitt C	Boyce, Malvina A	January 26, 1854	John W Phillips	160	1
Bostick, Taliaferro	Moody, Mary	July 5, 1849	Thos A Lancaster	143	1
Bowen, John W	Awalt, Elizabeth	February 8, 1855	Albert Brown	196	1
Bowles, William	Pfleger, Catherine	August 15, 1852	John B Costa	120	1
Boyce, Richard A	Manor, Ann Elizabeth	December 30, 1848	L S Friend	43	1
Bozeth, William	Smith, Elizabeth	July 26, 1851	John B Costa	87	1
Bradford, Adam	Chapman, Ede Jane	December 14, 1851	J H Russell	98	1
Bradford, Joseph	Malone, Ann Eliza	October 27, 1854	E B Crisman	185	1
Braha (Braher?), Balser	Hersen, Elizabeth	September 12, 1850	John B Costa	75	1
Brandon, John	Hill, Mary M	February 15, 1853	Henry Thomas	135	1
Bratton, George	Walker, Amanda	February 21, 1847	Stephen Cummings	23	1
Bratton, William	Bratton, Amanda	August 14, 1852	John T Allan	119	1
Brewer, M C	McKenzie, Mary A	April 3, 1856	J T Graves	237	1
Briggs, Dr Henry T	Crosby Hannah Martha Revell	November 20, 1851	William Baker	97	1
Brite, John M	Duty, Amanda E	November 22, 1849	G W Scott	58	1
Britt, Thomas F	Ford, Sarah Ann	October 8, 1855	S W Atkinson	218	1
Broadway, Nicholas	Russell, Josephine	February 26, 1852	John B Costa	108	1
Brookshire, James	Scott, Jane	December 31, 1846	Wm J Hotchkiss	22	1
Brown, Albert	Glover, Jane	August 9, 1848	Collin Forbes	39	1
Brown, Elisha	Hornsby, Katy Ann	August 24, 1855	A Brown	214	1
Brown, Frank	McLemore, Georgiana A	January 1, 1856	J M Wesson	227	1
Brown, Sidney P	Smith, Caroline A	July 11, 1850	G G Baggerly	73	1
Brown, William	Edwards, Emily C	September 24, 1856	M T Caperton	274	1
Browne, James	Metz, Lucinda	April 12, 1855	Wm M Baker	201	1
Brownrigg, R T	Calhoun, Mary O	May 12, 1856	Wm M Baker	242	1

Bryan, M Austin	Lewis, Cora	November 3, 1856	John W Phillips	266	1
Buchman, Wm	Aynesworth, Sarah Jane	June 21, 1848	S Cummings	41	1
Burch, Ellison	Burnam, Sarah	September 6, 1853	Wm S Smith	150	1
Burdett, James A	Bowles, Augusta A	December 21, 1854	L S Friend	189	1
Burdett, Joel A	Fowler, Julia	September 18, 1854	E B Crisman	182	1
Burditt, Jesse F	Hornsby, Sarah Ann	November 15, 1848	C Forbes	42	1
Burleson, Aaron	Tannehill, Jane	May 15, 1856	R B Burleson	246	1
Burleson, John	Wallace, Mrs Mary Ann	November 10, 1851	S B Giles	93	1
Burnett, Wm C	McCarty, Mary Ann	May 13, 1849	Geo W Scott	55	1
Byrne, Miles	Smith, Mary	November 4, 1856	John B Costa	265	1
Calhoun, Perseus B	Jennings, Lizzie	June 20, 1855	John W Phillips	205	1
Campbell, Anderson	Spears, Rebecca	September 5, 1856	J Fry	257	1
Campbell, John E	Davidson, Lavina C	April 28, 1853	William Baker	140	1
Cannon, William R	Smith, Maria L	July 18, 1844	James M Long	17	1
Carleton, Robert A	Lee, Margaret J	October 10, 1854	John B Costa	184	1
Carr, William H	Finnin, Catherine G	April 7, 1853	Michael Sheehan	147	1
Carroll, John	Adams, Penicy Eury	September 26, 1850	Finis E Foster	76	1
Carter, Benjamin F	Rust, Louisa Oakley	March 13, 1856	Edw Fontaine	236	1
Cartmell, Thos P	Brown, Mary Louisa	January 6, 1853	B J Smith	135	1
Case, William	Vann, Repsy	September 11, 1851	John B Costa	90	1
Casner, James W	Foster, Sarah A	February 24, 1848	Peter Kerr	31	1
Cassidey, John	Hollan, Margaret	September 14, 1856	J B Naghten	260	1
Cassidy, Thomas	Cassidy, Sarah Jane	April 11, 1852	John B Costa	112	1
Chalmers, Alexander	Beale, Marcia P	February 15, 1854	Edw Fontaine	170	1
Chalmers, William L	Luckett, Mary Jane	September 10, 1856	Edw Fontaine	259	1
Chapman, Henry	Ferguson, Sarah Jane	February 12, 1856	John B Costa	234	1
Cherryholmes, Henry S	Stanley, Narcisa	May 6, 1852	Wesley Smith	114	1
Cimpelmen, George B	Matthews, Sarah Catherine	February 20, 1856	F E Smith	234	1
Clay, John	Moore, Rebecca Ann	February 29, 1856	Wesley Smith	235	1
Clements, Blount	George, Charlotte	February 6, 1851	John B Costa	84	1
Clements, William	George, Martha	June 12, 1851	John B Costa	86	1
Cleveland, Dr Chas Dexter	Duty, Mary Louisa	May 28, 1856	Wm M Baker	244	1
Collier, James A	Gregg, Rebecca M	June 22, 1854	John T Allan	179	1
Collins, Thos C	Wells, Clarisa	January 20, 1856	J M Wesson	230	1
Cook A H (Abner)	Logan, Mrs Eliza T	September 15, 1842	R E B Baylor	13	1
Cook, Frederick	Roid, Henrietta	November 20, 1856	Peter B Lowe	268	1
Cope, James P	Hall, Elizabeth P S	October 2, 1856	John B Costa	261	1

Copt, Louis	Bratton, Elizabeth	March 30, 1843	J W Whipple	15	1
Costley, John M	Washington, Fanny H	February 22, 1854	John B Costa	171	1
Cottingham, Alfred C	Gilliland, Sarah E	September 20, 1854	Wesley Smith	195	1
Cowling, Wm D	Warren, Adaline	March 26, 1857	Geo L Walton	278	1
Creuzbar, Robert	Kirk, Lydia R	January 1, 1852	Edw Fontaine	106	1
Crosby, Charles A	Cleveland, Ophelia D	June 20, 1855	Wm M Baker	205	1
Crosby, Josiah F	Bremond, Josephine	August 30, 1856	John B Costa	255	1
Cummings, Stephen	Rowe, Nancy G	May 27, 1847	Homer S Thrall	26	1
Cushney, Wm H	Brown, Lydia Jane	February 14, 1846	James M Long	50	1
Custard, William	Bell, Mary Ann	February 4, 1844	D Laughlin	46	1
Custard, William	Stanfield, Clarinda	May 22, 1855	J M Wesson	203	1
Dancy, Jon Winfield	Nowlin, Lucy Ann	October 25, 1849	William E Jones	58	1
Darter, Ephraim H	Cawfield, Rutha H	December 22, 1852	Henry Thomas	131	1
Davidson, Harvey	McCarthy, Elizabeth	January 30, 1850	Albert Brown	62	1
Davis, George A	Harrell, Mary Ann	April 13, 1848	W H Cushney	114	1
Davis, James S	Wilburn, Elizabeth E	July 8, 1852	Wesley Smith	139	1
Dean, Sandford S	Barber, Elizabeth N	August 10, 1856	John B Costa	253	1
Deats, George S	Horne, Mary E	December 31, 1851	Finis E Foster	100	1
Dechard, A H	Burditt, Martha S	November 27, 1856	E B Crisman	270	1
Dieterich, Francis	Browning, Sarah E	June 17, 1847	H S Thrall	27	1
Dignan, Dominick Thomas	Horne, Harriett	November 6, 1851	Finis E Foster	95	1
Dilcher, William	Claus, Lacetta	June 9, 1849	Thos Ward	45	1
Dixon, James	Wright, Mary Ann	February 24, 1853	Wesley Smith	137	1
Dodd, James S	Hopkin, Martha	January 14, 1852	Alfred Caldwell	103	1
Doerk, Leo Maurice	Buttery, Margaret	April 21, 1856	John B Costa	238	1
Doncher, Henrich	Zenner, Barbara	December 12, 1849	Thos Ward	62	1
Doxey, James D	Adams, Margaret J	January 20, 1857	E B Crisman	272	1
Driskill, Jonathan A	Williamson, Mary E	May 1, 1853	John W Phillips	140	1
Duce, M G	Baggett, Martha	May 15, 1856	Albert Brown	246	1
Duffau, Francis T	Davidson, Mary G	December 17, 1850	Wm M Baker	144	1
Durst, James H	Atwood, Josephine M	January 11, 1854	Wm M Baker	169	1
Edmiston, David C	Bowen, Rhoda B	July 3, 1856	A Brown	248	1
Edmiston, James E	Warren, Margaret Ann	June 3, 1846	No Return	52	1
Elliott, J B	Glascok, Ann E	August 25, 1855	R H Taliferro	210	1
Evans, Musgrove	Richardson, Catharine D	October 1, 1840	J W Smith	6	1
Farrer, Jacob	Brackeen, Caroline	January 9, 1850	Collin Forbes	64	1
Faxal, John	Raega, Ida C	January 29, 1854	John T Allen	159	1

Fellman, Leopold	Horst, Emma	February 12, 1857	John B Costa	275	1
Fink, Theodore	Lembert, Clementine	March 8, 1851	Edwd Fontaine	85	1
Fisk, Josiah	White, Narcissa L	August 10, 1848	L S Friend	39	1
Fleet, John	Martin, Kunigunde	January 10, 1852	John B Costa	101	1
Ford, Spencer	Shaw, Mary W	February 2, 1854	John R McCall	273	1
Frettwell, Jefferson	Gwinn, Mary C	July 25, 1852	Wm M Baker	118	1
Friend, C S	Woody, Elizabeth Miray	September 13, 1855	Chas L Mann	214	1
Gamble, Geo A	Duncan, Josephine	November 17, 1850	James E Ferguson	78	1
Gardner, John	Beno, Catherine	November 27, 1849	Thos Ward	59	1
Gardner, N A	Jones, Elizabeth A	April 7, 1857	A W Elledge	290	1
Garrett, Caleb	Puckett, Irenia	December 22, 1840	S J Whatley	5	1
Gault, Benjamin T	Rogers, Nancy Leonard	December 12, 1855	E B Crismann	225	1
George, William W	Edwards, Eliza J	September 24, 1851	John B Costa	89	1
Germany, Robert R	Burnam, Eliza J	March 24, 1853	Wm S Smith	145	1
Gilbreth, Jas P	Hall, Permelia	February 19, 1847	W H Cushney	25	1
Glascok, Thos	Browning, Mary PhiliAnn	May 29, 1844	Greenlief Fisk	16	1
Glass, Edward	Mauthe, Virginia	April 22, 1855	J J Laremore	199	1
Glass, R H	Rogers, Mrs H H	July 22, 1856	E B Crisman	250	1
Glasscock, Stephen C	Riggle, Jane E	September 28, 1856	R H Taliaferro	267	1
Glasscock, Thos W	Duncan, Eliza Jane	June 18, 1848	R H Taliaferro	36	1
Glover, Silas J	Campbell, Julia A	November 29, 1855	Albert Brown	223	1
Glover, Silas M	Campbell, Susan	November 20, 1850	Albert Brown	78	1
Goforth, James L	Gatlin, Amanda F	January 22, 1851	John B Costa	130	1
Green, John Alexander	West, Catharine Eccles	January 21, 1857	Charles Gillette	291	1
Green, Thomas	Chalmers, Mary Wallace	January 31, 1847	Homer S Thrall	23	1
Gregg, Jeremiah	Bratton, Margaret	October 12, 1850	J Minor	77	1
Griffin, Thomas	Cleveland, Martha M	January 4, 1854	Wm M Baker	157	1
Grooms, Alfred	Doxey, Elizabeth	November 15, 1850	G G Baggerly	79	1
Grooms, Horatia	Rust, Margaret E	December 20, 1854	Edw Fontaine	191	1
Grumbles, Benjamin	O'Connor, Isabella	July 22, 1851	Wm M Baker	88	1
Grumbles, John D	Kersinger, Eliza P	September 3, 1856	J H Zivley	266	1
Guilmett, Robertson W	Worrell, Mary J	October 26, 1853	Wm M Baker	154	1
Gurley, James M	Soules, Janes	September 18, 1851	John B Costa	90	1
Gwin, Davis	Moore, Ann	November 23, 1853	Wesley Smith	161	1
Hadley, William A	Bradford, Frances Ann	April 14, 1850	Thos Ward	70	1
Hadley, William A	Reiley, Delpha Ann	September 26, 1850	Jas E Ferguson	76	1
Hague, John W	Stone, Martha	December 19, 1849	Finis E Foster	61	1

Hamilton, Charles	Masterson, Martha	July 9, 1856	Albert Brown	248	1
Hammock, Brice	Piper, Susan H	November 2, 1854	Wm S Smith	185	1
Hancock, George	Lewis, Louisa	November 6, 1855	Edw Fontaine	221	1
Hancock, John	Richeson, Sue	November 12, 1855	Edw Fontaine	222	1
Hardiman, Wm N	Rogers, Mary Elizabeth	October 24, 1855	C B Crisman	220	1
Harris, Isaac	Pollack, Mary	November 6, 1851	J Miner	94	1
Harris, John	Lohmann, Franzisca Angenesia	July 19, 1847	S Cummings	37	1
Harris, Samuel	Rollins, Juliet A	April 19, 1855	J M Wesson	204	1
Harrison, Chas A	Eanes, Sarah Alice	September 4, 1856	John B Costa	257	1
Harrison, G H	McKinstry, Ann C	January 14, 1841	C Richardson	5	1
Haynie, Hugh H	Bremond, Marie Louisa	January 20, 1853	John B Costa	133	1
Haynie, Samuel G	Evans, Hannah Maria	February 7, 1841	A Hutchison	6	1
Hearn, John	Gamble, Maria S	April 26, 1854	Albert Brown	175	1
Heath, James R	James, Vienna H N	December 14, 1853	John T Allen	156	1
Hector, James P	Logan, Ann Eliza	May 25, 1845	John S Williams	49	1
Hemphill, Cornelius M	Snoddy, Elizabeth	April 14, 1845	James M Long	49	1
Henry, William	Legett, Laura A E	March 2, 1854	John B Costa	272	1
Herwig, Warren	Yager, Elizabeth	October 3, 1853	John T Allen	152	1
Hill, La'Fayette D	Duty, Sarah H	June 20, 1855	Thos F Hudson	206	1
Hill, Washington L	Hervey, Mrs Mary A	October 3, 1852	Edw Fontaine	125	1
Hofhientz, Henry	Hinemann, Christiana	February 11, 1855	Chas L Mann	174	1
Hofmann, Philip	Meyers, Katherine	December 25, 1851	John B Costa	99	1
Holden, Joshua	Cazenau, Mary Eiza	November 21, 1844	R L Feding	18	1
Holeman, Frederick	Ostmons, Mary	August 1, 1856	John B Costa	251	1
Holman, Hardy	Cook, Mrs E H	January 21, 1854	John R McCall	158	1
Holman, Joseph	Preece, Elizabeth Jane	September 2, 1852	John B Costa	124	1
Hopkins, C A	Brownrigg, Laura S	October 5, 1856	L S Friend	262	1
Hornberger, Jacob	Bengener, Doratha	December 6, 1855	John B Costa	224	1
Horne, James A	Gooch, Harriett	April 24, 1849	Finis E Foster	44	1
Hornsby, Joseph	Lane, Eliza Ann	June 19, 1850	L S Friend	72	1
Hotchkiss, William S	Puckett, Hannah B	September 8, 1841	A J Adkisson	8	1
Hotchkiss, William S	Wolfe, Mary E	April 11, 1854	John W Phillips	164	1
Houssoux, John	Watson, Sylvia	January 28, 1850	Thos Ward	65	1
Hughes, Thomas P	Doxey, Susan	November 25, 1856	H W South	268	1
Humphreys, Robert	Wansley, Maniza J	May 15, 1854	Wm S Smith	180	1
Hunt, Wesley	Bratton, Jane	December 20, 1840	Noah Turner Byars	3	1
Hutto, James E	Hughes, Margaret	September 6, 1849	G W Scott	57	1

Hyde, John C	Puckett, Hannah	June 19, 1840	D Laughlin	2	1
Inge, P S	Faust, F M	November 8, 1855	Albert Brown	221	1
Isom, J Fletcher	Burleson, Elizabeth	January 14, 1850	G W Scott	63	1
Jackson, John	Bradford, Susanah	January 11, 1852	J H Russell	103	1
James, Martin	Forbes, Mary	January 13, 1848	R H Taliaferro	30	1
Jeffradge, James	Jones, Selina	October 26, 1846	R C Doom	19	1
Johanson, Gustaf	Bjoerkman, Charlotta	February 3, 1855	Edw Fontaine	193	1
Johns, James	Morris, Martha	March 2, 1854	Joh T Allen	272	1
Johnson, Alexander	Barber, Martha M	February 24, 1852	S B Cameron	111	1
Johnson, Alexander G	Miller, Louiza Jane	May 7, 1840	John Haynie	1	1
Johnson, Benjamin F	Johnston, Lucy Ann	September 8, 1847	Henry Renick	29	1
Johnson, Solomon L	Bowles, Sophronia	January 19, 1842	R E B Baylor	11	1
Jones, Anson	McCory, Mrs Mary	May 17, 1840	J W Smith	1	1
Jones, Hiram L	Renick, Nancy D	August 4, 1852	Finis E Foster	118	1
Jones, James R	Smith, Mary E	February 4, 1857	John R McCall	273	1
Jones, John P	Mccutcheon, Mary Jane	January 14, 1857	Hiram M Burrows	271	1
Jonson, Johan	Donelson, Hadda	July 4, 1854	Edw Fontaine	180	1
Kane, Joseph A	Worldy, Virginia	July 22, 1855	John B Costa	208	1
Keenan, Charles G	Ward, Eliza Ann	March 21, 1848	Geo Rottenstine	33	1
Kelly, Francis	Cempney, Mary Ann	June 7, 1848	Stephen Cummings	35	1
King, Wm H	Wilson, Jane	November 28, 1849	Greenleaf Fisk	60	1
Kirchner, Christian	Burditt, Martha W	March 4, 1852	John R McCall	110	1
Knight, Lewis	Hoge, Mary	October 9, 1856	Wm S Smith	264	1
Kolb, Gottlieb(Gilbert)	Lohmann, Lovese	February 9, 1856	J T Graves	233	1
Krieger, Andreas	Theile, Augusta	March 24, 1855	Charles L Mann	196	1
Kuykendall, Mark Cooly	Boyce, Elvira	August 30, 1849	Alfred Caldwell	56	1
Land, N R	Lotta, Mary M	September 6, 1856	Empriam McDaniel	258	1
Lane, James H	Edmondson, Mary A	April 9, 1854	Henry Thomas	164	1
Lane, Richard N	Swisher, Annie	June 5, 1855	W M Baker	201	1
Lawrence, William	Davis, Mrs Ann	June 30, 1852	Wm M Baker	116	1
Leach, A D	Campbell, Martha Ann	Ocotber 7, 1856	J H Fry	263	1
Lee, Joseph	Grooms, Sarah	October 4, 1846	Homer S Thrall	19	1
Lee, Joseph	Ogle, sarah	January 5, 1852	Wm M Baker	102	1
Linaweaver, George	Colbrath, Elizabeth	March 1, 1848	Ulysses A Young	33	1
Lipscomb, Robert C	Cocks, Mary	January 23, 1854	Wm M Baker	158	1
Littlepage, Jas A	Knight, Martha E	September 10, 1856	Henry Thomas	259	1
Lohmann, John Henry	Meyer, Rosene Caroline Charlotte	July 19, 1848	Stephen Cummings	38	1

Long, James M	Johnson, Mary Ann	October 2, 1845	J C Tannehill	47	1
Lotta, James	Burrows, Malinda Ann(Milam Co)	September 19, 1847	Henry Renick	30	1
Lotta, James	Brown, Catherine	May 6, 1849	Collin Forbes	44	1
Love, Martin A	Edwards, Cerrindo	August 21, 1842	Richard Ellis	12	1
Lyon, Thomas S	Christian, Sarah S	August 19, 1852	Sterling Orgain	122	1
Lytle, Charles D	McDaniel, Sarah Agnes	February 11, 1850	James E Ferguson	67	1
Mabry, Seth	Quigley, Eliza E	August 15, 1855	Wm M Baker	210	1
Macnamara, Michael	Johnson, Laura	February 2, 1855	Michael Sheehan	197	1
Maguet, Jerome	Meyer, Susanna	August 9, 1856	John B Costa	252	1
Malone, George W	Manor, Susan E	September 17, 1855(Issued)	R H Taliaferro	217	1
Malone, James L	Pitts, Eliza P	March 14, 1850	Thos A Lancaster	68	1
Malone, Perry	Thompson, Allis	August 2, 1857	J W Caldwell	280	1
Manor, Joseph J	Forehand, Julia Ann	March 28, 1853	R H Taliaferro	137	1
Marshall, Alfred F	Newman, Octavia C	April 3, 1855	John W Phillips	200	1
Marshall, Wiley	Metz, Laura A E	November 13, 1851	John B Costa	96	1
Martin, James	Piper, Nancy	January 11, 1853	John B Costa	132	1
Martin, Samuel	Caldwell, Anna Elizabeth	June 25, 1849	George W Scott	45	1
Martin, Wm H	Rowe, Catherine	September 1, 1856	John B Costa	255	1
Matt, Joseph S	Bratton, Annette J	August 3, 1854	John T Allen	181	1
Matthews, James H	Perry, Louisa D	August 3, 1854	Wm M Baker	166	1
Matthews, John G	Caruthers, Leonora	October 23, 1855	Wm M Baker	219	1
Matthews, John H	Brackeen, Emeline	June 11, 1848	A N Hopkins	36	1
Mauthe, Raphael	Edwin, Mary	March 25, 1855	Chas L Mann	213	1
McAnelly, Robert D	Rowe, Sarah Jane	December 18, 1850	L S Friend	79	1
McCuiston, Elisha	Renard, Mrs Ellen	October 31, 1851	James L Holiday	96	1
McDermitt, Thos H	Smith, Deborah	February 1, 1847	W H Cushney	24	1
McDonald, Neal	Brown, Eliza	January 13, 1856	E B Crisman	230	1
McDonnell, Edward	Holdsworth, Rachael	February 19, 1853	Edw Fontaine	136	1
McDuff, John	Peyton, Canzada M	December 21, 1848	R H Taliaferro	129	1
McFadden, David	Harris, Salina	July 8, 1852	John B Costa	116	1
McFarland, George J	Butler, Cordelia Ann	April 18, 1850	Finis E Foster	69	1
McGuire, John	Zimmerman, Regina	July 8, 1849	Thos Ward	56	1
McIntosh, Saml	Edwards, Eliza	January 10, 1850	Collin Forbes	63	1
McIntyre, James B	Selkirk, Jane A	October 17, 1854	Michael Sheehan	183	1
McKean, Timothy	Bennett, Amanda C	April 3, 1853	John W Phillips	139	1
McLauren, Maltissa E	Gilliland, Mellisa D	October 18, 1854	Wesley Smith	197	1
McLaurin, Angus	Brooks, Elizabeth Jane	March 2, 1853	Robert Renick	146	1

Medlin, Hall	Bradford, Catherine	January 7, 1850	Collin Forbes	64	1
Medlin, Marion	Spencer, Elizabeth	October 16, 1852	R H Taliaferro	126	1
Meeks, James T	Stanley, Martha	June 22, 1854	Albert Brown	179	1
Meeks, Suddeth	Stanley, Adaline	July 15, 1851	Albert Brown	86	1
Miles, William P	Moore, Elizabeth J	December 22, 1852	Westley Smith	133	1
Miller, Godfrey	Abbott, Sarah	November 24, 1841	Noah Turner Byars	9	1
Miller, Hugh	Mays, Sarah	June 7, 1854	Wesley Smith	177	1
Miller, Thomas L	Miller, Francis A	January 19, 1855	Wesley Smith	207	1
Miller, William L	Joy, Purvine Permilea	August 11, 1850	Greenleaf Fisk	74	1
Millican, Elliott W	Triplett, Marcella E	February 17, 1850	L S Friend	67	1
Mills, Edward	Cottle, Fredonia Adaline	December 6, 1846	R C Doom	21	1
Miner, Joel	Tannihill, Cynthia B	June 2, 1845	James M Long	50	1
Minielle, Louis	Adkisson, Mary	November 30, 1846	R C Doom	20	1
Montgomery, R W	Casner, Cynthia	October 15, 1840	N T Byars	4	1
Montgomery, W C	Smith, E H	October 2, 1854	R H Taliaferro	183	1
Moore, Enoch	Forbes, Cynthia Jane	February 20, 1851	Finis E Foster	83	1
Moore, John	Daugherty, Margaret	October 19, 1851	Edw Fontaine	92	1
Moore, Martin	White, Elizabeth Ann	December 20, 1844	James M Long	17	1
Moore, Nathaniel	Puckett, Euceba	January 12, 1854	Wesley Smith	168	1
Moore, P A	Matthews, Martha M	October 20, 1853	Wm M Baker	154	1
Moore, Robert James	Burleson, Martha Jane	October 26, 1853	Wesley Smith	162	1
Moore, William H	Moore, Nancy C	Febraury 24, 1848	Peter Kerr	32	1
Morgan, Richard S	Sneed, Susan E	March 21, 1850	H S Lafferty	69	1
Morgan, Samuel	Wanslow, Susan	August 18, 1856	John B Costa	253	1
Morris, George W	Owens, Mrs Jane	May 20, 1861	Charles Gillette	104	1
Morrow, Alexander W	Kuykendall, Elvira	January 9, 1854	W C Dunlap	169	1
Moss, Conrad	Buckner, Maria Louisa	October 5, 1850	G B McCleskey	77	1
Mouson, Andrew	Johnson, Christiana	April 21, 1856	John B Costa	239	1
Mulky, John H	Jones, Susan E	September 15, 1853	John T Allen	152	1
Myers, Sebastian	Neher, Mary Ann	August 13, 1849	Thos Ward	129	1
Nash, Francis M	Duty, Martha Jane	April 21, 1847	Richard Ellis	26	1
Nebgen, Antone	Dietmir, Catherine Mary Ann	August 18, 1850	John B Costa	74	1
Needham, William	Brown, Betsy	September 7, 1856	M T Caperton	260	1
Nelson, John	Mousson, Johanna	March 15, 1856	Freeman Smalley	237	1
Nicholson, M Harris	Savoy, Harriett Elizabeth	December 9, 1840	C Richardsohn	2	1

Narrative: Obituaries

Richard Robertson, Member of AGS and Lifetime Learning Classes

It is my understanding that one or more members of the Memoirs Class years ago wrote their own obituaries. The purpose, of course, was to say what one thought should be said for posterity.

I have toyed with the idea of drafting my obituary but have not yet made a final decision.

In the genealogy world we are encouraged to give complete names of the deceased, the names and relationships of the descendants, and pertinent facts about education, employment, and activities in the community that would give a well-rounded view of the person. And a fine line needs to be drawn between bragging and informing.

I have a wonderful obituary of my maternal great grandmother, who died in 1917 at the age of 95. Of course she was living in the small town of Jacksonville, Texas, and in a different age. But the information in the obituary is so valuable to her descendants. Covering two and a half columns of the paper it included details about her birth, marriage, movement from Tennessee to Texas during the days of the Republic of Texas, and a small paragraph about each of her children. One of the interesting paragraphs of the obit said: "The history of Mrs Sory's life is one of unusual interest, and if we could today give a list of her descendants we feel sure the number would be near 200. In September 1897, nearly twenty years ago, Robt. L. March, a grand-son of deceased, compiled a list of her descendants, and at that date there were 97 living, including 8 children, 50 grand children and 39 great grand children. There

had then been only 11 deaths in the family, and this included one of Mrs. Sory's children, who died in infancy. The descendants now extend into the fifth generation."

Her son, my grandfather William Harris Sory, died six months later in August 1917. As a former Mayor of Jacksonville and active civic leader, he was given over three columns in his obituary. I learned a lot about him by reading this, including all of his business ventures, his leadership in uniting two local Presbyterian churches, and his passion for the temperance cause. Part of this topic said: "...many years ago he had the satisfaction of seeing the saloon driven from the borders of his home town and county...."

We often learn more about a person in death than we knew in life. An obituary often tells us something about a phase of the deceased person's life that someone else knew but we did not. And it brings diverse groups together who have one beloved person in common.

However, there is a lot of things different relating to obituaries today than there were in 1917. For one, the newspaper charges for printing them and the rates are not cheap. Secondly, the majority of obituaries I read have a picture of the deceased. This is good, depending upon the vintage of the photograph. I prefer a reasonably recent photo rather than a fifty year old version. Currently we seem to see a number of obituary pictures with the young shot and the current.

A third difference between now and 1917 is Identity Theft. This rash of thievery has now reached the obituary section of the paper. It has been reported that these thieves will take

vital information given in the obituary, somehow even get the social security number from the leads, and then assume the identity of the deceased with credit cards etc., running up considerable uncontested debt. We are now told that we should file a copy of our loved one's death certificate with the three credit reporting agencies and any financial institution the deceased dealt with.

So should I write my own obituary in advance? And if so, should I provide the details a good genealogist would. Or should I be so brief that there is just a glimpse for the public record? Or should our genealogical societies come up with some alternative to provide to family and friends?

I await recommendations.

PIONEER FAMILIES OF TRAVIS COUNTY

Austin Genealogical Society will issue a pioneer certificate to those who can prove their ancestors lived in Travis County, Texas, prior to the close of 1880. To qualify for the certificate, you must be a direct descendant of people who lived here on or before Dec. 31, 1880, proved with birth, death and marriage certificates; probate, census and military records; and obituaries and Bible records.

Applications for Pioneer Families of Travis County can be found at www.AusTxGenSoc.org or from Kay Dunlap Boyd, P.O. Box 10010, Austin, Texas 78766-1010.

Each application is \$20 and the certificates make nice gifts.

You do not have to be a Travis County resident or a member of Austin Genealogical Society - although membership in the society is another fine bargain at \$20 a year.

Sorting out the Dallas Family Connections

Marshaleigh Orr Bahan, AGS Member

The Dallas family of the Austin Colony has been a confusing project due to much unverified information which has been accepted, passed on and defended or ignored. Alarm bells start going off when one looks at the dates and charted information. Eventually the project was abandoned because the researcher lost interest in the family.

For some unknown reason, the project was revisited in July 2008. Accepted information is that the James Loraine Dallas family and friends came to Texas from Hopkinsville, Christian County, Kentucky in 1832 or 33. James Loraine Dallas was born in 1788 in Baltimore County, Maryland, moved to and married in Pittsburgh, Pennsylvania where several children were born. The family moved to Kentucky between 1818 and 1820. James Loraine Dallas died in 1835 in Washington County, Texas.

The review timing was good because new information is available online and a workable theory has evolved. This information may contribute to the family history of some early Texans. His son, Walter Riddle Dallas fought at the battle of San Jacinto and was a Texas Ranger; another son, James Loraine Dallas, a Republic of Texas Veteran and Texas Ranger, is buried in the Texas State Cemetery, in Austin, Texas. Some accounts report that the city of Dallas was named for one of these brothers who were sons of James Loraine and Elizabeth Reed (Reid) Dallas. Another son, Alexander James Dallas was prominent in Bell County, Texas.

The following is an outline of some basic, sourced, Dallas family data which was made to help determine who the parents of James Loraine Dallas were and what, if any, was his connection to George Mifflin Dallas, Vice President of the United States in 1844. It is followed by some conclusions and speculations. This is a work in progress and suggestions are welcome.

Generation One

George DALLAS of St Martins

(born 1634/35-buried 13 April 1701)

Margaret ABERCROMBIE

(buried 16 October 1697)

Children: 1. James of St Martins, 2. George, 3. George of Parkley, 4. John, 5. Margaret, 6. Janet

Generation Two

James DALLAS of St Martins

(bp. 16 June 1661- 10 November 1740)

1st married 19 February 1683

Elizabeth RIDDLE

Children: 1. George, 2. James, 3. Walter, 4. Isobel, 5. Elizabeth, 6. Jane, 7. Agnes, 8. Marion, 9. Anne, 10. Robina, 11. Katherine, 12. Janet

James DALLAS of St Martins

(see below)

2nd marriage

Barbara COCKBURN

Generation Three

Walter DALLAS married before 24 October 1732, Baltimore MD Chloe CROOK
(born c. 1704 -died before 25 August 1772) (born c. 5 October 1711)

Children: 1. *Nathan born c. 1734, alive in 1773; 2. Elizabeth Riddle born before December 1737; alive in 1756; 3. Chloe born before December 1737; alive in 1756; 4. Katherine; 5. Rachel, alive in 1773 6. Ann alive in 1773; 7. Sarah, alive in 1756; *8. Walter born after 1744

Barnes notes that Nathan had issue. Barnes lists Walter as a son of Walter Dallas but Walter was not on any other records listing children.

Generation Four

Chloe married 15 September 1764 to Thomas EAGLESTONE (Baltimore, MD)
Sarah m. 1st 18 August 1764 to Benjamin EAGLESTONE and 2nd to Nathaniel MARTIN (Baltimore, MD)

Walter Riddle DALLAS m. 7 March 1786 to Catherine CROOK in Baltimore, MD

* About 54 year time frame between the marriages of Walter and Chloe CROOK DALLAS and Walter Riddle and Catherine CROOK DALLAS.

Possible connections

DALLIS, Walter R. m. 5 March 1801 to HARMAN, Sarah in Baltimore, MD

DALLES, Cloe E. m. 8 January 1805 to ORAM, William Richards in Baltimore, MD

DALLAS, Priscilla m. 15 August 1811 to BROWN, Thomas S. in Baltimore, MD

DALLAS, Ann R. m. 15 June 1824 to TIBBITT, Joshua in Baltimore County, MD

It is possible and often reported but not proven that Walter Riddle and Catherine CROOK DALLAS were parents of James Loraine DALLAS.

Generation Five

James Loraine DALLAS married 19 August 1814 in Pittsburgh, PA (unverified) Elizabeth REED (REID)
(born 14 April 1788 in Baltimore, MD, died 9 July 1835 in Washington County, TX)

Children: 1. Martha, b. 1815 Pittsburgh, PA; 2. Walter Riddle, b. 1816 Pittsburgh, PA; 3. James Lorraine, b. 1818 Pittsburgh, PA; 4. Alexander James, b. 1820, Hopkinsville, KY; 5. Catherine C., b. 1822, Hopkinsville, KY; 6. William Andrew, 1825, Hopkinsville, KY; 7. Mary Ann, b. 1827 in Hopkinsville, KY; 8. Mary Elizabeth, b. 1829 Hopkinsville, KY; 9. Priscilla, b. 1831 Hopkinsville, KY; 10. John Pendleton, b. 1834 Independence, Washington Co., TX

Generation Two (from above)

James DALLAS of St Martins 2nd marriage Barbara COCKBURN

Children: 1. Robert, 2. Stewart, 3. Joseph, 4. William, 5. Agnes, 6. Barbara, 7. Christian, 8. Clementine, 9. Henrietta, 10. Mary, 11. Rachael, 12. Charlotte, 13. Susanna

Generation Three

Robert DALLAS, MD

married 17 Aug. 1736

Mary Francis MAIN

(lived Dallas Castle, Jamaica, died 23 April 1769)

Children: 1. Alexander, died young; 2. Robert, born 14 March 1739, died young; 3. Robert Charles; 4. Stuart George born 1756, died 1820; 5. Alexander James Dallas born 21 June 1759 Jamaica, died 16 January 1817 New Jersey.

Generation Four

Alexander James Dallas

married

Arabella M. Smith

Alexander James Dallas was appointed Secretary of the Treasury by President Madison in 1814.

Children: 1. Charles Alexander died young; 2. Robert died young; 3. Alexander James born 15 May 1791, married 8 January 1821 to Henrietta Constantia Meade; 4. **George Mifflin Dallas** born 10 July 1792, died 31 December 1864 in Philadelphia, PA. George Mifflin Dallas held various high offices and was elected Vice President of U. S. in 1844 with James Polk as President.

NOTES

James Loraine Dallas and George Mifflin Dallas were not brothers; George Mifflin Dallas' family is well documented and his only surviving brother was Alexander James Dallas, born 1791. James Loraine Dallas' sons were not nephews of George Mifflin Dallas as reported in unverified Texas histories. It is likely that James L. Dallas, Sr.'s great grandfather and George Mifflin Dallas' grandfather were sons of James Dallas of St Martin, Scotland by different mothers. This would make them half cousins once removed.

James Loraine Dallas could have been the son of Walter Riddle and Catherine Crook Dallas. Nothing more is known than the marriage date of 7 March 1786 in Baltimore, MD. Siblings could have been Priscilla, Sarah, and Cloe E. (Chloe).

Walter Dallas (husband of Chloe Crook) had died by August 1758.

This same Walter Dallas had two sons listed in records, Nathan and Keith. Nathan and his sisters, Ann, Rachel and Catherine Reid filed a suit against Alexander Dallas, silk dyer in Edinburgh, Scotland 21 July 1773. The other children (Clere probably Chloe, Sarah, Elizabeth,

Keith) are not named as plaintiffs and Catherine Reid had not been listed in 1756 suit against James Dallas by Walter, his children and Robert Dallas, surgeon in Jamaica, his half brother. Catherine Reid was probably Nathan's aunt who left him 1000 merks Scots in her will dated 25 August 1772. She died 15 January 1776.

Nathan Dallas could be the father of Walter Riddle Dallas but no records have been located.

Why was James Loraine Dallas in Pittsburgh, PA when his kinsmen lived in Philadelphia, PA?

Maryland Marriages and Deaths from the Maryland Gazette 1727-1839 has the announcement from a Philadelphia paper of 17 January 1817 that Dallas, Alex J. died early this morning after a short illness of 24 hours.

It appears likely that Catherine Crooke was the daughter of Joseph and Priscilla James Galloway Crook who were married 24 April 1757 in Baltimore, Maryland. Joseph Crook was the son of Charles Crook, the son of James Crook, brother of Chloe Crook wife of Walter Dallas. Priscilla's maiden name was James; she was widow of Salathiel Galloway.

SOURCES

Barnes, Robert W. Baltimore County Families, 1659-1759. Clearfield, 1996.

Barnes, Robert W. British Roots of Maryland Families. Baltimore, MD: Genealogical Publishing Co., 2002. pp. 149-159.

Coldham, Peter Wilson. Settlers of Maryland 1679-1783. Consolidated Edition, Baltimore: Genealogical Publishing Co., Inc. 2002. p. 163.

Dallas Family, Scot;US. Car-Del-Scribe: Vol. 14, No. 1, Jan. 1977.

Dallas, James. The History of the Family of Dallas and their Connections and Descendants from the Twelfth Century. Edinburgh: Print Priv. by T. and A. Constable Ltd. 1921.

Dobson, David, Directory of Scottish Settlers in North American, 1625-1825. Baltimore, MD: Genealogical Publishing Co. Volume 2, 1984. p. 39.

Dobson, David. The Original Scots Colonists of Early America, 1612-1783. Baltimore, MD: Genealogical Publishing Co., Inc., 1989. p. 69.

Dobson, David. Scottish-American Court Records 1733-1783. Baltimore, MD: Genealogical Publishing Co., 1991. p. 19.

Dobson, David. Scots on the Chesapeake, 1607-1830. Baltimore: Genealogical Publishing Co, 1992. p. 36.

Founders and Patriots of the Republic of Texas, Lineages of the Members of the Daughters of the Republic of Texas.

The Notebook of the Baltimore County Genealogical Society. June 1992, Volume VIII, no. 2, pp. 13-15.

Ray, Worth S. Austin Colony Pioneers. Austin and New York, 1970. The Pemberton Press.

Tyler, George W. The History of Bell County. San Antonio, TX: Naylor, 1936.

Various U. S. Censuses online at Ancestry.com

Texas State Cemetery, James Dallas entry (www.cemetery.state.tx.us/pub/user_form.asp?step=1&pers_id=117)

Dallas Historical Society: Topics in Dallas History (www.dallashistory.org/history/dallas/topics.htm)

San Jacinto Museum of History—Biographies (www.sanjacinto-museum.org)

Ancestry.com Database: Marriage Records of Baltimore County, Maryland, for the Period of 1823 to 1826

Ancestry.com Database: Musser and Allied Families: A Genealogical Study with Biographical Notes. pp 55-59

1872 Austin City Directory, Surnames A-C

Transcription by Kay Boyd, AGS Board Member

INTRODUCTORY

A complete Directory of Austin is herewith offered to the public. Our city has grown so extensive-the population so great, such a work has become almost indispensable. The incomplete efforts to compile a Directory, made by strangers, men not identified with Austin nor her interests, have somewhat served to impede us in our labor. Nevertheless, having undertaken the enterprise, the publishers determined to push it through to a successful issue; and we are gratified at the support that been extended to us by the thoughtful and considerate portion of the community.

... The city has been thoroughly canvassed-every home within the corporate limits has been visited, and every effort made to get the name, residence and occupation of the head of families and citizens generally. In spite, however, of all the precautions taken, a few errors and omissions, doubtless, have occurred. Through the inexplicable motive of some who refuse to give the required information, the perversity of others who intentionally or innocently mislead the canvassers, and the difficulty of spelling proper names as pronounced by some of our foreign born citizens, it cannot be wondered at if an occasional error or omission is detected.

... It was the intention of the publishers to have given a complete and full census of Austin, ...The Directory contains about fourteen hundred names, and as six

inhabitants for every single name is considered a low estimate, it can be assumed that the total population of Austin amounts to about 8,500.

[The 1870 population of Austin was 4,428. "City Population History, 1850-2000." Texas Almanac, 2002-2003- AGS Editor]

It must not be forgotten, however, that this estimate does not include our large colored population, for, as a general thing, it has been found impossible to number them or fix their habitations. In many instances a single room or shanty is made to contain ten or more of them, large and small; and as they do not abide in any location for any great length of time, we have generally omitted the names of all except those who have a local habitation and occupation.

... We have endeavored to impress upon our citizens the necessity of informing us of any change they might make in location after our canvassers had visited them, but have not been materially assisted in this particular; if an error, therefore, should be discovered from failure to notify us of any change we disclaim all blame in the matter.

In the miscellaneous portions of the work, the Municipal, County and State officer have been published in such form as will be found quite useful for reference.

- Austin, Texas, September 15, 1872

Name	Occupation	Address
Abraham, E.	grocer	northeast corner Pecan st and East av
Abraham, A.	with E. Abraham, grocer	n e cor Pecan st and East av
Abrahams, Ph.	tobacco and fruit	Pecan st b Congress av and Brazos st
Adams, Charles	saloon keeper, Congress av near n e cor Ash st	res Colorado st b Mulberry and Ash sts.
Adams, Robert	quarryman	res n e cor Cypress and Nueces sts
Addelson, S. E.	carpenter with C. F. Millett	Ash st near Congress av.
Agus, Paul	grocer	Pecan st b Trinity and Neches st
Alexander, William	Attorney General; Attorney General's office, Supreme Court	private office and res cor Colorado and Hickory sts
	building, first door to the left, Capitol Square	opposite Market House
Alexander & Son	druggists	Congress av b Pecan and Bois d'Arc sts
Alexander, Dr. J. T.	of Alexander & Son, druggists	res Blind Asylum
Alexander, N. J.	of Alexander & Son, druggists	res Congress av b Pine and Cedar sts
Alexander, E. H.	clerk with Alexander & Son, druggists	bds City Hotel
Alexander, Samuel	clerk with Alexander & Son, druggists	bds cor Hickory and Brazos sts
Algea, Y.	tinner, with Caldwell & Riggins, hardware dealers	cor Pecan and Neches sts
Aliston, Shelton	machinist	res s w cor Peach and San Antonio sts
Allen, Geo. T.	wheelwright at Sawyer, Ficklin & Scott's shop, cor Bois d'Arc and Trinity sts	res cor Trinity and Cypress sts
Allen, John (col)	porter, with W F Bengener, tinner	Congress av b Hickory and Ash sts
Allen, Malinda (col)	washerwoman	res Brazos st b. Hickory and Bois d'Arc sts
Alridge, Ned (col)		res Red River st b Mesquit and College av
Amsler & Bendrat	lumber dealers	south of Freight Depot
Anderson, Col C. D.	civil engineer	res Mulberry st b Guadalupe and San Antonio sts
Anderson, Washington	farmer	res s e cor Congress av and Cherry st
Anglemyer, Allen	carpenter	res Water av b Brazos and San Jacinto sts
Anglemyer, Sam	carpenter with C. F. Millett	Ash st near Congress av
Anstin, A.	restaurant keeper	Pecan st b Congress av and Brazos st
Anstin, C.	tailor with R. Renz	Congress av b Hickory and Ash sts
Archer & Meyer	saloon keepers, basement of Ziller building	n e cor Congress av and Pecan st
Archer, W. W.	of Archer & Meyer, saloon keepers	n e cor Congress av and Pecan st
Arlitt, F. H.	draughtsman in Land Office	res Walnut st b Trinity and Neches sts
Arlitt, Max	apprentice, with B. Radkey, tinner	Congress av b Hickory and Ash sts

Arnz, R.	tinner, with Radkey	Congress av b Hickory and Ash sts
Artesian Well		Capitol Square, north of Capitol
Ashby, V. W.	salesman, Sampson & Henricks, merchants	s w cor Congress av and Bois d'Arc st
Asher, C.	merchant, Pecan st b Congress av and Brazos	res cor Hickory and Brazos sts
Austin Collegiate	Prof B J Smith principal	n w cor Pecan and Guadalupe sts
Female Institute		
Austin Ice Factory	J Foutrel, superintendent	Water av on river bank near old City Mill
Austin Ice Company	M. Paggi, superintendent	manufactory on river bank foot of San Jacinto st
Avenue Hotel	Dr T J Moore, proprietor	Congress av b Bois d'Arc and Hickory sts
Ayers, E. H.	physician	Congress av b Hickory and Ash sts
Bacon, W. N.	clerk, Executive office, Capitol	bds at Kluge's restaurant, Congress av near cor Bois d'Arc st
Bacon, J. B.	physician	res cor Peach and San Jacinto st
Bahn, A.	<i>Jeweler, Congress av near s w cor Bois d'Arc st</i>	<i>res n e cor Congress av and Cypress st</i>
Baker, S. W.	physician	res Congress av b Water av and Live Oak st
Baker, D. W. C.	formerly of Baker & Raymond, druggists	res suburban
Baker, Thomas	teacher in Blind Asylum	res Blind Asylum
Baker, Lee (col)	porter with Stuart & Mair, commission merchants	near Freight Depot
Banks, Ed (col)	barber, with Milton Wallace	Pecan st b Congress av and Brazos st
Banton, George (col)	street wagon	res West av end of Bois d'Arc st
Baptist Church		n e cor Colorado and Mulberry sts
Baptist Church (col.)		San Antonio st b Hickory and Ash st.
Barker, Geo. A.	book-keeper, with L W Collins, merchant	bds Avenue Hotel
Barnard, J. T.	blacksmith at Sawyer, Ficklin & Scott's shop	cor Bois d'Arc and Trinity sts
Barnes, W. S.	grocery and meat market	s e cor Hickory st and East av
Barnes, C. W.	assistant assessor U S internal revenue Brown's building	Brazos st b Pecan and Bois d'Arc sts
Barr, Robert		res n w cor Live Oak and Lavaca sts
Barrick, John	plasterer	res s e cor Mulberry and Rio Grande sts
Barron, James B.	plasterer	res Pine st b Trinity and San Jacinto sts
Bartholomew, E. C.	clerk, office Department of Education, Capitol	res Bois d'Arc st b Brazos and San Jacinto sts
Basse, Wm.	clerk with Walter Tips & Co hardware merchants	Congress av b Bois d'Arc and Hickory sts
Bastian, F.	<i>Bookbinder, Taylor's building, Congress av b Hickory and Ash sts</i>	<i>res s e cor Cherry and Brazos sts</i>
Bastian, Henry	clerk, Adjutant General's office, Capitol	res s e cor Cherry and Brazos sts
Bates & O'Neal	proprietors City Hotel	n w cor Congress av and Cedar st
Bates, N. B.	of Bates & O'Neal, City Hotel	nw cor Congress av and Cedar st

Battaile, I F & Co	commission merchants and wholesale grocers	east extension Pine st near Freight Depot
Battaile, I. F.	of I F Battaile & Co commission merchants	res Cedar st b Neches and Red River sts
Bauer, John	painter	res s e cor Mesquit and San Jacinto sts
Baughn, J. A.		res Pine st b Brazos and San Jacinto st
Baulch, John J.	telegraph operator	res Pine st b Lavaca and Guadalupe sts
Baxter, _____	stone mason	res n w cor Live Oak and Colorado sts
Beales, Wm.	carpenter with Byrne & Schubert	Ash st b Congress av and Colorado st
Bean, Frank	barber with Harry Hawkins	Congress av b Bois d'Arc and Pecan sts
Beckham, B. W.	clerk, Postoffice, Swenson building	Hickory st near Congress av
Bell, Wm. H.	Wholesale Grocer	Congress av and Pecan st
Bell, C. C.	clerk with Wm H Bell, grocer	Congress av near Pecan st
Bell, Rufus (col)		res Cedar st b San Jacinto and Nueces sts
Belmontes, Juan	restaurant keeper	Pecan st b Congress av and Colorado st
Beman, Chas A.	printer, Gazette office, Congress av b Pecan and Pine	bds s w cor Mulberry and San Jacinto sts
Bendrat, H.	of Amsler & Bendrat lumber dealers near Freight Depot	res s w cor Congress av and Linden st
Bengener, W. F.	tinner, Congress b Hickory and Ash sts	res Trinity st b Pecan and Bois d'Arc sts
Bengener, H. C.	shoemaker	res s w cor Cedar and Lavaca sts
Bennett, W. B.	tinner, with B Radkey	Congress av b Hickory and Ash sts
<i>Bennett, J. M.</i>	<i>Blacksmith, sw cor Colorado and Pecan sts</i>	<i>res North Av b Colorado av and Lavaca st</i>
Bennett, B. C.	boarding house	s e cor Live Oak and San Antonio sts
Bernd, Fritz	carpenter	Walnut st b Trinity and Neches sts
Berryman, C. W.	general merchandise, Congress av b Hickory and Ash sts	res s e cor Hickory and Lavaca sts
Berryman, R. L.	clerk with C W Berryman, merchant	Congress av b Hickory and Ash sts
Berrerra, John	apprentice with W H Gaynor, painter	Congress av b Ash and Mulberry sts
Bertram, R.	Grocer, ne cor Cherry and Guadalupe sts	res n w cor Cherry and Lavaca sts.
Besserer, C. W.	of Buaas & Besserer, music dealers	Pecan st b Congress av and Brazos st
Best, Ph.	stone mason	res cor Ash and Red River sts
Bettetino, Wm.	general merchandise, Congress av b Hickory and Ash	Pecan st b Brazos and San Jacinto sts
Betton, Julian	dealer in boots and shoes, Congress avb Pecan and Bois d'Arc sts	bds s w cor Congress av and Bois d'Arc st
Biberstein, A.	dealer in dry goods, Congress av b Pecan and Bois d'Arc sts	res s e cor Walnut and San Antonio sts
Bickler, Prof Philip	principal of German School	res San Jacinto st b North and Walnut sts
Billeisen & Block	saloon keepers	Pecan st b San Jacinto and Trinity sts
Billeisen, J B	of Billeisen & Black	Pecan st b San Jacinto and Trinity sts
Billups, W S	lawyer, Congress av b Hickory and Bois d'Arc sts	bds with R S Rust, College av east of Capitol

Binford, Maj R A	of Ford & Co commission merchants	res s e cor Bois d'Arc and San Antonio sts
Birkner, G S	brick mason	res s w cor Mulberry st and East av
Birnbaum, B	cotton buyer, with Hellman & Gans	East av near Freight Depot
Birzendine, J R	machinist with Loomis & Christian	Congress av near Capitol Square
Bishop, Mrs Lucy H		res Hickory st b Red River and Neches sts
Bitter, Joseph	city policeman	
Blackburn, W A	of Robarts & Blackburn, lawyers	n w cor Congress av and Bois d'Arc st
Blake, Rudolph	printer, Lone Star Ranger office	res Mulberry st opposite State Journal office
Blanchard, Thomas	merchant	res suburban
Blandford, R A	<i>Insurance Agent (see advertisement)</i>	
Bley, C H	<i>Upholsterer and Carriage Trimmer</i>	<i>North av b Colorado and Lavaca sts</i>
Blessington, J P	salesman with Sampson & Henricks, merchants	Pecan st b Colorado and Lavaca sts
Bledsoe, A	Comptroller of Public Accounts, Treasury building	res mile and one-half north of Capitol
Bledsoe, W A	clerk, Comptroller's Department, Treasury building	res suburban
Blind Alyum	Dr J T Alexander, superintendent	n e cor Chestnut and Sabine sts
Block, C	of Billeisen & Block saloon keepers	Pecan st b San Jacinto and Trinity sts
Blocker, Lee (col)		res Bois d'Arc st b Sabine st and East av
Blomeke, A	dry goods and groceries	Congress av b Pine and Cedar sts, adjoining City Hotel
Blount, Louis (col)	barber, with Milton Wallace	Pecan st near Congress av
Blumentritt, Louis	grocer	East av b Pecan and Bois d'Arc sts
Bluhm, Rudolph	bar keeper at Esser's saloon	Congress av near Ash st
Blunn, Joseph	carriage trimmer with Jones & Stelfox, s w cor Pine and Colorado sts	res two miles south of Colorado river
Boardman, G T	dentist nw cor Congress av and Bois d'Arc st	res Ash st b Rio Grande and Nueces sts
Bock, Edward	patent clerk, Land Office	res cor North av and Lavaca st lot A block 89 division E
Boerner, Louis	shoemaker with A Heileman	Congress av b Bois d'Arc and Hickory sts
Bomfort, L	fruit dealer	s w cor Congress av and Hickory st
Bonnett, Mrs P		res n e cor North av and Sabine st
Bothe, G J	clerk, Anstin's restaurant	Pecan st b Congress av and Brazos st
Bothe, Charles A	barber	Pecan st b Congress av and Brazos st
Bowers, J A	clerk, Comptroller's office, Treasury building	res cor North and West avs
Bowers, Mrs M H		res s e cor Cherry st and West av
Bowers, Ed (col)	drayman	res Bois d'Arc st b Trinity and Neches sts
Bowles, Tom		res Peach st b Colorado and Lavaca sts

Bowles, P J S	saddler with Hull Bros, Congress av near nw cor Hickory st	res Peach st b Colorado and Lavaca sts
Boyd, Rev John (col)		res Chestnut st b Guadalupe and San Antonio sts
Bozeth, Charles Sr	stone mason	res n e cor Live Oak and San Antonio sts
Bozeth, Charles Jr	stone mason	res n e cor Live Oak and San Antonio sts
Brady, James	saloon keeper	n e cor Pecan st and East av
Brahl, M	tobacconist	Congress av near n e cor Bois d'Arc st
Branshaw, A	clerk, with B Radkey, tinner	Congress av b Hickory and Ash sts
Brass, P	feed store	Pecan st b Trinity and Neches
Bratton, Peter (col)	blacksmith	res Colorado st b Cedar and Cypress sts
Bremond, Eugene	banker and dealer in exchange, Pecan st b Congress av and Brazos st	res s w cor Hickory and Guadalupe sts
<i>Bremond, John</i>	<i>Wholesale Merchant, Pecan st b Congress av and Brazos</i>	<i>res n w cor Bois d'Arc and Guadalupe sts</i>
Brennan, Wm	bar keeper, Mitchell's saloon	Congress av near n e cor Bois d'Arc st
Brewster, Nellie (col)	washer-woman	Brazos st b Pecan and Pine sts
Bridge and Ferry	Metropolitan Pontoon (new), over Colorado river	near foot of West av Cunningham & Thompsen proprietors
Bridge, Pontoon	over Colorado river	foot of Brazos st, J M Swisher, proprietor
Bridge over Shoal creek		Pecan st near West av
Bridge over Waller creek		Pecan st neat Sabine st
Bridge over Waller creek		(railroad and foot), east Pine st
Bridge over Waller creek		east Cedar st
Bridge over Waller creek		cor Live Oak and Red River sts
Brinckman, Alex	carpenter	res n e cor Colorado and Ash sts
Brisentine, _____	carpenter	res s e cor Mesquit and Nueces sts
Britton, Frank L	Governor's private secretary, Executive office, Capitol	res Governor's Mansion
Brooks, J H	billiard keeper, Mitchell's saloon	Congress av near n e cor Bois d'Arc sts
<i>BROOKS & EMMERSON</i>	<i>Dealers in Lumber</i>	<i>east extension Cypress st near Freight Depot</i>
Brooks, J K	Brooks & Emmerson, dealers in lumber	near Freight Depot
Brotze, Richard	assistant draughtsman, Land Office	res cor Linden and Trinity sts
Brower, F	Brower & Kane, blacksmiths	Colorado st b Pecan and Bois d'Arc sts
Brown, Leander		res Brazos st b Water av and Live Oak st
Brown, Frank	Deputy Clerk District Court; office Court House	res west side West av b Cherry st and North av

Brown, Mrs Melissa		res Neches st b College av and Peach st
Brown, James	clerk, Comptroller's office, Treasury building, Capitol Square	res s w cor Magnolia av and San Jacinto st
Brown, Martin (col)	cook, City Hotel	n w cor Congress av and Cedar st
Brown, Wm	with Radcliffe Platt, livery-stable keeper	Pecan st b Trinity and San Jacinto sts
Brown, B (col)	cook, Kluge's restaurant	Congress av b Pecan and Bois d'Arc sts
Brown, J S	butcher, with A G Buddington stall No 1, City Market	
Brown, Nelson (col)	butcher, with A G Buddington, stall No 1, City Market	
Browne, Rev G W G		res Lavaca st b Hickory and Bois d'Arc sts
Bruchonneau, _____	carpenter	res Water av b Congress av and Brazos st
BRUEGGERHOFF, WM	<i>Grocer, Miller's old corner, ne cor Congress av and Bois d'Arc st</i>	res Mulberry st b Congress av and Brazos sts
Brush, S B	general merchandise, Congress av b Pecan and Pine sts	res cor Pecan and Trinity sts
Brush, Wm B	clerk, with S B Brush, Congress av b Pecan and Pine sts	res cor Pecan and Trinity sts
BUASS & BESSERER	<i>Music Store</i>	<i>Pecan st b Congress av and Brazos st</i>
Buaas, J L	of Buaas & Besserer, music dealers	Pecan st b Congress av and Brazos st
Buckner & Robinson (col)	barbers	Pecan st b Congress av and Colorado st
Buddington, A G	butcher stall No 1, City Market	
Burden, Henry (col)	porter with W H Bell	Congress av near s w cor Pecan st
Burgess, L A	clerk, with T W English, lumber dealer	near Freight Depot
Burgess, B B	clerk, with T W English, lumber dealer	near Freight Depot
Burland, M G	bar keeper, Air Line Saloon	Pecan st near Congress av
Burnham, Mrs S		res s e cor Ash and Guadalupe sts
Burnham, Horace	apprentice, with John Headspeth, carpenter	s w cor Colorado and Walnut sts
Burns, John H		res n e cor College av and Guadalupe st
Burns, Peter	saloon keeper	east extension Pine st near Freight Depot
Burroughs, L K	clerk, with W H Bell, grocer	Congress av near s w cor Pecan st
Burtine, John	foreman Miller's livery stable	Bois d'Arc near Congress av
Burton, J L	carpenter, with C F Millett	Ash st near Congress av
Bush, C M	clerk	res north of Freight Depot
Butler, Geo J		res cor Walnut and Trinity sts
Butler, Simon (col)	street wagon	res s w cor Brazos st and North av
Byles, W S	of Fields & Byles, brick masons	res Hickory st b Colorado and Lavaca sts
Byrne & Schubert	carpenters	Ash st b Congress av and Colorado st
Byrne, Miles	of Byrne & Schubert, carpenters	res s w cor College av and Nueces st

Caifassi, Signor	sculptor	office and res Colorado st b Cedar and Cypress sts
Caldwell, Mrs Milly P		res College av b Neches and Trinity sts
Caldwell, O B		res cor College av and Guadalupe st
Caldwell & Riggins	hardware dealers	cor Pecan and Neches sts
Caldwell, A W	of Caldwell & Riggins, hardware dealers	cor Pecan and Neches sts
Calhoun, _____	carpenter	res Walnut st b Sabine st and East av
Callaway, Charles M	corresponding clerk Land Office	res cor College av and San Jacinto st
Cameron, H C	carpenter	res cor Mulberry and Trinity sts
Cameron, H	grocer	East av b Pecan and Pine sts
Camp, John	clerk with W A Martin, lumber dealer	cor Pecan and Sabine sts
Campbell, C J	carpenter	res n w cor Ash and Rio Grande sts
Campbell, Peter H	carpenter, with Loomis & Christian	Congress ave near Capitol Square
Campbell, T J	carpenter, with C F Millett	Ash st near Congress av
Campbell, Samuel	brick mason	res se cor Cypress and Guadalupe sts
Cannon, L W	clerk with T W English, lumber dealer, near freight depot	res n w cor Pine st and East av
Cardenas, Jose Maria	silver smith	Pecan st b Colorado and Lavaca sts
Cardwell, John	of Statesman Publishing Company, editor Democratic Statesman	res Mrs. Raymond's one mile north of city
Carleton, Fred W	lawyer of Hurd, Chandler & Carleton; office Pine st, first door west of Congress av	res n e cor Mulberry and San Antonio sts
Carleton, Mrs E M		res cor Trinity and Hickory sts
Carleton, Mrs M J	milliner and dress maker	Pecan st b Brazos st and Congress av
Carleton, Ernest	salesman with Th H Philipson & Co wholesale merchants	Pecan st near Congress av
Carlson, C		res s e cor Linden and Neches sts
Carmichael, Thos P	Atlantic Garden	cor Pecan and Trinity sts
Carmody, John	city policeman	
Carpenter, W E	clerk with W B Smith, merchant	Congress av b Pecan and Bois d'Arc sts
Carr, Mrs K G		res North av b Neches and Red River sts
Carrel, John G	clerk with L W Collins, merchant	Avenue Hotel building
Carrington, Rev W H D		res s w cor Mulberry and Lavaca sts
Carrington, L D & Co	general merchants	Congress av b Ash and Hickory sts
Carrington, R E	of L D Carrington & Co, merchants	res cor College av and Neches st
Carrington, L D Sr	of L D Carrington & Co, merchants	res cor College av and Neches st
Carrington, L D Jr	clerk with L D Carrington & Co, merchants, Congress av b Hickory and Ash sts	res cor College av and Neches st

Carrington, E H	grocer	cor Pecan and Red River sts
Carrington, A (col)	blacksmith with Wm E Risher	Pecan st b Sabine st and East av
Carritte, T W	physician, opposite Raymond House	res Mesquit st b Trinity and Neches sts
Carson, J	bootmaker, Pecan st b Congress av and Brazos st	bds Rock's restaurant, Pecan st b Congress av and Brazos st
Carter, Jo (col)	restaurant	Pecan st b Congress av and Colorado st
Carter W E & Co	sewing machine agency, B C Wells' store	Congress av b Bois d'Arc and Hickory sts
Cassidy, J B	lawyer	res Hickory st b Neches and Trinity sts
Castleman, R M	dealer in dry goods, Congress av b Pecan and Bois d'Arc sts	res cor Bois d'Arc and Trinity sts
Cater, Thos E	dealer in general merchandise, Swenson building, Congress b Bois d'Arc and Hickory	res with Mrs . McCall s w cor Congress av and Walnut st
Chadwick, R A	book-keeper with C R Johns & Co, bankers	res Live Oak st b Trinity and Neches sts
Chalmers, Alex (col)		res cor Water av and San Jacinto st
Chandler, F W	lawyer of Hurd Chandler & Charleton, Pine st west of Congress	res n e cor Linden st and West av
Chandler, Wm M	clerk	res with F W Chandler ne cor Linden st and West av
Chandler, Jacob		res with F W Chandler ne cor Linden st and West av
Chapman, E O	clerk, Department of Education, Capitol	res cor Chestnut and Neches sts
Christian, Ed	of Loomis & Christian, contractors and builders, Congress av near Capitol Square	res n w cor Peach and Guadalupe sts
Christian, J Wilhelm	apprentice, with Loomis & Christian, carpenters	Congress av near Capitol Square
Christian Church		n w cor Hickory and Colorado sts
Churchill, John S	tinner with W F Bengener, Congress av b Hickory and Ash sts	res Ash st b Sabine st and East av
City Brewery	F W Sutor proprietor	s e cor Live Oak and Guadalupe sts
City Cemetery		near n e cor of city corporate limits, east of Blind Asylum
City Hall		over Market House, n e cor Colorado and Hickory sts
City Hotel		n w cor Congress av and Cedar st
Clarke, W F	of Lawrence & Clarke, land agents, room No 24, Avenue Hotel building	over Thomspson & Fox's drug store
Clarke, B	bar keeper with Metz & Musgrove	Pecan st b San Jacinto and Trinity sts
Clarke, N	painter	Brazos st b Pecan and Pine sts
Clarkson, Matthew	carpenter with Loomis & Christian	Congress av near Capitol Square
Clay, Delilah (col)		res Peach st b Neches and Red River sts
Clements, F (col)	blacksmith with Jones & Stelfox	res cor Mulberry and Red River sts

Cleveland, Alice (col)	seamstress	res Live Oak st b San Jacinto and Trinity sts
Cloud, John W		res Mulberry st b Congress av and Colorado st
Cloud, D R	of Long & Cloud, dollar store	Congress av b Bois d'Arc and Pecan sts
Cluff, Dr P P	office Cook's building, cor Pecan st and Congress av	res s w cor Cypress and Colorado sts
Coffey, J	stone mason	res with James Hickey, Lavacast b Pecan and Pine sts
Cohen, Sampson & Co.	general merchandise, Ziller building	n e cor Congress av and Pecan st
Cohen, Eug S	of Cohen, Sampson & Co., merchants	n e cor Congress av and Pecan st
Collens, T M	salesman, with Sampson & Henricks	s w cor Congress av and Bois d'Arc st
<i>COLLINS, L W</i>	<i>Dealer in general merchandise, Congress av b Bois d'Arc and Hickory sts</i>	<i>res cor Hickory and Red River sts</i>
Collins & POWERS	<i>Dealers in Fine Boots, Shoes etc and Family Groceries</i>	<i>west side Congress av near n w cor Bois d'Arc</i>
Collins, Dennis	of Collins & Powers	Congress av near Bois d'Arc st
Collson, J H	hostler, at Kluge's restaurant	Congress av b Pecan and Bois d'Arc sts
Conio, Soni	grocer	Pecan st b Congress av and Brazos sts
Conley, Patrick		res cor Pecan and Sabine sts
Conner, Capt John H		res cor Pecan and Sabine sts
Conner, D H		res with Capt John H. Conner
Cooley, A O	lawyer	res n w corner North av and Red River st
Coonie, Charles	grocer	n w cor Cypress and Nueces sts
Cook, A H & Son	contractors and builders	office cor Congress av and Pecan st
Cook, Abner H Sr	of A H Cook & Son	res s e cor College av and Lavaca st, west of Capitol
Cook, Abner H Jr	of A H Cook & Son	res s w cor Mesquit and Guadalupe sts
Cooke, Jas R	physician, Glasscock building, Congress av b Ash and Mulberry sts	res Peach st b Nueces and Rio Grande sts
Cooper, Samuel	carriage and sign painter, old Gazette building	Bois d'Arc street near Congress av
Cope, James P	plasterer	res Cypress st b Neches and Red River sts
Copeland, W D		res s w cor Linden and Neches sts
Corwin, Dennis	civil engineer	res West av b Hickory and Bois d'Arc sts
Costa, Joseph	clerk, with B Melasky, merchant	Congress av b Pecan and Bois d'Arc sts
Costa, John B	lawyer, office n w cor Pine st and Congress av	res cor Trinity and Hickory sts
Cotton, B F		res San Jacinto st b Bois d'Arc and Pecan sts
Cotton, W D		res San Jacinto st b Bois d'Arc and Pecan sts
Cotton, Bud		res San Jacinto st b Bois d'Arc and Pecan sts
Courtade, Mrs M	meat market	Pecan st west of bridge over Shoal creek
Court House and Jail		s w cor Cedar and Guadalupe sts

Cox & Co	general merchandise	cor Red River and Ash sts
Cox, A H	of Cox & Co	cor Red River and Ash sts
Coyle, Mrs M	boarding house	Pine st b Brazos and San Jacinto sts
Craft, Perry (col)	carriage driver, Miller's livery stable	Bois d'Arc st near Congress av
Crane, E W	carpenter, with C F Millett	Ash st near Congress av
Cramer, T E	market gardener, city market	res Pecan st near iron bridge on Shoal creek
Crank, J M	agent Houston Direct Navigation Company	Raymond House
Cron, Philip	hair dresser and wig maker	Pecan st near s w cor San Jacinto st
Cron, C	barber with Chas A Bothe	Pecan st b Congress av and Brazos st
Crosby, J F	lawyer	res s e cor Hickory and San Antonio sts
Criser, C W		res Peach st b San Jacinto and Trinity sts
Cruz, Esperidion	shoemaker	Pecan st b Congress av and Colorado st
Crystal Oil Company		Pecan st b Brazos and San Jacinto sts
Culberson, Jo (col)	hostler, Long's livery stable	n e cor Congress av and Ash st
Cullen & Denton	lawyers, Smith building	Congress av b Pecan and Pine sts
Cullen, O H	of Cullen & Denton, lawyers	res block No 22, s e cor Cypress and San Antonio sts
Culmore, Charles		res Glasscock place, West av end of Walnut st
Cumberland		ne cor Bois d'Arc and Lavaca sts
Presbyterian Church		
Cummings, J	physician, office Hickory st b Congress av and Colorado st	res cor Red River and Walnut sts
Cummings, J R	grocer, Pecan st b Neches and Trinity sts	res cor Red River and Walnut sts
Cummings, Stephen	printer	res Walnut st b Red River and Sabine sts
CUNNINGHAM, L C & SON	<i>Dealers in Lumber</i>	east extension Cedar st near Freight Depot
Cunningham, L C	of L C Cunningham & Son, lumber dealers near Freight Depot	res Canterbury Square
Cunningham, J L	of L C Cunningham & Son, lumber dealers near Freight Depot	res Canterbury Square
Cunningham, J H	lawyer	Room No 32 Avenue Hotel
Cunningham & Thompson	Metropolitan Pontoon Bridge	near foot of West av
Cunningham, J A	of Cunningham & Thompson, pontoon bridge keepers	res Live Oak st b San Antonio and Nueces sts
Cunningham, D	carpenter with Loomis & Christian	Congress av near Capitol Square
Cunningham, R D	wheelwright with Wm E Risher	Pecan st near East av
Curtis, Mrs A F		res s w cor Hickory and Colorado sts
Cushman, Esq F E		cor Colorado and Hickory sts opposite the Market House

The Two Families of Robert W. TEMPLETON

Janis Templeton Trayler, AGS Board Member

Family One

Generation 1

1. **ROBERT W.³ TEMPLETON** (*ROBERT², DAVID TEMPLETON¹ SR.*) was born 18 Jan 1823 in South Carolina¹ and died 15 Jan 1882 in Christian County, Illinois². He is buried in Bethany Cemetery, South Fork, Christian County, Illinois. Although there are no specific documents to prove the formality of the union, he is believed to have married **JEMIMA P.** about 1847 in or around Tippah County, MS. They were listed on the 1850 federal Census for Tippah County, MS with two children. She was born 23 Apr 1828 in South Carolina³, and died after Jun 1900 in Silver Valley, Coleman County, Texas.⁴ Sometime after the birth of their last child, Robert left the family.

Children of ROBERT & JEMIMA TEMPLETON are:

- i. **BARBARA A. P.⁴ TEMPLETON**, b. Abt. 1848, MS⁵
- ii. **BENJAMIN F. TEMPLETON**, b. Abt. 1849, MS⁶
- iii. **GEORGE W. TEMPLETON**, b. Abt. 1850, MS⁷
2. iv. **LEVI YOUNG TEMPLETON**, b. 16 Jun 1852, MS⁸; d. 21 Feb 1894, Abilene, Taylor County, TX⁹
3. v. **THOMAS MARTIN TEMPLETON**, b. 18 Jul 1853, Tippah County, MS¹⁰; d. 11 Aug 1936, Silver Valley, Coleman County, TX
- vi. **MARY TEMPLETON**, b. Abt. 1854, MS¹¹

4. vii. **SUSAN CORDELIA TEMPLETON**, b. 24 Sep 1857, TN¹²; d. 27 Feb 1922, Johnson County, TX¹³

Generation 2

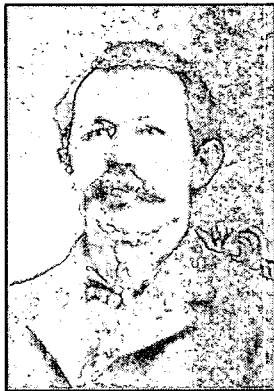
2. **LEVI YOUNG⁴ TEMPLETON** (*ROBERT W.³, ROBERT², DAVID TEMPLETON¹ SR.*) was born 16 Jun 1852 in Mississippi, and died 21 Feb 1894 in Abilene, Taylor County, TX¹⁴. He married **TILITHA ROWENA BILLS** on 25 Jun 1869 in Hopkins County, TX¹⁵, daughter of **ISAAC WALKER BILLS** and **CHARLOTTE N. MYERS**. She was born 10 Apr 1855 in Delta County, TX¹⁶, and died 4 Apr 1941 in Post, Garza County, TX¹⁷.

Children of LEVI TEMPLETON and TILITHA BILLS are:

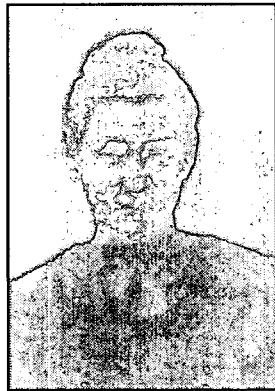
9. i. **CHARLOTTA CALDONIA⁵ TEMPLETON**, b. 07 Jan 1872, Coleman County, TX; d. 21 Sep 1938, Plainview, Hale County, TX¹⁸
10. ii. **DOVEY PAULINA TEMPLETON**, b. 02 Feb 1875, Texas; d. 10 Jun 1944, San Antonio, Bexar County, TX¹⁹
11. iii. **ISAAC JASPER TEMPLETON**, b. 30 Oct 1877, Coleman County, TX; d. 19 Nov 1944, Dallas County, TX²⁰
12. iv. **WALTER TIPS TEMPLETON**, b. 07 Sep 1880, Coleman County, TX; d. 06 Apr 1967, Philo, Mendocino County, CA²¹
13. v. **JOHN THOMAS TEMPLETON**, b. Mar 1882²² Married MYRTLE J.

- vi. MARY G. TEMPLETON, b. Mar 1886²³
- 14. vii. MARSHALL FLOYD TEMPLETON SR, b. 11 May 1890, Texas; d. 05 Mar 1966, Dallas County, TX²⁴
- 15. viii. HUGH ELDRED YOUNG TEMPLETON, b. 24 Jun 1893; d. Jan 1969, Dallas County, TX²⁵

3. THOMAS MARTIN⁴ TEMPLETON (*ROBERT W.³, ROBERT², DAVID TEMPLETON¹ SR.*) was born 18 Jul 1853 in Tippah County, MS and died 11 Aug 1936 in Silver Valley, Coleman County, TX²⁶. He married MARTHA PARTHENIA "MOLLIE" BILLS 11 Dec 1872 in Delta County, TX²⁷, daughter of ISAAC WALKER BILLS and CHARLOTTE N. MYERS. She was born 31 Dec 1850 in TX and died 04 Apr 1930 in Silver Valley, Coleman County, TX²⁸. Both are buried at Mount View Cemetery in Coleman County, TX.



Thomas Martin Templeton



Martha "Mollie" Bills

Children of TOM TEMPLETON and MOLLIE BILLS are:

- i. M. ARMINTA TEMPLETON²⁹, b. 28 Feb 1874, Coleman County, TX; d. 20 Feb 1896, Coleman County, TX³⁰ Buried at Glen Cove Cemetery in Coleman County, TX
- 16. ii. FELIX GRUNDY TEMPLETON, b. 10 Jun 1876, Silver Valley, Coleman County, TX; d. 30 Aug 1960, Coleman County, TX Buried at

Mt. View Cemetery in Coleman County, TX³¹

- 17. iii. TILITHA ARNETTA TEMPLETON, b. 16 Oct 1878, Delta County, TX; d. 25 May 1969, Coleman County, TX³²
- 18. iv. LAURA JANE TEMPLETON, b. 31 Jan 1880, Coleman County, TX; d. 15 Jul 1967, Eastland, Eastland County, TX³³
- 19. v. ROBERT WALTER TEMPLETON, b. 04 May 1883, Bell County, TX; d. 08 Feb 1939, Coleman County, TX³⁴
- vi. B.F. TEMPLETON, b. 07 Feb 1885, Coleman County, TX; d. 09 Feb 1885, Coleman County, TX³⁵ Buried at Glen Cove Cemetery in Coleman County, TX Grave is beside that of his sister, ARMINTA TEMPLETON.
- 20. vii. MARTIN LUTHER "LUTE" TEMPLETON, b. 29 Apr 1886, Coleman County, TX; d. 21 Nov 1965, Amarillo, Potter County, TX Buried at Llano Cemetery in Amarillo, TX³⁶



Martin Templeton

- 21. viii. YOUNG JOHN TEMPLETON, b. 16 Mar 1889, Coleman County, TX; d. 12 Dec 1928, Coleman County, TX Buried at Coleman City Cemetery, Coleman County, TX³⁷

- ix. JONATHAN EDGAR "EDD" TEMPLETON, b. 07 Jun 1891, Fisher County, TX³⁸ m. (1) MYRA JANE BROWN, 01 Dec 1912, Coleman County, TX³⁹; b. 22 Nov 1893, Texas, d. 27 Mar 1961, Santa Anna, Coleman County, TX⁴⁰; m. (2) CLARICE YATES, 28 Apr 1963, Coleman County, TX⁴¹ Edd died 1 Nov 1971 in Coleman County, TX⁴²

4. SUSAN CORDELIA⁴ TEMPLETON (*ROBERT W.³, ROBERT², DAVID TEMPLETON¹ SR.*) was born 24 Sep 1857 in Tennessee⁴³, and died 27 Feb 1922 in Johnson County, TX. She married JOSEPH L. COLBERT. He was born 1838, and died 1915 in Hunt County, TX.

Children of SUSAN CORDELIA TEMPLETON and JOSEPH L. COLBERT are:

- i. LEE W. COLBERT, b. About 1875⁴⁴
- ii. PEARL COLBERT, b. 1879⁴⁵
- 22. iii. MYRTLE COLBERT, b. About 1885⁴⁶
- 23. iv. JOSEPH RICHARD COLBERT, b. 1888, Coleman County, TX; d. 16 Sep 1939⁴⁷
- v. JAMES HUGH "HUDY" COLBERT, b. About 1891⁴⁸

Family Two

Generation 1

ROBERT W. TEMPLETON married second SARAH E. ESTELL on 3 May 1866 in Sangamon County, IL⁴⁹, daughter of STEPHEN ESTELL and ELIZABETH PAULEY. She was born 1848 in Indiana⁵⁰, and died 1883 in Illinois⁵¹.

Generation 2

Children of ROBERT TEMPLETON and SARAH ESTELL are:

- 5. viii. EMMA ELIZABETH JANE⁴ TEMPLETON⁵², b. Oct 1870, Christian County, IL
- 6. ix. FRANCES REBECCA TEMPLETON⁵³, b. Mar 1872, MO
- 7. x. THEORA W. TEMPLETON, b. 03 Mar 1873, Missouri⁵⁴; d. 02 Apr 1944, Kiowa, Barber County, KS
- xi. MARIAH MAY TEMPLETON, b. Abt. 1875, Missouri⁵⁵; d. 01 Sep 1902, Christian County, IL⁵⁶; m. JOHN B REEVES, 04 Jul 1900, Christian County, IL⁵⁷; b. Apr 1876, KS⁵⁸
- 8. xii. JOHN WESLEY TEMPLETON, SR.⁵⁹, b. 21 Apr 1878, MO

5. EMMA ELIZABETH JANE⁴ TEMPLETON (*ROBERT W.³, ROBERT², DAVID TEMPLETON¹ SR.*)⁶⁰ was born Oct 1870 in Christian County, IL⁶¹. She is the first child of ROBERT TEMPLETON AND SARAH ESTELL TEMPLETON. Nicknamed BETTIE/BETTY, she married ARTHUR B. CROWL on 28 Nov 1889 in Christian County, IL⁶². He was born Aug 1871 in Illinois⁶³. The marriage index shows her husband's name as ARTHUR B. CROWE.

Children of EMMA TEMPLETON and ARTHUR CROWL are:

- 24. i. KELSEY⁵ CROWL, b. Sep 1891, IL⁶⁴
- 25. ii. CHESTER OTTIS CROWL, b. 04 May 1893, Pawnee, Sangamon County, IL⁶⁵
- iii. GLADYS CROWL, b. Feb 1895, IL⁶⁶

6. FRANCES REBECCA⁴ TEMPLETON (*ROBERT W.³, ROBERT², DAVID TEMPLETON¹ SR.*) was born Mar 1872 in Missouri⁶⁷. She married GEORGE HENRY MASON 04 Jul 1889 in Christian County, IL⁶⁸. He was born Sep 1866 in Illinois.⁶⁹

Children of FRANCES TEMPLETON and GEORGE MASON are:

26. i. OSCAR ALVIN⁵ MASON, b. 30 Jun 1892, Illinois; d. 13 Jan 1961, Los Angeles, CA⁷⁰
- ii. FREDA L. MASON, b. Dec 1896, IL
27. iii. MERVIN G. MASON, b. 04 Apr 1901, Illinois; d. Mar 1972, Enid, Garfield County, OK
- iv. VOLTA L. MASON, b. Abt. 1904, IL

7. THEORA W.⁴ TEMPLETON (ROBERT W.³, ROBERT², DAVID TEMPLETON¹ SR.) was born 03 Mar 1873 in Missouri⁷¹, and died 02 Apr 1944 in Kiowa, Barber County, KS. He married LUELLA TAYLOR⁷².

Children of THEORA TEMPLETON and LUELLA TAYLOR are:

- i. PEARL M.⁵ TEMPLETON ⁷³ b. Feb 1898, IL
28. ii. RUTH MAE TEMPLETON, b. Jun 1900, Pawnee, IL; d. Jun 1984, Panonia, Delta County, CO
29. iii. IRVIN R. TEMPLETON, b. 14 Aug 1902, Pawnee, Christian County, IL; d. Nov 1974, KS
- iv. ETHEL S. TEMPLETON⁷⁴ b. Abt. 1905, IL
30. v. MARTIN T. TEMPLETON, b. 12 Oct 1908, Pawnee, Christian County, IL; d. 27 Apr 1992, Mesa, Maricopa County, AZ.
- vi. ORLMA TEMPLETON⁷⁵, b. Abt. 1913, KS.
- vii. BERNARD TEMPLETON ⁷⁶, b. 1915, IL
- viii. CLEO TEMPLETON⁷⁷, b. 1918, KS

8. JOHN WESLEY⁴ TEMPLETON, Sr (ROBERT W.³, ROBERT², DAVID TEMPLETON¹ SR.) was born 21 Apr 1878 in Missouri ⁷⁸ He married EFFIE ELIZABETH BISHOP 04 Jul 1900 in Christian County, IL.⁷⁹

Children of JOHN TEMPLETON and EFFIE BISHOP are:

- i. GOLDIE T.⁵ TEMPLETON⁸⁰, b. 14 Mar 1901, Christian County, IL⁸¹
31. ii. LYMAN TEMPLETON, b. 12 Oct 1903, Christian County, IL; d. Dec 1981, IL.
- iii. FLOSSIE MAE TEMPLETON⁸², b. 25 Jul 1906, Christian County, IL⁸³
- iv. GRACE MARIE TEMPLETON⁸⁴, b. 06 Mar 1909, Christian County, IL⁸⁵
- v. ARTHUR CLYDE TEMPLETON⁸⁶, b. 11 May 1912, Christian County, IL⁸⁷; d. 26 Nov 1993, IL⁸⁸
- vi. VERNON H. TEMPLETON⁸⁹, b. Abt. 1917, Christian County, IL
- vii. JOHN WESLEY TEMPLETON, JR⁹⁰, b. 18 May 1919, Christian County, IL⁹¹
- viii. RAYMOND L. TEMPLETON⁹², b. 03 Dec 1922, Christian County, IL⁹³; d. 12 Dec 1990, Springfield, IL⁹⁴
Burial: 18 Dec 1990, Camp Butler National Cemetery, Springfield, IL
Military service: Bet. 1942 - 1945, US Army, SSGT, Air Corps

TO BE CONTINUED...

1. *Templeton Family History* by L. B. Templeton, Jr., (First printing & Copyright 1953; Reprinted 2003 by SCMAR, PO Box 21766, Columbia SC), Page 78, "14j Robert W. Templeton was born January 18, 1823. He went from Laurens County, S.C. to Brownington, MO."
2. *Christian County, IL Cemetery Inscriptions, Vol. III*, Printed by the Decatur Genealogical Society, 1974, Page 24.
3. (1) 1900 Federal Census, Coleman County, TX, (2) *Tombstone*, Mt. View Cemetery, Coleman County, TX.,
4. (1) *Tombstone*, Mt. View Cemetery, Coleman County, TX.) (2) 1900 Federal Census, Coleman County, TX, JP Pct #8, ED 24, Sheet 2, Line 27.
5. *Ibid.*, Line 23
6. *Ibid.*, Line 24
7. *1860 Federal Census for Hot Spring County, AR*

8. Ibid.
9. Cemetery Records of Abilene, Taylor County, TX, <http://city.abilenetx.com/cemeteryview>, Viewed 3 Aug 2003, Section: City, Block: 15, Lot: 5, Space: 5.
10. *1860 Federal Census of Hot Spring County, AR*
11. Ibid.
12. Ibid.
13. Texas Death Certificate #5223, Cleburne, Johnson County, TX Texas Dept. of Health, Bureau of Vital Statistics.
14. Cemetery Records of Abilene, Taylor County, TX, (<http://city.abilenetx.com/cemeteryview>), Viewed 3 Aug 2003, Section: City, Block: 15, Lot: 5, Space: 5
15. *Marriage Records of Hopkins County, Texas 1846 - 1880*, Compiled by Mrs. Frances Terry Ingmire, (Self-published - 1979), page 16
16. TX Death Certificate #17842
17. Ibid.
18. TX Death Certificate #41565
19. Texas Department of Health, TX Death Certificate #26406
20. Texas Dept. of Vital Statistics - Death Certificate #50997
21. California Death Index, 1940-1997
22. 1910; Census: Justice Precinct 5, Fisher, TX
23. 1900; Census Place: Justice Precinct 2, Coleman, Texas; Roll: T623 1620; Page: 12A
24. Texas Death Records, Certificate #15653
25. *Social Security Administration. Social Security Death Index, Master File, Provo, Utah: MyFamily.com, Inc.*
26. Texas Department of Health, *Texas Death Certificate*, Certificate #39604
27. Marriage Records of Delta County, Texas
28. Texas Death Records, Certificate #17533
29. 1880 Federal Census - Delta County, TX, E.D. #19, Page 13, Line 33
30. *Tombstone*, Glen Cove Cemetery, Coleman County, Texas
31. Texas Department of Health, Texas Death Certificate, Certificate #46664
32. Texas Department of Health, Texas Death Certificate #31425
33. Texas Department of Health, Texas Death Certificate #44223
34. Texas Department of Health, Texas Death Certificate #6460
35. *Tombstone*, Glen Cove Cemetery next to the grave of M.A. (Arminta) Templeton
36. Texas Death Index, 1903-2000
37. Texas Department of Health, Texas Death Certificate #51618. Listed as Johnphan Young Templeton in the index to Texas Death Records
38. Texas Department of Health, *Texas Death Certificate*, Certificate #78063
39. *Coleman County, TX Marriage Records*, Vol. 5, Page 179
40. Texas Department of Health, *Texas Death Certificate*, Certificate #19923
41. *Coleman County, TX Marriage Records*, Vol. 15, Page 165
42. *Texas Department of Health, Texas Death Certificate*, Certificate #78063
43. (1) Richard Colbert, great grandson., (2) Death Certificate, Texas Death Certificate #5223, Cleburne, Johnson County, TX
44. 1880 Census Place: Precinct 3, Grayson, Texas
45. 1880 Census Place: Precinct 3, Grayson, Texas
46. Death Cert. of Susan C. Templeton Colbert signed by her daughter Mrs. C.P. (Myrtle) Armstrong of Cleburne, TX
47. Ibid (Ref. 1)
48. 1900; Census Place: Precinct 1 4 and 7, Hood, Texas
49. *Illinois Statewide Marriage Index, 1763-1900*, <http://www.sos.state.il.us/GenealogyMWeb/MarriageSearchServlet26> Sept 2004.)
50. 1880 Federal Census - Henry County, MO, Osage Twp, page 472B, ED 181, Village of Brownington
51. *Christian County, IL Cemetery Inscriptions, Vol. III*, Printed by the Decatur Genealogical Society, 1974, page 24
52. 1880 Federal Census - Henry County, MO, Osage Twp, page 472B, ED 181, Village of Brownington
53. Ibid.
54. Ibid.
55. Ibid.
56. Illinois Statewide Death Index, Pre-1916, Vol. A, Certificate 2620, Childbirth
57. Dodd, Jordon & Liahona Research, *Illinois Statewide Marriage Index, 1851-1900*, (Index compiled from county marriage records on microfilm located at the Family History Library, SLC).

58. 1900 Federal Census, Christian County, Illinois, Ricks Twp. ED 18, Sheet 3B, Line 25
59. 1880 Federal Census - Henry County, MO, Osage Twp, page 472B, ED 181, Village of Brownington
60. Source: email, November 28, 2004 from Bobbi Estle researcher for ESTELL family
61. 1900 Federal Census, Christian County, Illinois, ED 20, Sheet 9, line 43, Listed as "Betty" wife of Arthur Crowl
62. Christian County, IL Marriage Records, License #000070, Page 0057
63. 1900 Federal Census, Christian County, Illinois, South Fork Twp. ED 20, Sheet 9A, Page 262
64. 1900 Federal Census, Christian County, Illinois, ED 20, Sheet 9A, Page 262.
65. Ibid.
66. Ibid.
67. (1) 1880 Federal Census - Henry County, MO., (2) 1900 Federal Census, Christian County, Illinois, ED 20, Sheet 11B, Line 55
68. Dodd, Jordon & Liahona Research, *Illinois Statewide Marriage Index, 1851-1900*, (Index compiled from county marriage records on microfilm located at the Family History Library, SLC), Frances Templeton to Harry Mason; also on County Court Records, Film #0987611.
69. 1900 Federal Census, Christian County, Illinois, ED 20, Sheet 11B, Line 54, Henry Mason
70. California Death Index, 1940-1997
71. (1) 1880 Federal Census - Henry County, MO., (2) 1900 Federal Census, Christian County, Illinois, South Fork Twp., ED 20, Sheet 10B, Line 57.)
72. Dodd, Jordon & Liahona Research, *Illinois Statewide Marriage Index, 1851-1900* (Index compiled from county marriage records on microfilm located at the Family History Library, SLC), Christian County, County Court Records, Film #0987611.) 22 Dec 1897 in Christian County, IL (Source: Christian County, Marriage Records, 0173, License #000093
73. 1900 Federal Census, Christian County, Illinois, South Fork, ED 20, Sheet 10B
74. 1910 Federal Census, Kansas, Barber County, Kiowa City, ED 2, Sheet 10A, Line 25
75. 1920 Federal Census of Kansas, Barber County, Kiowa Twp., ED 6, Sheet 5B, Line 91
76. 1920 Federal Census of Kansas, Barber County, Kiowa Twp., ED 6, Sheet 5B, Line 92
77. 1920 Federal Census of Kansas, Barber County, Kiowa Twp., ED 6, Sheet 5B, Line 93
78. *Social Security Administration. Social Security Death Index, Master File, Provo, Utah: MyFamily.com, Inc.*, Death Residence: Auburn, Sangamon, Illinois
79. Christian County Marriage Records, License 000099, Page 206
80. 1910 Federal Census, Illinois, Christian County, South Fork, ED 26, Sheet 6A, Line 17
81. Birth Record, Christian County, IL birth index, Book C.
82. 1910 Federal Census, Illinois, Christian County, South Fork Twp. ED 26, Sheet 6A, Line 19
83. Birth Record, Illinois Index of Birth Records, Vol. D #12341
84. Birth Record, Christian County, Illinois Birth Record, No. 16665
85. Birth Record, Christian County, IL Delayed birth certificate, #16665
86. *Prairie Farmer's Reliable Directory of Farmers & Breeders*, Christian County, IL, Page 116, Published by Prairie Farmer, Chicago, IL
87. 1920 Federal Census of Illinois, Christian County, South Fork, ED 25, Sheet 6A, Line 46
88. *Social Security Administration. Social Security Death Index, Master File, Provo, Utah: MyFamily.com, Inc.*
89. 1920 Federal Census of Illinois, Christian County, South Fork, ED 25, Sheet 6A, Line 47
90. Source: John (Jack) Templeton (son)
91. Birth Record, Illinois Index of Birth Records, Book K
92. 1930 Federal Census of Illinois, Christian County, Curran Twp., ED 84-59, Sheet 8B, Line 77
93. Birth Record, Christian County, Illinois Birth index, Vol. L #114.);
94. (1) *Social Security Administration. Social Security Death Index, Master File, Provo, Utah: MyFamily.com, Inc.*, (2) Nat'l Cemetery Admin, US Veterans Cemeteries, Section: Crema Site 33, National Cemetery Administration, Nationwide Gravesite Locator

International Genealogical Symbols

Mary Harrell-Sesniak
Rootsweb Volunteer

Sooner or later, your research may take you over an ocean, and when it does, be prepared you may receive information formatted differently, and it may contain unfamiliar symbols. Since symbols vary slightly from country to country, I constructed this chart to help identify the more common ones. Some of them are quite creative.

Status / Union	Symbol	Interpretation
Baptized	~ or ~~	Wave or waves (water)
Born or Birth	*	Egg
Born out of wedlock / illegitimate	(*)	Egg not from union
Buried	[] or []	Box or coffin
Buried (alternate)	#box or =B1	Box indicates a coffin
Comes after	>	greater than (e.g., birth, marriage)
Comes before	<	less than
Communion	Y	Communion cup
Died	+	Cross or dagger
Died no further issue / line extinct	++	Line died out after person died
Died stillborn	+*	Cross with an egg
Died in battle	X	Crossed swords
Died in battle from wounds	+X	Cross with crossed swords
Marital status divorced	o/o, % or o o	Rings divided
Marital status married	oo	Two rings
Marital status married (alternate)	&	And or together
Marital status married (South Africa, first or second marriage)	X or XX	And or together
Marital status married, but separated	o o	Two rings separated
Marital status unmarried, common law or illegitimate	o-o	Rings separated
Marital status divorced (South Africa)	÷	Divided union
Marital status engaged	o	Ring
Marital status first or second	I oo or II oo	First or second rings

Previously published in RootsWeb Review 9 July 2008, Vol. 11, No. 17 "Using RootsWeb"
(<http://ftp.rootsweb.ancestry.com/pub/review/2008/0709.html#UsingRootsWeb>)
The author was Mary Harrell (maryh@volunteer.rootsweb.com)-Sesniak
Error! Bookmark not defined.

Surname Index

A

Abbott	123
Abercrombie	126
Abraham	131
Abrahams	131
Adam	115
Adams	117, 118, 131
Addelson	131
Adkins	115
Adkisson	115, 120, 123
Agus	131
Aiton	105
Akin	115
Alexander	117, 119, 121, 123, 128, 131, 134
Algea	131
Aliston	131
Allan	116, 117
Allen	115, 118, 120, 121, 122, 123, 131
Alridge	131
Alvis	115
Amsler	131, 133
Anderson	115, 117, 131
Anglemyer	131
Anstin	131, 134
Aquitera	115
Archer	131
Arlitt	131
Armstrong	115
Arnz	132
Arrington	115
Ashby	132
Asher	132
Atkinson	116
Atwood	118
Awalt	116
Axman	115
Ayers	132
Aynesworth	117

B

Babcock	115
Bacon	109, 115, 132
Baggerly	116, 119
Baggett	118
Bahan	126
Bahn	132
Bailletti	115
Baker	103, 108, 115, 116, 117, 118, 119, 121, 122, 123, 132
Banks	132
Banning	115
Banton	132
Barber	118, 121
Bargsley	115
Barker	132
Barnard	115, 132
Barnes	127, 132
Barnhart	115
Barr	115, 132
Barrick	132
Barron	132
Bartholomew	132
Basse	132
Bastian	132
Bates	132
Battaile	133
Bauer	133
Baughn	133
Baulch	133
Baxter	133
Baylor	117, 121
Beale	117
Beales	133
Bean	133
Beardsley	115
Beck	115, 116
Beckham	133
Bedford	115

Bell.....115, 118, 133, 136
 Belmontes.....133
 Beman.....133
 Bendrat.....131, 133
 Beneger.....115
 Bengener.....120, 131, 133, 138
 Benner.....105
 Bennett.....115, 122, 133
 Beno.....119
 Bernd.....133
 Berrerra.....133
 Berry.....116
 Berryman.....133
 Bertram.....133
 Besserer.....133, 136
 Best.....133
 Bettetino.....133
 Betton.....133
 Biberstein.....133
 Bickler.....133
 Biddle.....116
 Billeisen.....133, 134
 Bills.....141, 142
 Billups.....133
 Binford.....116, 134
 Birk.....116
 Birkner.....134
 Birnbaum.....134
 Birnstiel.....115
 Birzendine.....134
 Bishop.....116, 134, 144
 Bitter.....134
 Bjoerkman.....121
 Black.....133
 Blackburn.....134
 Blair.....116
 Blake.....134
 Blandford.....134
 Bledsoe.....116, 134
 Blessing.....116
 Blessington.....134
 Bley.....134
 Block.....133, 134
 Blocker.....134
 Blomeke.....134
 Blount.....134

Bluhm.....134
 Blumentritt.....134
 Blunn.....134
 Boardman.....134
 Bock.....134
 Boerner.....134
 Bomfort.....134
 Bonner.....116
 Bonnett.....134
 Booth.....116
 Bostick.....116
 Bothe.....134, 140
 Bowen.....116, 118
 Bowers.....134
 Bowles.....116, 117, 121, 134, 135
 Boyce.....116, 121
 Boyd.....108, 130, 135
 Bozeth.....116, 135
 Brackeen.....118, 122
 Bradford.....116, 119, 121, 123
 Brady.....135
 Braha.....116
 Brahl.....135
 Brandon.....116
 Branshaw.....135
 Brass.....135
 Bratton.....116, 118, 119, 120, 122, 135
 Bremond.....118, 120, 135
 Brennan.....135
 Brewer.....116
 Brewster.....135
 Briggs.....116
 Brinckman.....135
 Brisentine.....135
 Brite.....116
 Britt.....116
 Britton.....135
 Broadway.....116
 Brooks.....122, 135
 Brookshire.....116
 Brotze.....135
 Brower.....135
 Brown...115, 116, 117, 118, 119, 120, 121, 122, 123,
 127, 132, 135, 136, 143
 Browne.....116, 136
 Browning.....118, 119

Brownrigg	116, 120
Bruchonneau	136
Brueggerhoff	136
Brush	136
Bryan	117
Bryce	116
Buaas	133, 136
Buass	136
Buchman	117
Buckner	123, 136
Buddington	136
Burch	117
Burden	136
Burdett	117
Burditt	117, 118, 121
Burgess	136
Burland	136
Burleson	117, 121, 123
Burnam	117, 119
Burnett	117
Burnham	109, 136
Burns	136
Burroughs	136
Burrows	121, 122
Burtine	136
Burton	136
Bush	136
Butler	122, 136
Buttery	118
Byles	136
Byrne	117, 133, 136

C

Caifassi	137
Caldwell	105, 115, 116, 118, 121, 122, 131, 137
Calhoun	116, 117, 137
Callaway	137
Cameron	116, 121, 137
Camp	137
Campbell	109, 117, 119, 121, 137
Cannon	117, 137
Caperton	116, 123
Cardenas	137
Cardwell	137
Carleton	117, 137

Carlson	137
Carmichael	137
Carmody	137
Carpenter	137
Carr	117, 137
Carrel	137
Carrington	137, 138
Carroll	117
Carter	117, 138
Cartmell	117
Caruthers	122
Case	117
Casner	117, 123
Cassidey	117
Cassidy	117, 138
Castleman	138
Cater	138
Cawfield	118
Cazenau	120
Cempney	121
Chadwick	138
Chalmers	117, 119, 138
Chandler	137, 138
Chapman	116, 117, 138
Cherryholmes	117
Christian	108, 121, 122, 134, 137, 138, 140
Churchill	138
Cimpelmen	117
Clarke	138
Clarkson	138
Claus	118
Clay	117, 138
Clements	115, 117, 138
Cleveland	117, 118, 119, 139
Cloud	139
Cluff	139
Cockburn	126, 127
Cocks	121
Coffey	139
Cohen	139
Colbert	143
Colbrath	121
Collens	139
Collier	117
Collins	117, 132, 137, 139
Collson	139

Conio	139
Conley	139
Conner	139
Cook	117, 120, 139
Cooke	139
Cooley	139
Coonie	139
Cooper	139
Cope	117, 139
Copeland	139
Copt	118
Corwin	139
Costa	115, 116, 117, 118, 119, 120, 121, 122, 123, 139
Costley	118
Cottingham	118
Cottle	123
Cotton	139
Courtade	139
Courtney	115
Cowling	118
Cox	140
Coyle	140
Cramer	140
Crane	140
Crank	140
Creuzbar	118
Criser	140
Crisman	116, 117, 118, 119, 120, 122
Crismann	119
Cron	140
Crook	127, 128
Crooke	128
Crosby	116, 118, 140
Crowe	143
Crowl	143
Cruz	140
Culberson	140
Cullen	140
Culmore	140
Cummings	116, 117, 118, 120, 121, 140
Cunningham	135, 140
Curtis	140
Cushman	140
Cushney	118, 119, 122
Custard	118

D

Dallas	126, 127, 128
Dancer	115
Dancy	118
Darter	118
Daugherty	123
Davidson	117, 118
Davis	118, 119, 121
Dean	118
Deats	118
Dechard	118
Denton	140
Dieterich	118
Dietmir	123
Dignan	118
Dilcher	118
Dixon	118
Dodd	118
Doerk	118
Dominick	118
Doncher	118
Donelson	121
Donnan	109
Doom	121, 123
Doxey	118, 119, 120
Driskill	118
Duce	118
Duffau	118
Duncan	119
Dunlap	123
Durst	118
Duty	116, 117, 120, 123

E

Eaglestone	127
Eanes	120
Edmiston	118
Edmondson	121
Edwards	116, 119, 122
Edwin	122
Elledge	119
Elliott	118, 123
Ellis	106, 122, 123
English	109, 136, 137

Esser.....	134
Estell.....	143
Evans.....	118, 120
Ey.....	115

F

Falkenberg.....	106
Farmer.....	105
Farrer.....	118
Faust.....	121
Faxal.....	118
Feding.....	120
Fellman.....	119
Ferguson.....	117, 119, 122
Ficklin.....	131, 132
Fields.....	136
Fink.....	119
Finnin.....	115, 117
Fisk.....	119, 121, 123
Fleet.....	119
Fontaine.....	116, 117, 118, 119, 120, 121, 122, 123
Forbes.....	116, 117, 118, 121, 122, 123
Ford.....	116, 119, 134
Forehand.....	122
Foster.....	117, 118, 119, 120, 121, 122, 123
Foutrel.....	132
Fowler.....	117
Fox.....	138
Freestone.....	115
Frettwell.....	119
Friend.....	115, 116, 117, 119, 120, 122, 123
Fry.....	117, 121

G

Galloway.....	128
Gamble.....	119, 120
Gans.....	134
Garcia.....	105
Gardner.....	119
Garrett.....	119
Gatlin.....	119
Gault.....	119
Gaynor.....	133
George.....	117, 119

Gerber.....	106
Germany.....	119
Gilbreth.....	119
Giles.....	115, 117
Gilleland.....	116
Gillette.....	119, 123
Gilliland.....	118, 122
Glascok.....	118, 119
Glass.....	119
Glasscock.....	119, 139, 140
Glover.....	115, 116, 119
Goforth.....	119
Goldmann.....	110
Gooch.....	120
Graves.....	115, 116, 121
Gray.....	105
Green.....	115, 119
Gregg.....	117, 119
Gregor.....	104
Griffin.....	119
Griffith.....	104
Grooms.....	119, 121
Grumbles.....	119
Guilmatt.....	119
Gurley.....	119
Gwin.....	119
Gwinn.....	119

H

Hadley.....	119
Hague.....	119
Hall.....	117, 119, 123, 138
Hamilton.....	120
Hammock.....	120
Hancock.....	120
Hardiman.....	120
Harman.....	127
Harrell.....	108, 115, 118, 147
Harris.....	120, 122, 123, 124
Harrison.....	120
Hawkins.....	133
Haynie.....	120, 121
Headspeth.....	136
Hearn.....	120
Heath.....	120

Hector	120
Heileman	134
Hellman	134
Hemphill	120
Henricks	132, 134, 139
Henry	120
Hersen	116
Hervey.....	120
Herwig.....	120
Hickey	139
Hickman	104
Hill.....	103, 116, 120
Hinemann.....	120
Hofhientz	120
Hofmann.....	120
Hoge	121
Holden	120
Holdsworth	122
Holeman	120
Holiday.....	115, 122
Hollan	117
Holliday.....	115
Holman	120
Hopkin	118
Hopkins	115, 120, 122
Hornberger	120
Horne.....	118, 120
Hornsby	116, 117, 120
Horst	119
Hotchkiss.....	115, 116, 120
Houssoux.....	120
Huck	106
Hudnall.....	111
Hudson	115, 120
Hughes	120
Hull	135
Humphreys.....	120
Hunt	120, 143
Hurd.....	137, 138
Hutchison	120
Hutto.....	120
Hyde.....	121

I

Inge.....	121
-----------	-----

Isom.....	121
-----------	-----

J

Jackson	121
James	120, 121
Jeffradge	121
Jennings	116, 117
Johanson	121
Johns	108, 121, 138
Johnson	105, 121, 122, 123
Johnston.....	121
Jones	115, 118, 119, 121, 123, 134, 138
Jonson	121
Joy.....	123
Juartuche	115

K

Kane	121, 135
Keenan.....	121
Keller	106
Kelly	121
Kerr.....	115, 117, 123
Kersinger.....	119
King	121
Kirchner.....	121
Kirk	118
Kluge	132, 136, 139
Knight	121
Kolb	121
Krieger.....	121
Kuykendall	121, 123

L

Lafferty	123
Lancaster	116, 122
Land.....	121
Lane.....	120, 121
Lankford	105
Laremore.....	119
Laughlin.....	115, 118, 121
Lawrence.....	121, 138
Leach.....	121
Lee	117, 121
Legett	120

Lembert	119
Lewis.....	115, 117, 120, 121
Linaweaver	121
Lipscomb.....	121
Littlepage	121
Livingston	115
Logan.....	117, 120
Lohmann	120, 121
Long.....	116, 117, 118, 120, 122, 123, 139, 140
Loomis.....	134, 137, 138, 140
Lotta	121, 122
Love	122
Lowry	108, 109
Luckett.....	117
Lytle	122

M

Mabry.....	122
MacNamara	122
Maguet	122
Main.....	128
Mair	132
Malone	116, 122
Mann	115, 119, 120, 121, 122
Manor	116, 122
March	124
Marshall	122
Martin	119, 121, 122, 123, 127, 136, 137
Mason.....	143
Masterson	120
Matt	122
Matthews.....	117, 122, 123
Mauthe	119, 122
Mays	123
McAnelly	122
McCall.....	119, 120, 121, 138
McCarthy	118
McCarty	117
McCleskey	123
McCory.....	121
McCuiston	122
McCutcheon	121
McDaniel	121, 122
McDermitt	122
McDonald	122

McDonnell	122
McDuff.....	122
McFadden	122
McFarland	122
McGuire	122
McIntosh	122
McIntyre.....	122
McKean	122
McKenzie.....	116
McKinstry	120
McLaughlin.....	110
McLauren	122
McLaurin	122
McLemore	116
Medlin.....	123
Meeks.....	123
Melasky	108, 139
Metz.....	116, 122, 138
Meyer.....	121, 122, 131
Meyers	120
Miles	123
Miller.....	105, 121, 123, 136, 140
Millett	131, 136, 137, 140
Millican	123
Mills	123
Miner	120, 123
Minielle.....	123
Minor	119
Mitchell.....	135
Moody.....	116
Moore	117, 119, 123, 132
Morgan	123
Morris	121, 123
Morrow	123
Moss	123
Mouson	123
Mousson.....	123
Mulky	123
Myers.....	123, 141, 142

N

Naghten.....	117
Nash	123
Nebgen	123
Needham.....	123

Neher	123
Nelson	123, 136
Newman	122
Nicholson	123
Nowlin	118

O

O'Connor	119
Odin	115
Ogle	121
O'Neal	132
Oram	127
Orgain	122
Orr	126
Ostmons	120
Owens	123

P

Paggi	132
Parrish	104
Pauley	143
Pease	110
Perry	122, 140
Peyton	122
Pfleger	116
Pfouts	105
Phillips	116, 117, 118, 120, 122
Piper	120, 122
Pitts	122
Polk	128
Pollack	120
Powers	139
Preece	120
Puckett	119, 120, 121, 123

Q

Quigley	122
---------------	-----

R

Radkey	131, 132, 133, 135
Raega	118
Raymond	132
Reed	127

Reid	127
Reiley	119
Renard	122
Renick	121, 122
Renz	131
Richardson	123
Richardson	118, 120
Richeson	120
Riddle	126, 128
Riggins	131, 137
Riggle	119
Risher	138, 140
Rissman	115
Robarts	134
Robertson	119, 124
Robinson	108, 136
Rogers	119, 120
Roid	117
Rollins	120
Roth	106, 107
Rottenstein	115
Rottenstine	121
Rowe	116, 118, 122
Russel	109
Russell	103, 116, 121
Rust	117, 119

S

Sampson	132, 134, 139
Savoy	123
Sawyer	131, 132
Schubert	133, 136
Scott	116, 117, 120, 122
Selkirk	122
Sesniak	147
Shaw	119
Sheehan	117, 122
Shelley	108, 110
Shelp	115
Sherman	116
Shields	115
Smalley	123
Smith	109, 115, 116, 117, 118, 119, 120, 121, 122, 123, 128, 132, 137, 140
Smithwick	116

Smyth	115
Sneed	108, 110, 116, 123
Snoddy.....	120
Soles	115
Sory.....	124
Soules.....	119
South	115, 120
Spears	117
Spencer	119, 123
Spillers	106
Stanfield	118
Stanhope.....	116
Stanley.....	117, 123
Stelfox.....	134, 138
Steussy.....	105
Stewart	109
Stone	119
Stuart.....	132
Sutor	138
Swenstone.....	115
Swisher.....	121, 135

T

Taliaferro	116, 119, 121, 122, 123
Tannehill.....	117, 122
Tannihill	123
Tatum	115
Taylor	144
Templeton	141, 142, 143, 144
Tetar	116
Theile	121
Thomas. 105, 115, 116, 117, 118, 119, 120, 121, 122, 123, 127, 132, 134	
Thompson	122, 140
Thomspon	135, 138
Thrall.....	118, 119, 121
Tibbitt.....	127
Tips	108, 132
Triplett	123

V

Vail.....	104
Vann	117

W

Walker	116
Wallace.....	105, 117, 119, 132, 134
Walton	115, 118
Wansley.....	120
Wanslow	123
Ward	118, 119, 120, 121, 122, 123
Warren.....	118, 120
Washington	118, 120
Watson	120
Wells	117, 138
Wesson.....	116, 117, 118, 120
West.....	108, 116, 119
Whatley.....	119
White	119, 123
Whited	101
Wilburn	118
Wilhope	116
Williams.....	120
Williamson.....	118
Wilson	121
Wolfe	120
Woody.....	119
Wooten	108
Worldy.....	121
Worrell	119
Wright	104, 118

Y

Yager.....	120
Yates.....	143
Young.....	104, 121

Z

Zenner	118
Ziller	131, 139
Zimmerman.....	122
Ziveley	116
Zivley.....	116, 119

AUSTIN GENEALOGICAL SOCIETY

P.O. BOX 10010, AUSTIN, TEXAS 78766-1010

www.AustinTxGenSoc.org

PURPOSE Austin Genealogical Society was organized in 1960 as a not-for-profit corporation chartered by the State of Texas. Its purposes are to collect and preserve genealogical and historical information about the people of Texas, particularly pertaining to the City of Austin and to Travis and surrounding counties; to instruct and assist members in genealogical research; and to publish public and private records of genealogical interest. In addition, the AGS supports the Texas State Library's Genealogical Collection and Austin Public Library's Austin History Center by donations of books and other genealogical material. Gifts and bequests to AGS are tax-deductible to the full extent permitted by law.

MEMBERSHIP is open to all upon payment of annual dues. Classes: Individual: \$20; Family (two in the same household): \$30; Patron of AGS: \$100; Lifetime: \$500 (\$300 if over age 65). All classes entitle one copy of each issue of the Quarterly and the monthly Newsletter, as well as two pages apiece (a total of four pages for Family or higher whether one or two people submit listings) in the Ancestor Listing issue, the June Quarterly. **After July 1, dues are \$10 for the balance of the year**, but you will receive only the publications produced after the date you join. Membership includes a copy the annual Membership Directory, which is published each spring.

DUES FOR EXISTING MEMBERS are payable on or before January 1 of each year for the ensuing year. If dues are not received by February 1, the name must be dropped from the mailing list. If membership is reinstated later and Quarterlies and Newsletters have to be mailed individually, postage must be charged. (Back Quarterly issues are supplied only if available). Send dues payments to **AGS Treasurer, P.O. Box 10010, Austin, Texas 78766-1010**.

MEETINGS of the general membership begin at 7:15 p.m. on the fourth Tuesday of each month except December. Members are encouraged to come at 6:30 p.m. Meeting Place: **Highland Park Baptist Church, 5206 Balcones Dr.** Take Northland (RR 2222) exit off Loop 1 (Mopac). Go west one block to Balcones Dr., then left 12 blocks. The church and parking lot are on right. Visitors are always welcome. The Board of Directors meets at 6 p.m.

CHECK RETURN POLICY Members and other payees must pay AGS the cost of any returned check (currently \$5) over and above the charge their bank may impose.

AGS QUARTERLY is issued about the middle of

March, June, September and November. Contributions are always welcome, subject to editing for style and length. Contributor is completely responsible for accuracy and any copyright infringement. AGS assumes no responsibility for content of submitted material. Some Quarterly articles are posted to our Website at www.AustinTxGenSoc.org.

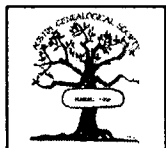
ANCESTOR LISTING PAGES for the June issue of the Quarterly must reach the Editor at P. O. Box 10010, Austin, Texas 78766-1010, or quarterly@AustinTxGenSoc.org by May 20, preferably by electronic means, either in an e-mail or as an attachment to an e-mail. When an electronic version is not possible, typing, handwriting or printing must be black and legible. Months must be spelled or abbreviated, not in figures. Show dates in accepted genealogical style: day, month. Leave 1-inch margins at both sides and at top and bottom, and hand-number pages on the back of each page. Carefully check horizontal pages (reading in the 11-inch direction) so that one-inch margins are on top, bottom and both sides so no information is lost in stapling. No 8 1/2 x 14 sheets, please. You may submit lineage or family group charts, ahnentafels, narratives, memoirs, letters, cemetery inscriptions, Bible records, census data, queries or a combination of material, just so it is not under copyright. Proofread your material for accuracy and clarity so we will not publish faulty or incorrect data. Consult a recent June AGS Quarterly for suggestions.

Remember, individual membership secures two facing pages, and family or higher membership allows you four pages.

AGS QUARTERLY DEADLINES: 20th of February, May, August and October. Send material to AGS Quarterly, P. O. Box 10010, Austin, Texas 78766-1010 or email quarterly@AustinTxGenSoc.org.

AUSTIN GENEALOGICAL SOCIETY
PO Box 10010
Austin Texas 78766 -1010

Address Service Requested



Vol. 49, No. 3/4
December 2008

NON-PROFIT ORG.

U.S.POSTAGE PAID
Austin, Texas
PERMIT NO. 2614