

# Austin Genealogical Society



## Quarterly

---

Volume XLII, Number 1

March 2001

---

### CONTENTS

Comments .....	1
AGS By-Laws Revised .....	4
West Texas Pioneers .....	8
Happy Hunting Ground (Queries).....	18
McLaughlin Family Summaries (concluded).....	19
TSGS Award Letter .....	23
Book Reviews	
<i>20<sup>th</sup> Century Henry County, Georgia</i> .....	24
<i>Descendants of Bartholomew Stovall [1655-1722]</i> .....	24
House, Read and Brice Genealogies .....	25
Davidson & Littlepage Cemetery and Genealogy.....	39
Gray Golden Memorial .....	45
Membership Application .....	47
Name Index for First Quarter.....	49



PUBLISHED FOUR TIMES PER YEAR BY THE AUSTIN GENEALOGICAL SOCIETY  
THIS IS OUR FORTY-SECOND YEAR OF PUBLICATION

NEXT ISSUE IS OUR MEMBERS' QUARTERLY  
SEE PAGE 3



## AUSTIN GENEALOGICAL SOCIETY Officers 2001

Marilyn M. Henley (378-4735; [marilyn@ahenley.com](mailto:marilyn@ahenley.com))  
Phillip W. Roberts, Sr. (258-1987; [probertssr@aol.com](mailto:probertssr@aol.com))  
Carol Dahnke Lutz (345-1422; [roy.carol.lz@att.net](mailto:roy.carol.lz@att.net))  
Charles Locklin (343-0782; [locklin@ccsi.com](mailto:locklin@ccsi.com))  
Lorrie Foster Henderson (451-2312)  
Karel Danford (512-321-2716; [kdan2@aol.com](mailto:kdan2@aol.com))

President  
First Vice-President  
Second Vice-President/Pgm.  
Treasurer  
Corresponding Secretary  
Recording Secretary

### BOARD OF DIRECTORS

#### 2000-2001

Yvonne J. Beever  
Beryl Bergschneider  
Leanna Bergschneider  
Marilyn Maniscalco Henley  
James Hollas  
Anna Houston Price  
Phillip W. Roberts, Sr.  
Jean Shroyer  
Jean Halden Walker  
Wilena D. Kennerly Young

#### 2001-2002

Karel Danford  
Ginger Goetze  
Lorrie Foster Henderson  
Bill Koehler  
Charles Locklin  
Carol Dahnke Lutz  
Alana Mallard  
Col. Putnam Monroe  
Wynnell Emery Noelke  
Betsy Tyson

NOTE: BOARD MEETS AT 6:15 p.m. FOURTH TUESDAYS immediately before regular Society meeting.

### COMMITTEE CHAIRS-2001

AGS Newsletter Editor	Wilena Young	AGS Quarterly Editor	Bill Koehler
Quarterlies Custodians:	Beryl & Leanna Bergschneider	Members' Handbook	Carol Lutz
		2001 Seminar:	Marilyn Henley and Jean Shroyer
Book Acquisitions:	Alana Mallard		
Library Liaison:	Jean Shroyer	Publicity:	Anna Price
Hospitality:	Edna Youngblood	Programs:	Carol Lutz
AGSQ Review Editor:	Helen Rugeley	Pub. Mail. Coordinator:	James Hollas
Audit:	James L. Cooper	WEB Mistress:	Yvonne Beever
Travis Co. Cemeteries:	Jean Shroyer	Member Surname List (Web):	Betsy Tyson
Genealogical Records Coordinator: Alana Mallard			

The AUSTIN GENEALOGICAL SOCIETY QUARTERLY is published four times per year in the months of March, June, September and November.

### MAILING ADDRESSES:

AUSTIN GENEALOGICAL SOCIETY has specific addresses for certain purposes. To save time and trouble for yourself as well as for us, please use the appropriate address. See inside back cover for further details. THANK YOU!

**EXCHANGE QUARTERLIES**-- Send quarterlies and correspondence about them (such as change of address or failure to receive yours by the 10th of April, July, October or December) to **TEXAS STATE LIBRARY, Tech Services S.S., Box 12927, Austin TX 78711.**

**CHECKS AND BILLS**-- Dues, seminar reservations, orders for our Special Publications, memorial gifts, other financial matters: **AGS Treasurer, 7704 Evaline Lane, Austin TX 78745-6752.**

**AGS QUARTERLY**-- Send material for and correspondence about quarterly to **AGS Quarterly, 4500 Hyridge Drive, Austin TX 78759-8054.** EXCEPTION!: **QUERIES** should be sent to **Queries Editor, 5722 Highland Hills Drive, Austin TX 78731.**

**PAST ISSUES OF AGS QUARTERLY**: Inquiries about availability and cost should be addressed to the **AGS Quarterly Custodian, 4304 Lostridge Drive, Austin TX 78731.**

**MEMBERSHIP INQUIRIES**: Address inquiries to the **AGS Membership Chairman, 10003 Mandeville Circle, Austin TX 78750-2815.** (Check inside back cover for membership dues, etc.)

**GENERAL CORRESPONDENCE** concerning Society matters goes to **AUSTIN GENEALOGICAL SOCIETY, P.O. Box 1507, Austin TX 78767-1507.**

Please see inside back cover for further Society information.

# The Austin Genealogical Society Quarterly

Volume XLII, Number 1

March 2001

—We can hear if we listen the words they impart  
through their blood in our veins and their voice in our heart.

—Unknown

## Comments

### NEW——

As we look around, everything is new: a new year, century, millennium, administration, even the weather is giving us a new look after so much dry, and, yes, a new Volume of the Quarterly, our 42nd. We hope they will all be very good.

AGS has some new Board members, officers and committee chairs. We welcome Karel Danford, Carol Lutz, Wynnne Noelke and Betsy Tyson as new Board members, and Putnam Monroe, who rejoins the Board after a much-needed rest. Also, Anna Price was named to the Board to fill Betty Treder's term.

At a special meeting of the Board on 9 December, it was happily able to persuade Marilyn Henley to succeed herself as President. She is giving us some wonderful leadership, and we are glad she agreed to continue the good work she has set in motion. Phil Roberts has become First Vice-President, new Board members Carol Lutz and Darel Danford will handle the Second Vice-President-Programs and Treasurer's chores, respectively, and Charles Locklin steps in as Treasurer. Lorrie Henderson will continue to serve as Corresponding Secretary (she is so adept at it). All-in-all we Board by-standers feel it is a top-notch team. Congratulations to all.

### AGS BY-LAWS HAVE BEEN REVISED

At the January 2001 regular meeting of the membership, a complete revision of the Austin Genealogical Society By-laws was voted into effect. This was the culmination of work that initiated last September when President Henley appointed a special committee chaired by Phil Roberts to review the existing by-laws and recommend any changed deemed appropriate. The complete new By-laws now in effect are printed following these Comments. The purpose of this revision is not to change our Society in any way, but is mainly to update the rules to the current time frame and to reflect current needs in providing adequate genealogical support to the community.

(Continued on next page)

**PUBLICATION TITLE: AUSTIN GENEALOGICAL SOCIETY QUARTERLY**

**ISSUE NUMBER 1(2001) ISSUE DATE: 15 MAR 2001**

**FREQUENCY: FOUR ISSUES PER YEAR**

**ORGANIZATION NAME AND ADDRESS:**

**AUSTIN GENEALOGICAL SOCIETY**

**C/O EDITOR, 4500 HYRIDGE DRIVE**

**AUSTIN TX 78759-8054**

**INTERNET WEB SITE: WWW.MAIN.ORG/AGS/**

**AGS IS A NOT-FOR-PROFIT ORGANIZATION CHARTERED BY THE STATE OF TEXAS**

**UNLESS OTHERWISE MENTIONED, MATERIAL HEREIN IS COPYRIGHTED BY AUSTIN GENEALOGICAL SOCIETY**

(Cont'd from previous page)

**NEWS FROM DISTRICT 13, TEXAS STATE GENEALOGICAL SOCIETY**

Jean Walker, our valued AGS representative to the TSGS, has given us an update on current activities of interest to members:

The TSGS Board voted to raise dues for individual members to \$20 for year 2002. The increased costs for paper, printing and collecting are rising so that at current dues, *Stirpes*, the TSGS quarterly would be printing at a loss, something which couldn't continue. *Stirpes* editor Frances Pryor in turn wants your queries, Bible information, journals and other data of historical and genealogical value. She principally wants Texas area material.

Don't forget our Fall TSGS Conferences. We will meet in Tyler this year, in Galveston in 2002 and Texarkana in 2003. Those local groups are already working on arrangements, programs, etc.

Vol. I of *Texas First Families* is available with index. Order from **Wanda Donaldson, 3219 Meadow Oaks Drive, Temple TX 76502-1752**. Copies are \$41.00 prepaid; Index is \$13.83.

Jean can be reached at [texasjean@hotmail.com](mailto:texasjean@hotmail.com) or 512-472-2625 for further information. Thanks, Jean, for this information.

**GRAY GOLDEN MEMORIAL RESTATEMENT**

Gray Golden was the golden name in Austin genealogy. As the printout from an issue of the Austin American Statesman on the next page indicates, she helped genealogy to get started in this area as an avocation and a profession. Having been an attendee at one of her seminars this editor can attest to her extraordinary capabilities as a genealogist, speaker and person. After her death AGS established the Gray Golden Memorial Fund in her memory. Anyone wishing to make a contribution, either monetary or in the form of a book, to the Genealogy Collection, Texas State Library, in honor or memory of another individual, is invited to do so through the Golden Fund. A contribution form for this purpose is included at the back of this issue and we request that you fill out and include the form when making a contribution.

**NEW MEMBERS ALWAYS WELCOMED**

Although the 2001 Membership Handbook is being printed, this doesn't mean you are not welcome to join AGS if not yet a member. An application form is also included at the back of this issue for your convenience; please fill it in and remit as per its instructions.

**CONCERNING THE FEDERATION OF GENEALOGICAL SOCIETIES**

There are two genealogical societies of national scope and import in the U.S.; the National Genealogical Society and the Federation of Genealogical Societies. The NGS tends toward individual memberships, certification, professionalism, etc, while the FGS emphasizes the importance of genealogical activity at the local society level. Both are very good. The FGS accepts membership from local societies and AGS has just voted to join that group. We will be bringing more FGS news in coming months.

Meanwhile it is good to know the FGS has an area office right here in Austin. It is operated by Madilyn Coen Crane in her home, and she can be reached at 512-336-2735 or at [fgs-office@fgs.org](mailto:fgs-office@fgs.org). Incidentally, Madilyn is looking for part-time help: flexible hours, computer skills, etc; located near US183 and Anderson Mill Rd. Call Madilyn if you are interested.

**RE MAGGIE LAMBETH BOOKS**

We recently received a catalog from Maggie Lambeth, Rare Books, Maps & Prints, P.O. Box 1600, Blanco TX 78606, 830-833-5252, listing over 360 rare publications on Texas and Texana. The listing is quite extensive; anyone needing a copy of an old or out-of-print book on Texas may want to contact her.

## CEMETERY PROJECT AWARD

On Page 23 we copy a letter received from Yvonne Perkins, TSGS president, confirming AGS' reception of a \$300 matching grant from TSGS for its active Travis County Cemeteries project. This is a signal honor; we understand it is the first such award made by TSGS and a great tribute to Jean Shroyer and the entire committee. Congratulations!

No cemeteries are reported in this issue; winter weather has hindered data acquisition some, but work is continuing and we expect to bring more information shortly.

## WALKER COUNTY GENEALOGY FAIR

On 23 June 2001 the Walker County Genealogical Society is presenting the "first ever" Texas Genealogy and Family History Fair at the Fair Grounds in Huntsville. Contact 936-295-5551 or [www.DickensonResearch.com/wegen.htm](http://www.DickensonResearch.com/wegen.htm) for more information.

## REQUIREMENTS FOR ANCESTOR LISTING PAGES

### Reminder: Next Issue is June Members' Ancestor Listing Pages

We want to remind members of AGS that the upcoming June issue is mainly devoted to presenting members' submissions covering their genealogical research and interests. Because the number of new members (and submissions) is growing, it becomes necessary to re-state the Quarterly requirements for such submissions:

1. Members are limited to a maximum of two full pages for each individual membership (\$20) or four full pages for each family (\$30) or higher membership category. Check your membership category before you submit. If more than the permitted number of pages are sent, the Editor will use his discretion as to which excess pages are omitted. Material should be on 8 1/2 x 11 size paper.
2. Pages may be handwritten, typed, or computer-generated but must be as black as possible and legible. The copy submitted will have to be reproduced at least twice before printing and at each step some quality is lost. The Editor assumes no responsibility for lack of readability if this requirement is not met. Please also retain a 1-inch margin on all sides of each sheet to allow for header, footer and binding areas.
3. The material should be of the submitter's choosing but preferentially should be genealogical or historical in nature. The submitter is completely responsible for content, accuracy and freedom from copyright infringement. AGS assumes no liability for these matters.
4. Months should be spelled or abbreviated; no numbers should be used. Dates should be in genealogical format: DAY, MONTH, YEAR.. The name and address of the submitter should be on each page of material. The Editor reserves the right to format and/or edit the material so that it will be printer-ready.
5. **Material should be sent to the Editor at 4500 Hyridge Drive, Austin TX 78759 no later than 10 May 2001.**

Please don't let these requirements keep you from sending in material. You probably already are preparing your information in much the requested fashion. Thanks both for your consideration and for the material which you will be sending.

The Editor

## BYLAWS OF THE AUSTIN GENEALOGICAL SOCIETY

(Accepted by Membership Vote 23 January 2001)

### ARTICLE I Name and Purpose

#### Section 1: Name

The Society will be called the "AUSTIN GENEALOGICAL SOCIETY". For the purposes of these by-laws, the acronym "AGS" may be used interchangeably with Austin Genealogical Society.

#### Section: 2 Purpose

The purposes for which this Society is organized are:

A.) To investigate, collect, record, publish, and deposit in libraries and archives, the genealogical and historical materials of Texas, with particular focus on items pertaining to the City of Austin, Travis County, and adjoining counties.

B.) To educate its members and the general public in the use of these and other reference materials, in preparing, and publishing genealogical materials and family lineage.

C.) To support the Texas State Library Genealogy Collection by securing and donating books, microfilmed records, and other items or equipment not normally provided for in the State budget.

### ARTICLE II

#### Membership, Election, Voting, and Dues

##### Section 1: Eligibility for Membership

Any person whose stated interests are consistent with the purposes of this Society is acceptable to be a member.

##### Section 2: Elections

###### A.) Board

The names of the ten (10) members selected by the nominating committee for the Board of Directors shall be submitted to the Society at the September meeting each year. Nominations may also be made from the floor before the names are voted on. The nominees shall be voted on at the October meeting, and those elected will serve two (2) years beginning the following January 1st. If there are more than ten (10) nominees, voting will be by ballot, with the ten (10) nominees receiving the most votes declared elected.

###### B.) Officers

All officers of the Society shall, as provided in Article III, Section 2, Officers, be elected annually between the October meeting and the following December 31<sup>st</sup>, for a term of one year, and installed at the January meeting following the annual reports of the officers. Officers may succeed themselves.

##### Section 3. Voting

Each member whose dues are current is entitled to vote.

##### Section 4: Dues

A) The amount of dues for the members of this Society shall be determined by the Board of Directors not later than November 30<sup>th</sup> each year for the following year. Dues are payable in advance for the calendar year beginning January 1st. Members who fail to pay current year's dues by February 1<sup>st</sup> will be dropped from the membership roll.

B.) Half-year memberships are available for new members. Half-year memberships are 1/2 of single member rate and are payable on and after 1 July of the current year. Only publications produced after that date will be provided to the half-year membership.

### ARTICLE III Officers and Committees

#### Section 1: Governing Body

The governing body of this Society shall be a Board of Directors, composed of 20 members. Their term of office shall be two (2) years, beginning the January 1<sup>st</sup> following election. The term of ten (10) members of the Board of Directors shall expire each year.

**Section 2: Officers**

The sitting board as of January 1<sup>st</sup> shall from their number elect a President; First Vice-President; Second Vice-President; Recording Secretary; Corresponding Secretary and Treasurer. The six (6) officers listed above in this Section shall form the Executive Committee.

**Section 3: Appointments**

The President shall appoint the Handbook Editor; Newsletter Editor; Publications Mailing Coordinator; Quarterly Editor; Seminar Coordinator and Webmaster.

**Section 4: Board Members**

The Board of Directors shall meet monthly, except December and the seminar month. The Executive Committee shall meet at the call of the President, and shall be responsible for conduct of the Society's business between meeting of the Board of Directors.

**Section 5: Standing Committees**

The President may appoint Standing or Special Committees as needed.

**Section 6: Nominating Committee**

At the July meeting of each year, a Nominating Committee shall be selected in the following manner: Two members elected by the Board of Directors, one member appointed by the President, and two members elected by the membership. This committee shall recommend to the Society at the September meeting each year the ten (10) nominees for the Board of Directors to be elected at the October meeting.

**Section 7: Vacancies**

The Board of Directors shall, in the event of a board vacancy, fill that vacancy by appointment at its next meeting following the creation of the vacancy. Said appointees shall serve out the unexpired term of the director replaced. Should the board vacancy also be an officer, the board will replace the officer per Article III, Section 2.

**ARTICLE IV**  
Meetings**Section 1: Society**

Regular meetings of the Society shall be held on such dates and at such time and places as may be determined by the Board of Directors. All meetings of AGS are open to its members, unless otherwise announced by the Board.

**Section 2: Special Meetings**

The President may call Special Meetings as deemed necessary.

**Section 3: Annual Meeting**

The January Meeting shall be the Annual Meeting.

**Section 4: Quorum**

The members present at any general or board meeting of the Society shall constitute a quorum, provided it is a stated meeting or one that has been properly called.

**ARTICLE V**  
Duties**Section 1: Officers, Committees, and Coordinators**

The officers, committees, and coordinators shall perform the duties prescribed in these By-laws.

**Section 2 : President**

The President shall preside at all meetings of the Society, Executive Committee, and the Board of Directors. He/she shall be the Chief Executive Officer of the Society, appoint all committees except the Nominating Committee, and be an ex-officio member of all committees except the Nominating Committee.

**Section 3: First Vice-President**

The First Vice-President shall in the absence of the President, perform the duties pertaining to that office, act as the parliamentarian of the Society, and perform other duties as assigned by the President and Board of Directors.

**Section 4: Second Vice-President**

The Second Vice-President shall preside in the absence of both the President and the First Vice-President, and shall also serve as Program Coordinator.

**Section 5: Recording Secretary**

The Recording Secretary shall keep a record of the proceedings of the meetings of the Society and of the Board; notify officers of their election and committees of their appointment; and shall have custody of all papers and records of the Society not otherwise provided for. The Recording Secretary shall maintain these papers and records open for inspection at any appropriate time, in the presence of the Secretary, by any member of the Society. In the absence of the President and Vice-Presidents, the Recording Secretary shall call the meeting to order and preside until a chairman pro-tem is elected. At the expiration of the Recording Secretary's term of office the papers and records for the immediate past year shall be turned over to his/her successor, and all other papers and records in his/her possession as Recording Secretary shall be placed in the Austin-Travis County Collection in the Austin History Center.

**Section 6: Corresponding Secretary**

The Corresponding Secretary shall be responsible for retrieving the Society's mail from the Post Office once a week and examining it for subject matter, distribution to the appropriate Board member, and executing such correspondence as may be requested by the President, Executive Committee, or Board of Directors of the Society. He/she shall maintain custody of all such letters.

**Section 7: Treasurer**

The Treasurer shall receive all funds of the Society and shall deposit said funds in such bank or banks as may be designated by the Board of Directors. The Treasurer shall disburse these funds, as directed by the Board of Directors, provided that no check for over one thousand dollars (\$1,000.00) shall be written without the signatures of both the President, or Acting President, and the Treasurer. The Treasurer is responsible for providing new membership information to both the Newsletter Editor and Mailing Coordinator in a timely fashion. The Treasurer shall present a monthly financial report at each regular meeting, and an annual report at the Annual Meeting in January.

**Section 8: Handbook Editor**

The Handbook Editor is responsible for coordinating all activities required for the production of the AGS Membership Handbook. This includes compiling information received from other officers and members, reviewing the information for completeness and accuracy and meeting all printing deadlines for the March mailing.

**Section 9: Newsletter Editor**

The Newsletter Editor shall prepare a newsletter to be mailed to all members prior to the monthly meetings, notifying them of the time, place of the meeting, and the program planned, and any other information deemed pertinent.

**Section 10: Publications Mailing Coordinator**

The Publications Mailing Coordinator shall maintain a current Society mailing list, making such additions, deletions and changes as provided by the Treasurer. He/she shall furnish such changes to the printer of the AGS Quarterly. In addition, he/she shall perform all mailing activities required for the mailing of the monthly newsletter and the Membership Handbook.

**Section 11 Quarterly Editor**

The Editor of the Austin Genealogical Society Quarterly shall issue such journals four times a year unless otherwise directed by the Board.

**Section 12: Seminar Coordinator**

The Seminar Coordinator shall be responsible for planning, organizing, and conducting the annual seminar, including appointing such sub-committees or persons as deemed necessary.

**Section 13: Webmaster**

The AGS Webmaster shall have the responsibility of managing the AGS website, updating information as provided by the Board, and maintaining such accurate data, links, and information as is technically feasible.

**ARTICLE VI  
Amendments**

These by-laws may be amended at any regular meeting by the majority vote of the members present, provided the amendment has been presented in writing at the previous regular meeting and a statement of the proposed change or changes mailed to the members before the regular meeting at which the amendment is to be voted on.

**ARTICLE VII  
Audits****Section 1: Appointment of Committee**

The President shall, with Board approval, appoint annually an Audit Committee.

**Section 2: Reports**

Subsequent to the Treasurer's annual report in January, but prior to the February meeting of the Board and Society,



the Audit Committee shall audit and prepare a written report to be presented at said meeting. The Audit Committee's report will be included in the March issue of the AGS Quarterly.

#### **ARTICLE VIII** Complaint Process

##### **Section 1: Filing**

Any member may file a complaint in writing with the Board.

##### **Section 2: Charges**

The complaint should contain the details of the specific complaint.

##### **Section 3: Investigation**

The Board shall select a committee of impartial Society members to review the complaint and to report its findings to the board.

##### **Section 4: Action**

The Board shall then be responsible for whatever action it deems appropriate.

#### **ARTICLE IX** Rules of Order

Robert's Rules of Order, Revised, shall control as to any matters not provided for in these By-laws.

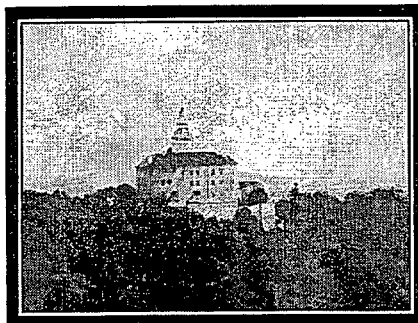
#### **ARTICLE X** Dissolution

Upon approval of two-thirds of the Board in attendance, a resolution to dissolve the Society will be placed before the Membership at a stated or properly called meeting, and upon approval by a majority of members present, the Society will be dissolved.

#### **ARTICLE XI** Final Dispersal of Funds

Upon dissolution, no part of the Society's funds or property shall be distributed to or among its members, directors, or any individuals, but after payment of all indebtedness of the organization, its surplus funds and properties shall be used in such a manner as to further the specific purpose of the organization as set forth in ARTICLE FOUR of the CHARTER.

End



## West Texas Pioneers

----from the pages of the *Fort Worth Star-Telegram*

A few years ago, I received a suggestion that there may be genealogical material of general interest in a manuscript holding called "*West Texas Pioneers*" at the Barker Texas History Center, Center for American History, at the University of Texas here in Austin. I looked into the file and was agreeably impressed, but noted that the material was completely loose in the files and necessarily required indexing before it would be of any value for genealogical purposes.

The *Fort Worth Star-Telegram* is a venerable and long-respected Texas newspaper; it has had a continuous record of publishing under the same masthead for many, many years. Fort Worth has always been uniquely located—"Where the West begins"—if I remember the phrase correctly. The newspaper has prided itself, as has the city, for being the window to the West, certainly that part of the West which is represented by our great State. It seems that in about 1931 the editors apparently recognized that many of the people who settled West Texas were getting up in years, and so before they were gone the paper ought to provide some means of individual recognition of these genuine pioneers. To do so, the paper included, possibly in each issue or every so often, a small blank form or coupon which a reader, if he or she identified as a pioneer, could clip, fill out and mail in. This "campaign" apparently continued for some time, perhaps into 1934. From the size of the file I would guess there are over 3000 people who sent in at least a coupon. Some submitted other material--- many 1- to 5-page handwritten or typewritten letters (on the 1930 model Royals and Underwoods then available); there are in some cases newspaper clippings, photos, and other material pertinent to a particular person's life in this pioneer area. Of most interest are the letters, mostly written in pen or pencil, very informally and in the all-but-lost idiom of the day. They talk of Indians, dust storms, wagon travel, rustlers, all the many perils those people faced as a matter of life. Many mention other family members or neighbors, along with dates; it is these which are genealogically of most value. Here the gold is in the content, not the binding. Copies of a typical coupon and letter (Charles Robert Carruth of DeLeon, Texas) are included herein.

Are You a West Texas Pioneer?			
Name	Charles Robert Carruth		
I settled in West Texas in	Jan 12, 1922 Comanche Co. Texas		
Birth place	Georgia	Date	1/12/48
Present address	De Leon, Tex.		
(Fill out and mail this coupon to Pioneer Editor, The Star-Telegram, along with a brief account of your experiences and facts about your section of West Texas. Photographs also will be appreciated.)			

In 1986, Linda B. Allie and W. I. Hudson published a book entitled *West Texas Pioneers* in which they excerpted information on 542 senders from the collection. The compilation reproduces or extracts quotations from the letters and other written material and is an excellent sampling of the overall holding but it lacks any information on the remaining senders. That remaining material needs exposure as well. There is a reference in this book indicating that pictures/photos in the collection were given to the University of Texas at Arlington where they were placed in Special Collections. In any case, at least some photos remain in the CAH holding.

As mentioned, the matter is loosely held in manila file folders in 5 archive file boxes. It is indexed by alphabet letter in each folder and the material is placed reasonably alphabetically within each folder, but since the forms, letters, photos, etc are variously sized and loose in the folders this system breaks down. At least the paperwork for each specific pioneer is paper-clipped together. The paper is aging (not much acid-free here), particularly the newsprint, the paper clips are rusting a bit, and some material is hard to read. So the indexing is a matter of carefully unclipping and extracting pertinent index information. Sounds easier than it really is.

Early on, I called the *Star-Telegram* and was told they no longer had archive material dating back into the 1930's and they didn't recall the project. I assume that at some time after 1934 the editors simply decided to bundle this material and send it to Barker, where it was catalogued and shelved<sup>1</sup>. Barker (I know, UT wants us to call it the

<sup>1</sup> A copy of the Allie-Hudson book is also at the Center for American History

CAH but it shall always be *Barker* to me), as with all archival libraries, has carloads of material awaiting indexing and this batch is with good reason way down on their priority list. Yet, as I scan the holding I know that many of the letters, etc would be very meaningful (and perhaps supply needed family information) to a genealogist descendant of certain of the pioneers to say the least. The holding deserves some publicity in addition to the Allie-Hudson book.

I decided to index the material (which runs to 2 feet 1 inch in size), bit by bit as I had time. The library staff readily agreed to my doing so and then publishing the index in the Quarterly if they were favored with an early copy of the index—easiest thing to agree to I ever ran across. I originally wanted to get the whole indexing completed before publishing. But time slips by, and I find myself at this point with 400 entries, and just now through the “C’s”. There are likely over 3000 names in all. The slow pace has determined me to begin publishing the index now, and supplement in future Quarterly issues as the material can be further worked.

The important information on each coupon was the name, residence in 1931-4, date of birth, and date when moved to West Texas. To supply a bit more information on the amount of material accompanying each name I have worked out the following set of abbreviations which apply to the Remarks column for each entry:

__pl	=	__-page letter (accompanying the form)
nc	=	newspaper clipping
ob	=	obituary
oi	=	other information
on	=	other names in letter than writer's
ph	=	photo(s)
No remark	=	nothing accompanying form

I make no pretense about accuracy or completeness regarding these classifications. My main intent is to pick up on the name, residence and birthdate of the pioneer. If a reader finds a name of interest and wants to look at the material it will be necessary to go to Barker (CAH) and thumb through the loose matter until the subject is found. What you find may disappoint you, but in many cases you will be enthralled. I hope so.

Following are pertinent details on the archive:

Location:	The Center for American History The University of Texas at Austin 2.101 Sid Richardson Hall Austin TX 78712
Holding:	Archives and Manuscripts West Texas Pioneers, 1931 2 feet 1 inch
Boxes:	2H354 A-D 2H355 E-K 2H356 L-Q 2H357 R-Y + misc. 2H358 Unclassified

to Robert County also born January 26th 1848 in Cobb County Georgia Texas County in 1855 his parents moved to Benton County Alabama near Alabama County at the age of 10 years he volunteered in the state service was in Henry McRae's Co. 2nd Cavalry Battalion, 6th Cavalry Brigade, 2nd nd of April 1865 he was in the battle of Selma Alabama was taken prisoner & paroled on April 10th. went home on Oct 10th 1867. from said his father's family started to Texas in by wagon, was four weeks on the road lived in Hill County 4 years and then moved to Comanche County in 1872 on day 15th he married Mary Davis of Comanche County, she died at 9th 1887 on day 15th 1893 married Mary Jane Rose to this union were born three children, one daughter & two sons both of five years were born the 10th day of Oct the present wife is one year older than this first wife. his age is eighty five (85) years & two on the same farm for fifty one years only three years he lived in Dallas for the bulk of the rest of his life 1874 he owned a large dog, about 120 lbs, one night

the dog tried something up a spruce oak tree. The house was so thick he couldn't see. thinking it was a bear, he climbed the tree got about half way up the tree (The bear as he thought it was) jumped out & pulled like a bear climbed another smaller tree. The time he could see it, as he shot it twice with a rifle gun, and it fell out dead, and it proved to be a porcupine.

Typical Letter in West Texas Pioneers Holding, CAH



Following are entries for surnames beginning with A thru C which have been indexed so far. Hopefully more indexing can be completed in the near future. And hopefully there will be more than a few readers who will recognize a grandparent or family member, and just maybe find a hand-written letter by that person they never knew existed.

Bill Koehler

## INDEX TO SUBMITTER NAMES, WEST TEXAS PIONEERS COLLECTION, CAH, UT AUSTIN

BOXES 2H354-8

A-C

\*Womens' names in parentheses are their given and/or their maiden surnames.

Name of Pioneer*	Residence in TX in 1933		Date		Remarks On Contents
	County	City	of Birth	to W. Tex.	
Abercrombie, Geo.		Archer City	1876		1pl
Able, James Milton, M&M		Melvin			2pl, on
Ables, W.M., Mrs.		Baird	1867	1880	1pl
Adams, D.E., M&M		Barstow	1870		2pl, on
Adams, D.W., Mrs.		Lamesa	1856		1pl
Adams, J.K., M&M	Childress	Childress			1pl
Adams, Mrs. F.M. Goodall		Post		—/—/1875	3pl, on
Adams, Mrs. John A., Rebecca		Dublin			1pl
Akard, Ben W., M&M		Weatherford	15/11/1843	8/1871	2pl, ob, ph
Albin, J.J.		Morton	17/10/1870		2pl, on
Alexander, G.H., Mrs.	Hardeman	Goodlett	5/11/1855	1887	1pl, on
Allard, G.W.		Byers	13/10/1846	1896	1pl
Allee, J.M., Mrs (Brown)		Crowell	29/8/1854		3pl, ph, on
Allen, A.T.		Fort Worth	1859	1882	1pl, on
Allen, J.A., M&M		Graham	22/3/1845	1875	1pl, on
Allen, John Hudson		Lampasas	25/2/1845	1855	2pl, on
Allen, Josie, Mrs.		Coleman	18/7/1857	1881	1pl, on
Allen, W.E., Mrs.		Ballinger	1858	1883	
Allison, T.J.		Nocona	29/7/1850	1867	2pl, on
Allred, Renne, Sr.		Bowie	3/12/1864	1890	2pl, on
Alston, Otis		Leuders			13pl, on
Amburgan, Japtha J.		Odessa		1/3/1883	2pl, on
Ancell, Geo. B.		Electra			2pl, ob, ph, or
Anderson, R.G.		Abilene?			1pl, on
Anderson, Riley	Fisher			1881	
Anderson, T.L, Mrs.(Mary Paschall)		Menard	15/4/1853	1868	2pl, on
Anderson, William W.		Rising Star	3/11/1849	1880	3pl, on
Annis, J.T.L., Mrs.		Merkel	1844	1882	3pl, 2pl, on
Ansley, J.O., M&M		Hobbs, NM	1880-1	1891	1pl, on
Applewhite, J.H.		Fort Worth	11/3/1853	1857	
Archer, J. C., Mrs.		Granbury	11/6/1856		
Armstrong, Frank C.		Fort Worth	10/10/1863	1905	1pl, on
Armstrong, Hugh Rodman		Walnut Springs	1842	1855	1pl, on
Arnold, C.E., Mrs.		Lueders	12/1853	1884	2pl
Arnold, Cora (Elliot?)		Lueders	1853	1884	2pl, on
Arnold, Gertrude (Braidfoot)		Silverton	21/3/1880		
Arnold, L.V.		Fort Worth	1864	1868	1pl
Arnold, M.F.		Fort Worth	1857	1883	1pl
Arnold, M.F., Mrs. (Lawrence)		Fort Worth	1/10/1873	1883	
Ash, W.B.		De Leon	1/3/1874	1892	3pl, on
Ashbrook, J.B.		Glen Rose	14/5/1859	1866	2pl
Atkins, A.A., M&M		Breckenridge		1871	2pl, on
Auburg, Sarah (Baker), Mrs.		Estelline	27/1/1846		1pl, on
Austin, H.J., M&M		O'Donnell			3pl, on
Austin, W.B., Mrs. (Woody)	Gaines	Seminole	5/2/1869	1904	3pl, on
Autry, John		Fort Worth			3pl, oi
Ayers, J.G. & Rebeca (Langston)		Chillicothe	1848/51	1877	3pl, on
Aynes, James W. M&M		Crosbyton	1860/68		2pl, on
Babcock, H.N.		Fort Worth	7/12/1854	1890	2pl
Bachman, J.W.R.		Seagraves	12/1849	1850	3pl

# INDEX TO SUBMITTER NAMES, WEST TEXAS PIONEERS COLLECTION, CAH, UT AUSTIN BOXES 2H354-8 A-C

\*Womens' names in parentheses are their given and/or their maiden surnames.

Name of Pioneer*	Residence in TX in 1933		Date		Remarks On Contents
	County	City	of Birth	to W. Tex.	
Bade, Henry		Sterling City	5/1862	1880	2pl, on
Badgett, W.H.		Colorado City		1890?	1pl
Baggett, E.B.		Christoval	11/9/1847	1852	1pl, on
Baggett, G.W., M&M		Abilene	1865	1882	
Bailey, J.H., Mrs.		Sweetwater	1856	1876	
Baker, W.V.P. (Billy)		Lamesa	4/1875	1885	2pl, on
Baker, A.A., Mrs		Merkel	10/12/1844	1886	1pl, on
Baker, Billie		Lamesa	18/4/1875	1885	1pl, on
Baker, J.A., Mrs.		Brownwood	28/2/1868		
Baker, J.R., M&M		Lovington, NM		1874	1pl, on
Baker, Jefferson T.		Sulphur, OK		1881	1pl, on
Baker, Kate, Mrs.		Olney	1859	1879	1pl, on
Ball, William M.		Gordon	12/5/1851	1876	1pl
Ballard, O.E., Mrs. (Wallace)	King	Grow	1866		3pl, on
Ballentine, Mary F., Mrs.		Tolar	20/12/1866		3pl
Banner, Earnest B.		Fort Worth		1877	1pl
Bardwell, Glen, M&M (Fly)		Sweetwater		1881	2pl
Barnes, F.E, M&M		Sipe Springs	1852	1884	1pl
Barnes, J.S, M&M		Westbrook	1852	1883	1pl
Barnett, E.G.		Bridgeport	1/6/1855	1855	2pl
Barnett, E.V., Mrs.		Ira	22/5/1863	1874	2pl, on
Barnett, Elisah Green		Bridgeport	1/6/1846	1855	1pl, on
Barnhill, Martin		Baird		1877	1pl, on
Barrick, Ella L. , Mrs. (Kelsey)		Big Spring		1880	1pl
Barton, B.C., M&M		Fort Worth	1852-59	1889	22pl, on
Bates, Fincy C.		Sheffield	1870	1874	6pl, on
Bates, Mary, Mrs.		Brownwood	11/10/1840	1867	2pl, on
Baugh, W.M.		Brownwood	1854		1pl, on
Baughman, Mike J.		Lamy, NM	1851		1pl, on
Beard, W.W.		Sweetwater	11/3/1850	1889	1pl, on
Bearden, C.P.		Rising Star	25/12/1847	1872	2pl, on
Beasley, A.J., Mrs.		Moran	17/12/1859	1873	
Beasley, A.W.		Baird	1876		3pl, on
Beauchamp, W.T., M&M		Fort Worth	26/8/1856		1pl, on
Beauchamp, William T.		Midland	26/8/1856	1908	3pl, on
Beaumont, G.B., Dr. & Mrs.		Coleman	1845-54	1886	2pl, on
Beaver, M.E., M&M		Girard	1867-70	1874	3pl, on
Beckham, J.A. (Mont)		Jal, NM	1871		1pl,
Beckham, William L.		Jal, NM	15/9/1869		6pl, on
Bedford, W.G., Mrs.(Shaw)		Winters	1848		5pl, on
Behrens, August F.		Brady	17/5/1867		4pl, on
Belcher, John H.		Plainview	26/12/1848	1860	6pl, on, ph
Bell, J.D. Mrs.		Dallas			1pl, on
Bell, Lucy, Mrs.		High Rolls, NM	4/9/1847	1863	1pl, on
Bell, T. Edgar (Edd)		Gordon	10/2/1862	1868	1pl, on
Bell, W.E.		Gould, OK	1/5/1852	1860	2pl, on
Bellamy, L.W., Mrs.		Granbury	1866	1872	
Benedict, W.H.		Knox City	1852	1863	6pl, on
Benham, S.A.		Brady	13/7/1869	1882	1pl, on
Bennett, James H., M&M		Sweetwater	1882-3	1882-3	

# INDEX TO SUBMITTER NAMES, WEST TEXAS PIONEERS COLLECTION, CAH, UT AUSTIN BOXES 2H354-8 A-C

\*Womens' names in parentheses are their given and/or their maiden surnames.

Name of Pioneer*	Residence in TX in 1933		Date		Remarks On Contents
	County	City	of Birth	to W. Tex.	
Bentley, D.C., Mrs. (Fuller)		Snyder	1869		1pl, on
Benton, J.C., Mrs. Courtney (Allen)		Plainview	30/7/1852		2pl, on
Bessire, P.E., Mrs.		Cisco	16/4/1859		2pl
Biggs, R.A., Mrs.		Santa Anna	1852		1pl, on
Bigham, J.F.		Fort Worth	30/6/1870		1pl
Bighorn(?), W.R.		Lampasas	11/6/1847	1865	3pl, on
Birdwell, Pauline		Odessa	1861	1896	
Black, George W., Mrs. Mattie (Price)		Baird	25/10/1863	1877	2pl, on
Blackburn, M.V., Mrs.		Stamford	1869	1874	1pl
Blacklock, J.M.		Fairy	1875		2pl, on
Blair, W.J.		Fort Worth	1851	1872	2pl
Blake, J.T., M&M		Stamford	1885-67	1865-82	
Blakley, J.G., Mrs.		Baird	1851	1871	1pl
Blakley, John G.		Belle Plaine			nc
Blankenship, A.W., M&M Mary (Perrett)		Lubbock	1872-8		4pl, on
Blankenship, W.H., M&M Tina (Peck)		Abilene	1862	1870	1pl, on, nc
Bledsoe, R.C., Mrs. (Landers)		Granbury	1866	1866	2pl, on
Bledsoe, Tom A.		Abilene	3/12/1872		1pl
Blue, Henry		Gordon			2pl
Blundell, R.F.		Mt. Pleasant (b.)			1pl, on
Bobo, Z.B., M&M		Rhome	1858-69	1873-79	3pl, on
Bogart, Dr. W.F., Mrs.		Fort Worth		1870	3pl, on
Bogart, W.F., Mrs.		Fort Worth	29/4/1855	1874	1pl
Bohannon, L.W.		Knox City	1852	1869	2pl, on
Boler, J.M.		Brownwood	1852	1876	1pl, on
Boles, E.W.		Cisco	12/1/1862	1882	2pl, on
Bollinger, D.B., M&M		New Braunfels	1854-58	1876	2pl, on
Booker, Nannie (Fuller?)		Glen Rose	1858	1878	6pl, on
Boon, S.H., M&M		Mineral Wells	13/8/1859	1889	3pl
Boren, Alex, M&M		Ringgold			3pl, on
Boren, J.M.		Post		1877	2pl, on
Boren, J.M.		Post	1870	1889	2pl, on
Bottoms, W.H.		Jacksboro		1875?	2pl, on
Boughman, M.J.		Archer City	1856	1860	
Bousman, Louis P., M&M (Sallie Gamble)		Waurika, OK	1856-58	1871	1pl, on
Bowen, B.K., M&M (Mattie Dockum)		Post	1862-69		3pl, on
Boyd, I.W.		Veal Station			1pl, on
Boyd, R.C., M&M		Frankell	1857(?)	1865	3pl
Boyd, W.H. & Chas (son)		Sweetwater	1848	1881	2pl, on
Boyd, Walter		Abilene	1865	1884	
Boyle, J.W., M&M		Clovis, NM			1pl
Boyle, J.W., Mrs.		Clovis, NM	1856	2/1883	3pl
Boyles, C.S.		Sweetwater	2/1874	1889	1pl,
Bozzell, Lon, M&M		Fort Worth	1857-64		2pl, on
Bradford, J.H.		Fort Worth	15/7/1872		5pl
Bradstreet, H.C., M&M	Bosque	Clifton	14/12/1860	1877	2pl
Bragg, J.A.		Fort Worth	4/10/1857	1866	1pl
Brandon, J.B.		Putnam	1861	1880	3pl, on
Brannan, C.H.		Santa Anna	9/11/1857	1876	9pl, on
Brannon, J.R., M&M		Sweetwater	15/8/1857	1883	2pl, on

# INDEX TO SUBMITTER NAMES, WEST TEXAS PIONEERS COLLECTION, CAH, UT AUSTIN BOXES 2H354-8 A-C

\*Womens' names in parentheses are their given and/or their maiden surnames.

Name of Pioneer*	Residence in TX in 1933		Date		Remarks On Contents
	County	City	of Birth	to W. Tex.	
Brashear, J.W., Judge		Sweetwater	1/12/1850	1901	
Braun, Sarah, Mrs.		Fort Worth	1870	1875	3pl, on
Brawne, George		Fort Worth	1870	1894	2pl, on
Bray, Sarah Jane Pricilla Stone		Waldrip	1892	1886	1pl
Brightwell, J.P., Mrs. (Mary Ann Gilliland)		Cross Plains	16/12/1851	1871	4pl, on
Brimberry, Samuel E.		Ranger	1860	1876	1pl, on
Brisco, J.M., Mrs. Dicie (Whetstone)		Graham	25/1/1856		1pl, on
Britain, G.I., Rev.		Plainview	8/4/1855	1860	2pl, on
Browder, Rufus		Rochester	1848	1860	2pl, on
Brown, C.L.		Sweetwater			1pl
Brown, C.L.		Sweetwater	12/3/1851	1879	1pl
Brown, Emma, Mrs.		Stacy	1860	1875	
Brown, J.H., M&M (Leona)		Baird	1874	1895	1pl, on
Brown, J.P. & Edwin (son)		Bluffdale			1pl, on
Brown, J.T.		Stacy	1861	1861	1pl, on
Brown, John C., Sr.	Coleman	Burkett	1858	1876	1pl, on
Brown, John R.		Weatherford		1857?	1pl
Brown, N.C.		Richland Springs	1849	1855	1pl, on
Brownfield, Lansford D., M&M (Velta)		Dora	1891-93		
Brownfield, Mary Hylton		Dora	1871	1879	
Brummett, R.C.		Childress	12/4/1846	1871(?)	1pl, on(many)
Bryan, J.E.		Clifton	2/9/1849	1867	1pl, on
Bryan, Sarah Elmira, Mrs.		Pottsville	17/2/1838	1882	1pl, on
Bryand, W.H.		Midland	1874	1889	1pl, on
Bryant, J.F, Sr.		Jal, NM	1874		
Buchanan, O.L., Mrs.		Colorado City	1875	1881	
Buchanan, C.M.		Post?	31/3/1853	1853	2pl, on
Bucy, W.A.		Rising Star	1870?	1870?	1pl
Bullard, Sam B., M&M		Sweetwater	11/1848	1876	1pl
Burkett, William		Burkett	19/3/1859	1883	2pl, on
Burks, J.W.		Santa Anna	11/4/1869	1886	1pl
Burks, W.J., Mrs	Taylor	Grim	11/4/1858	1882	4pl, on
Burns, Rollie		Lubbock	8/4/1857	1881	6pl, on
Burns, T.A., Col.		San Antonio	12/7/1832		3pl, on
Burrows, M.J., Mrs.		Bronte	1858		4pl, on
Bush, Seth		Breckenridge			1pl, on
Bush, T.D., Mrs (McFarlin)		Goldthwaite	6/8/1856	1856	3pl, on
Butler, G.H., Mrs.		Fort Worth	1870		1pl
Bynum, W.A.		Abilene	1878	1902	1pl, on
Calcote, L.G., Mrs.		Abilene	1866	1890	oi
Caldwell, J.D.		Brownwood	1856		
Caldwell, J.P.	Brazoria		1832		4pl, oi
Callahan, James. H.	Callahan				oi
Calvert, B.C.		Mineral Wells	13/5/1871	1879	10pl, oi
Calvin, J.C., Mrs		Fort Worth?	23/12/1858		oi
Camp, S.E., Mrs.		Fort Worth	1859	1871	2pl, oi
Campbell, A. T.		Ballinger	1855	1880	
Campbell, Joe H.		Matador	12/1/1877	1890	
Candle, J.H., Mrs.		Chillicothe	1851		2pl
Candle, John T.		Saltillo	1857		2pl, on



## INDEX TO SUBMITTER NAMES, WEST TEXAS PIONEERS COLLECTION, CAH, UT AUSTIN

BOXES 2H354-8

A-C

\*Womens' names in parentheses are their given and/or their maiden surnames.

Name of Pioneer*	Residence in TX in 1933		Date		Remarks On Contents
	County	City	of Birth	to W. Tex.	
Cardwell, Perla (Herrin), Mrs.		Big Spring	15/1/1866	1882	2pl, on
Carey, George W.		Pioneer	1854	1890	2pl, oi
Carey, John		Weatherford	1857	1888	oi
Carmack, C.F.		Briscal			7pl, oi
Carpenter, A.W., M&M		Granbury	1865		oi
Carpenter, J.C.		Rhome	1874		
Carpenter, J.W.		Big Spring	11/1/1867	1884	4pl, oi
Carr, E.L.		Rochester	31/3/1854	1878	2pl, oi
Carr, M.P.		Aspermont	31/3/1854	1879	oi
Carrell, H.H., Mrs.		Tatum NM	1880		
Carruth, Charles Robert		DeLeon	26/1/1848	1868	3pl, oi
Carruth, W.R. (Dick)		Lubbock	12/7/?	1868	oi
Carter, A.M., Mrs.		Fort Worth	1856	1878	6pl, oi
Carter, H. Lee		Hillsboro	1864	1887	3pl, oi
Carter, J.W., Mrs.		Dimmitt	1855	1884	oi
Carter, P.H.		Fort Worth	1851	1880	4pl, oi
Carter, P.S.		Gorman			oi
Casey, J.E. M&M		Tuscala	1864-71	1899	
Casey, W.D., M&M		Toyah			oi
Cathey, J.H.		O'Donnell		1883	5pl, oi
Chadwick, Kate Spangler, Mrs.		Henrietta	1885		
Chambers, John A.	Hemphill	Canadian	1860		4pl, oi
Chambers, Lemuel & Hattie Watts		Santa Anna	19/10/1841	1860	oi(2 sets)
Chandler, E.A., Mrs.	Reeves	Saragosa	1853?	1857	2pl, oi
Chandler, Emma A.		Bowie	1862	1877	oi
Cheairs, John M.		Big Spring	1874		4pl, oi
Cheeves, Elton	Jack	Vineyard		1877	1pl, oi
Childers, J.A.		Mullin	1853	1877	oi
Childers, John D.		Sweetwater	1867	1879	
Childs, S.R. M&M		Cisco	1859-60	1878	oi
Chilton, J.E.		Commanche	16/3/1858	1885	3pl, oi
Chism, Matt H., Dr.		Graham	18/3/1854	1854	oi
Chisum, James Monroe		Whitesboro	23/2/1846		oi
Chorn, E.H.		Mansfield	1853	1869	1pl, oi
Christian, J.A., Mrs.		Paducah	1873	1881	
Chumbley, N.B. M&M		Plainview	5/3/1856	1890	1pl, oi
Clabaugh, S.N.		Hamilton	12/1/1854	1859	4pl, oi
Clack, Mary Hampton		Wingate	1859	1871	3pl, oi
Clarida, W.H.		Loving		1879	1pl, oi
Clark J.C.		Colorado	1849	1881	
Clark, A.A., Mrs.		Albany	23/1/1853	1877	
Clark, A.J.		Irving	1845?	1856?	clpg
Clark, J.P.		Knox City	1849	1890	
Clark, Joe		Stamford	13/5/1853	1881	oi
Clark, Lavinia, Mrs.		Merkel	3/10/1843	1847	2pl, oi
Clark, Randolph		Ranger	15/8/1844		2pl, oi
Clark, W.K.		Gail	1848	1849	2pl, oi
Clements, J.S.		Copperas Cove	1858		3pl, oi
Clements, Rachael		Goldthwaite	1883		3pl, oi
Clewis, J.D.		Thornton	28/11/1862	1884	3pl, oi

# INDEX TO SUBMITTER NAMES, WEST TEXAS PIONEERS COLLECTION, CAH, UT AUSTIN

## BOXES 2H354-8 A-C

\*Womens' names in parentheses are their given and/or their maiden surnames.

Name of Pioneer*	Residence in TX in 1933		Date		Remarks On Contents
	County	City	of Birth	to W. Tex.	
Click, Creed Matthias		Fort Worth	6/12/1856	1877	5pl, oi
Clousnitzer, E.A.		New Braunfels	1869		8pl, oi, clpg
Coats, Lee A.		Baird	1882?		oi
Cochran, W.C.		Midland	14/8/1852		4pl, oi
Cockrell, E.		Cleburne	5/8/1852		7pl, oi
Coe, A.J.		Colorado	20/11/1853	1881	5pl, oi
Coffey, Fogg	Coleman	Leaday	1863		oi
Cohron, F.G.		Throckmorton	1/5/1845	1908	oi
Coker, Alf C.		Fort Worth	22/12/1860		3pl, oi
Colbaugh, Sam		Best	10/3/1871		6pl, oi
Cole, S.A.		Sweetwater	1866	1882	
Collett, J.C.		Roaring Springs	1861	1878	oi
Collier, M.J.		Fort Worth	1849	1855	oi
Collins, Jo (Ables), Mrs.		Fort Worth	1855	1855	
Conaway, C.P., Mrs.		Colorado	1861		oi
Connell, W.N.		Midland	1855	1909	oi
Conner, A.H.		Brady	1850	1850	oi
Conner, A.H.		Brady	1850	1850	oi
Conner, A.J. (Hank)		Big Spring		1878	oi
Conner, C.E.		Menkel	1862	1869	oi
Conner, C.W. (Charley)		Baird	1862	1884	oi
Conner, Fletcher		Lamesa	1859		oi
Cook, R.H.		Electra	1867	1904	oi
Cooke, Robert, Dr.		Fort Worth	1857	1889	oi
Cooke, Sarah J., Mrs.		Brownwood	1861	1877	oi
Cooke, W.L.		Talpa	1863	1886	oi
Cooker, E.M., Mrs.		Fort Worth		1855	oi
Coons, Ida L, Mrs.		Fort Worth	1860	1880	
Cooper, A.Q., Mr. & Mrs.		Odessa	1869/73	1873/81	oi
Cooper, E.W.			1856?		
Cooper, Jacob M.		Coleman		1890	oi
Cooper, Nora E., Mrs.		Rotan	1872	1886	oi
Copeland, Callie, Mrs.		Childress	1849	1851	oi
Corbett, T.M., Mr & Mrs.		Graham	1860/66	1876/7	oi
Cornelius, F.		Midfield	1850?		oi
Cornils, B.A., Mr. & Mrs.		Lohn	1857/65		oi
Cosby, M.E., Mrs.		Sanco	1859	1890	oi
Costephens, J.E.		Merkel	1851	1877	oi
Cotten, S.A.		Hollis, AR?	1861	1871	oi
Couch, J.A., Sr., Mrs.		Haskell	1843?	1870	oi
Counts, H.A.		Breckenridge	1870	1870	oi
Coursey, A.C.		Coleman	1849	1879	oi
Cowan, T.J., Mr. & Mrs.		Littlefield	1855/62		oi
Cowden, Jeff D.		Midland	1861	1861	oi
Cowden, William Frederick		Midland	1859		oi
Cowling, S.W., Mrs.		Bridgeport	1841	1851	oi
Cox, A.B., Mr. & Mrs.		Tuscola	1861	1890	oi
Cox, J.H., Mrs.		Stephenville	1851	1868	oi
Cox, John R., Mrs.		Sweetwater		1878	oi
Cox, M.J., Mrs.		Fort Worth		1871	oi

## INDEX TO SUBMITTER NAMES, WEST TEXAS PIONEERS COLLECTION, CAH, UT AUSTIN

BOXES 2H354-8

A-C

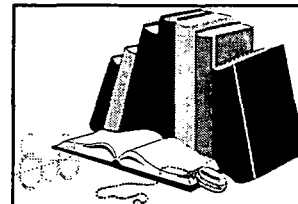
\*Womens' names in parentheses are their given and/or their maiden surnames.

Name of Pioneer*	Residence in TX in 1933		Date		Remarks On Contents
	County	City	of Birth	to W. Tex.	
Cozzens, L.P.		Abilene	1855	1882	oi
Craighead, E.C., Mrs.		Breckenridge	1844	1878	oi
Crane, Mamie Douthit, Mrs.		Sweetwater		1880	oi
Crane, R.C.		Sweetwater	1864	1886	oi
Cravey, H.C., Mr. & Mrs.		Spur			oi
Cravy, M.K., Mrs.		Sweetwater	1852	1901	oi
Crawford, W.H., Mr. & Mrs.		Haskell	1854	1865	oi
Crenshaw, Albert L.		Cresson	1850	1876	oi
Cretsinger, C.T.		Gordon	1851	1855	oi
Crockett, Ashley W.		Granbury	1857		oi
Crockett, M.E., Mrs.		Granbury	1866	1872	
Croft, W.C.		Colorado	1853		oi
Cross, Jacob		Loving	1859		oi
Crossett, Hattie, Mrs.		Big Spring			oi
Crouch, S.E., Mrs.		Hereford	1854	1869	oi
Crow, J.G.		Graham	1861	1897	oi
Crow, Permelia, Mrs.		Shamrock	1860	1886	oi
Crowe, J.V. (Van)	Hall	Newlin	1863	1890	oi
Crowley, A. Franklin		Fort Worth	1861		
Crowley, J. S.		Breckenridge		1867	oi
Crownover, E.J., Mrs.		Munday	1842?	1846?	oi
Crump, J. H.		Henrietta	1862	1874	oi
Crump, J.H.		Brownwood	1863	1887	oi
Crump, S.B.		Farwell	1850	1892	oi
Culver, S.H.		Anson	1858	1904	oi
Cunningham, W.	Young	Eliasville	1855	1893	oi
Curlee, J.J.		Christoval	1865	1888	
Curry, C.N., Mrs.		Winters	1858	1886	
Curry, E.S., Mr & Mrs.		Abilene	1862	1883	oi
Curry, Elizabeth (Grandma), Mrs.		Buffalo Gap	1833		oi+++
Curry, J.C., Mr. & Mrs.		Weatherford	1854/9	1880	oi
Curtis, Malcolm		Elbert	1850	1870	oi

**HAPPY HUNTING GROUND**

Send your proofread information to Lorrie F. Henderson, 5722 Highland Hills Drive, Austin TX 78731-4244, (512-451-2312).. Cutoff date is the 10th of the month preceding the month of publication. Include at least one first name, date and place per query. Please use names of months and the two capital letters for states. Letters may be edited to our format. Queries are free but if a reply is desired, we would appreciate your including a SASE. We would also request receiving 10c/page plus postage or a modest donation upon receipt of a reply.

Note: Editorial comments, if any, are in *italics*.



**WILDER/ REESE** Seeking more information re: grandfather, **JOHN SILAS WILDER** and step-grandmother **MARY LOU REESE WILDER (or MYRA)**; the latter born 6 Nov., 1889, Crocket Co., TN, father, **THOMAS JEFFERSON REESE**. John & Mary's two daughters, married names unk., were **MAVIS** (b. 1907), & **MYRTLE** (b. 1913) believed to be in Austin, Travis Co., TX. Trying to find these daughters, also. [*Virtually no information about this family found at Texas State Library by HHG editor.*] **John W. Wilder, 36330 Walden Road, Gadsden, AL 35904; (256)546-0065; aa4jw@hiwaay.net.**



**WALKER** Need some help finding some family members. **WILLIAM & MARY WALKER**, b. in England, buried in Oakwood Cemetery [HHG editor looked in cemetery books @ TX ST Library, could not confirm this information; requested any proof for AGS project], Austin, TX. William d. 29 July 1890; Mary d. 11 Oct 1886, apparently came to US in 1871 (immigration records). Three children: great grandfather **JES WARD WALKER**, b. 1866, d. San Diego, CA; seeking other two children, names believed to be **THOMAS WALKER** and **MARY ANN WALKER**, the latter thought to have married **WILL JAMES**, and lived in Austin when William d. in 1890. Would like records of Thomas or Mary Ann and descendants, and location; did they move from TX? If so, where? **Joseph Walker, 392 Dairy Loop Road, Rosebury, OR 97470.**



**BEAM/ DAVIDSON** G-g-grandparents **SILAS WILLIAM BEAM** and **MATTIE/MARTHA B. DAVIDSON BEAM** listed on 1900 Census in Georgetown; no info since then. Fmly info is they may have moved toward Ft Worth, died of consumption. Any info appreciated. **Nancy Beam Pexa, 8 Harvest Hill Road, West Simsbury, CT 06092; nanpexa@aol.com.** [*Genealogy on the Beam-Davidson line is on Page 39 of this issue. —Ed.*]

*Lorrie Foster Henderson*

Remember this riddle/rhyme from the early 1930's?

Once a pigboliceman  
Saw a bittllelum  
Sitting on the sturbcone  
Chewing gubberrum.  
Said the pigboliceman  
To the bittllelum,  
"Simmegome!"  
"Ninny on your tintype!"  
Said the bittllelum. ----- LFH

### Fred McLaughlin Family

Fred was born on 17 January 1880, in Austin, Texas. He was the 4th child of Rowena Amelia Terheun and Chatham Ewing McLaughlin. When he was born, his parents were living in the same house that his grandparents, Amelia Jane Wheatley and Elias McLaughlin, had bought when they moved to Austin about 1860. The address of the house was 304 West 13th Street, and it was located one block west of the Texas Capitol Building. Emma Delia Sperry was born on 2 April 1886, in Nephi, Juab, Utah. She was called Della.

As a young man Fred held several odd jobs. One of these jobs was delivering papers, including "The Rolling Stone" written by O. Henry. He attended Austin High School, and was one of the founders of the school newspaper, "The Comet". He served as Chief Reporter and as the Business Manager. Fred attended the University of Texas. Then he went to work for the U. S. Geological Survey as rodman. He worked as a Topographical Engineer for the Department of the Interior for 32 years. He traveled much of the United States making topographical maps. One of these trips took him to Frisco, Utah where he met the girl he later married - Fred and Della were married on 18 December 1907 in Nephi, Juab, Utah. Della accompanied him on his trips until the birth of their first child, after that she spent most of her time in Washington, D.C. All four of their four children were born there: Malcolm (14 July 1909), Winifred (1 November 1914), Nina (6 November 1915) and Charles Hugh (25 February 1921).

In 1917, Fred went into the Army as a Captain in the Engineer Corps. A flu epidemic swept the country that year and it sent Fred to Walter Reed Hospital. In his weakened condition, he contracted tuberculosis and remained in the hospital until 1919. During this period, Fred's brother, Hugh, took Della and her three children to Utah on the train, to stay with her family. Fred was able to leave the hospital in January 1919, then he and his family lived next door to his older sister, Maud.

Fred loved to write. He had won awards when he was in high school. In the early 1920's he took writing classes at Georgetown University. He then published two books, The Blade of Picardy, and The Vale of Aragon and wrote a 3rd manuscript, The Eyes of Ito Ito, which was circulated among family members, but has been lost. He also wrote 70-80 short stories and novelettes.

In 1932, at the age of 52, Fred retired and moved to Santa Monica, California to be close to his brother, Allan and his family. In 1957, when he was 77 years of age, at the urging of his daughter, Winifred, he wrote an autobiography entitled The Biography of an Unimportant Man. It contains much interesting information about his family, his childhood and his life before he married. Fred died on 18 June 1963 in Los Angeles, California and was buried in the Veteran's Cemetery there. Della died in Los Angeles on 24 October 1965.

### Chatham Ewing McLaughlin, Jr. Family

On 27 March 1885, Chatham Ewing "C.E." McLaughlin, Jr. was born in Austin, Texas. He was the 5th child of Rowena Amelia Terheun and Chatham Ewing McLaughlin. When he was born, his parents were living in the same house that his grandparents, Amelia Jane Wheatley and Elias McLaughlin, had bought when they moved to Austin about 1860. The address of the house was 304 West 13th Street, and it was located one block west of the Texas Capitol Building. Julia "Judy" Burke Costello was born 26 January 1884 in Portland, Oregon. She was the child of Ann Burke and Peter Costello, an Irish immigrant.

Judy's parents both died when she was very young and she was raised by two bachelor uncles, Martin and Michael Burke. She attended St. Mary's academy, a Catholic girl's high school that still exists. She was a musician; she played piano, organ and violin -accompanying vocalists and participating in a string trio; she also sang in the choir.

(cont'd)

Ed. Note: These discussions cover the last six of the children of Chatham "Chat" Ewing McLaughlin. Discussions of the McLaughlin family started in the September 2000 issue of the Quarterly and are concluded herein. The material was submitted by Myra Eichenberger, PMB 5894, 158 Rainbow Drive, Livingston TX 77399-1058. We thank Myra for this information.

C. E. grew up in Austin, Texas. About 1901, he left high school to take a job on a newspaper. He left Austin to find a better job in Winnipeg, Manitoba, Canada. From there he went first to Vancouver, British Columbia, Canada and then to Portland, Oregon. In Portland, he met Judy, either at the choir picnic or in the choir. Judy sang alto; C.E. was a baritone. They were married on 26 June 1917, in the Immaculate Heart Church. Their son, Martin was born on 23 June 1918. Martin was a "war baby" and kept his father, who had already been drafted, from being sent overseas.

C.E. was a stereotyper and was very active in the union -- International Stereotypers and Electrotypers Union, Local #48. Despite his limited formal education he was always relied on as a negotiator with the publishers; he also wrote witty, whimsical articles and doggerel poetry, which got published in the newspaper when news was light; after all, he set the type and the matrix! In the depths of the depression he lost his job with the Oregon Journal (partly because of this union militancy) and moved to various other newspapers during the next few years -- the Salem Statesman and the Vancouver, Washington Columbian.

He had a collection of harmonicas. "He continued to be an entertainer; as a member of the Knight of Columbus (Catholic version of the elks), he often entertained at meetings and other gatherings by singing (during which he would tear up a newspaper and produce a very interesting design (like a snowflake, etc.)); then he would play various harmonicas, sometimes more than one at a time. He also could play the musical saw." Martin Michael McLaughlin

On 2 July 1934, C.E. died of a heart attack. He was buried in Mt. Calvary Cemetery in Multnomah County, Oregon. On 29 April, Judy died in Portland, Oregon.

#### **Rena McLaughlin/William "Bill" Alexander Darter Family**

William Alexander Darter was born on 27 October 1883, in Fort Worth, Texas. He was the 3rd child of Annie Mary Gordon and Dr. Isaac Michael Darter. Rena (nmn) McLaughlin was on 9 April 1887, born in Austin, Texas. She was the 6th child of Rowena Amelia Terheun and Chatham Ewing McLaughlin. When she was born her parents were living in the same house that her McLaughlin grandparents had bought when they moved to Austin about 1860. The address of the house was 304 West 13th Street, and it was located one block west of the Texas Capitol Building.

Bill's father died when he was 10 years old, and his mother remarried. Bill dropped out of school after the 6th grade to help support his family. His mother died when he was 20. He entered the University of Texas at the age of 24. Rena graduated from Austin High School in 1904, and attended the University of Texas for several years. She then taught at the Bickler School for 3 years, 1908-11. While she was teaching she and Bill, whom she had met at church, coached the football team, the McLaughlin Tigers. The team won the city championship in 1910.

Rena tutored Bill to help him pass freshman English, a class he took several times, but never passed. In the end, they scheduled their wedding day, 7 June 1911, to conflict with his English Final, and the professor gave him the class as a wedding present. Rena & Bill had planned to do missionary work in Mexico. Unfortunately, Rena's mother had a 2nd and massive stroke in November 1911, so they changed their plans and moved in with Rena's parents so she could care of her mother and younger sister, Mickie, age 15. Rena's parents lived with them until 1927.

While Rena and Bill were living in Austin, they had three daughters, Margaret Leah (1912), Maud Ann (1913), and Rowena Totten (1916). About 1917, Bill had accepted the job as Superintendent of the Brenham Public Utilities, and the family moved to Brenham. They moved back to Austin during World War I when Bill was asked to teach airplane engines in School of Military Aeronautics. The family was back in Brenham in 1919 when Rena and Bill's last daughter, Billy Mildred, was born.

In 1923, the family moved to Giddings, Texas. Bill purchased the Giddings Texas, Light, Power and Refrigeration Plant, the water works, the creamery (which made Ice cream and butter) and the bottling works/Coca Cola franchise. About 1937, the family moved to LaGrange, Texas where Bill opened up a new farm implement business. In 1947, Rena and Bill moved back to Austin to retire. They helped organize the University Christian Church and were charter members.

Rena died on 25 March 1971. Bill died on 14 April 1982. They both died in Austin and are buried in the McLaughlin Family plot in the Oakwood Cemetery in Austin, Texas.

### **Allan Wheatley McLaughlin Family**

Allan Wheatley McLaughlin, was born on 9 July 1889 in Austin, Texas. He was the 7th child of Rowena Amelia Terheun and Chatham Ewing McLaughlin. He was named after his uncle on his mother's side, Allan Wheatley Rudolph. When he was born, his parents were living in the same house that his grandparents, Amelia Jane Wheatley and Elias McLaughlin, had bought when they moved to Austin about 1860. The address of the house was 304 West 13th Street, and it was located one block west of the Texas Capitol Building. Ruby K. Spears was born on 9 September 1891 in Archer City, Texas. She was the child of Laura K. and Robert Spears. She had three siblings: Sam, lone and Hazel.

In 1900, Allan was 11 years old and working as a carrier for the Galveston/Dallas News (newspaper). As a child Allan waited every day for the ice truck to come by. He would hop on and ride on the truck until he fell off, then he would be covered with dust. This earned him the nickname "Dusty". Allan's sister Rena thought he was still riding on the ice truck and delivering ice to the Spears when he met Ruby, the girl he married. He was the champion roller skater in the county. The first prize he brought home was a greased pig he had caught in the skating rink. He could do anything on skates and the family was proud of him.

In 1912, Allan was working as a printer and living with his parents at 1100 Blanco Street. He married Ruby K. Spears that year. They built a beautiful home in Austin and had one child, a daughter, Ruby lone McLaughlin, born 5 February 1915. In 1916, Allan was a printer for the Austin American (newspaper).

About 1921, Allan and his family moved to California. There he was a printer for 30 years on the Evening Outlook (newspaper) before he retired. He was a Deacon at the First Christian Church in Santa Monica. He liked to fish and was at home with a fly rod in a stream or surf fishing at the ocean. He was an avid bridge player and during his retirement he would play almost every day at the bridge club at Lincoln Park in Santa Monica.

Ruby lone McLaughlin married Benjamin Stream Woodcock in Santa Monica, California on her mother's birthday, 9 September, in 1940. They had two sons, Allan and John. Ruby lone taught school and her mother, Ruby, helped care for Allan and John during their earlier years and after school when they were older. Allan had a close relationship with his grandsons, he took them on many camping trips and outings.

Ruby was an excellent homemaker and cook. Ruby and Allan were very much devoted to each other and were inseparable throughout their lives. They both died in Santa Monica, California. Ruby died about 1972, and Allan died on 22 January 1974.

### **DeWitt McLaughlin TerHeun Family**

DeWitt Terheun McLaughlin was born 27 May 1891 in Austin, Texas. He was the 8th child of Rowena Amelia Terheun and Chatham Ewing McLaughlin. Evangeline "Van" Kroh was born on 14 August 1898 in Evansville, Indiana. She was the daughter of Cora E. Phelps and James Henry Kroh.

DeWitt was always a good student and had a beautiful voice, he sang in the boys choir in the St. David's Episcopal Church. He took part in all the plays in the town and school and directed most of them. For a while DeWitt lived with his older brother, Fred, in Washington, D.C., where he attended Georgetown University. Later he graduated from the University of Texas and Rice Institute (now Rice University) where he directed most of the plays put on by that school. During World War I, DeWitt was a Captain in the Infantry. DeWitt went to work for Sinclair Oil Company as a research petroleum engineer. During a voyage to China he met Van. It is said that he threatened to jump overboard if she would not agree to marry him. They were married on 11 September 1924, in a Chinese Garden.

In 1925, DeWitt and Van were in Paris, France. He earned a Masters Degree at the Sorbonne. Their first child, Patricia "Pat" Phelps McLaughlin was born there on 30 June 1925. When DeWitt returned to the U.S. he was the Head master at the Greenwich Country Day School in Greenwich, Connecticut. In 1934, their second child, Phelps Kroh TerHeun was born there on 31 March 1934. In 1935, the family moved to Los Angeles, California where DeWitt was Head Master at Hammond Hall Jr School. Their third child, Harrison Kroh McLaughlin, was born there on 14 September 1935. About 1939 DeWitt and Van divorced. After the divorce the DeWitt changed his name to DeWitt McLaughlin TerHeun, and Van and the children changed theirs, too. Van and the boys moved to Scottsdale, Arizona.

During World War II, 1941-45, DeWitt wanted to reenlist in the Army, but was not accepted. To contribute to the military effort he went to work for an aircraft factory in Los Angeles. He worked as a night watchman, and was called "Old Mac". During this time he was a frequent dinner guest at his brother Fred's house.

In 1947, DeWitt married Clare Harding Weber. About 1950 they bought the Highfield Estate in Falmouth, Massachusetts. Students from Oberlin College presented Gilbert & Sullivan Summer Theater there. Many family members visited Highfield during the summer season. In 1959, DeWitt was appointed to the Central Opera Service of the Metropolitan Opera. In 1960-1, he served on the Metropolitan's auditioning committee.

Clare died in 1959. William "Scot" Milligan, Mickie's husband, died that same year. DeWitt and Mickie then lived together until his death on 1 December 1963. They spent summers at Highfield, and winters in Austin, Texas. DeWitt is buried in the McLaughlin Family plot in Austin, Texas in Oakwood Cemetery. Evangeline "Van" Kroh TerHeun died in July 1966 in Phoenix, Arizona.

#### **Mildred Amelia McLaughlin/William Sutherland Milligan Family**

Mildred Amelia McLaughlin was born on 9 November 1896, in Austin, Texas. She was the 9th and last child of Rowena Amelia Terheun and Chatham Ewing McLaughlin. When she was born her parents were living in the same house that her McLaughlin grandparents had bought when they moved to Austin about 1860. The address of the house was 304 West 13th Street, and was located one block west of the Texas Capitol Building. As a child Mildred was called Millie, and as an adult she was called Mickie. William "Scot" Sutherland Milligan was born on 25 February 1897 in Glasgow, Scotland. He was the son of Isabelle Sutherland and Joseph Milligan.

Mickie graduated from Austin High School in 1914 and attended the University of Texas. She obtained a degree and a teaching certificate about 1918. Scot served in World War I as an officer with the Argyle and Sutherland Highlanders. He immigrated to the United States in 1921. He must have made more than 1 trip from Scotland to America and arrived from Glasgow, Scotland on the vessel Cedric which arrived at the Port of New York in the State of New York on 26 December 1922. He was an accountant and met Mickie when he was sent to audit W.A. Darter's books at the Power Plant in Brenham. Mickie and Scot were married in Austin, Texas on 8 October 1923. They stayed one night with the Darters in Giddings and then they were on their way to Kansas City where Scot had a good job waiting. Scot earned his CPA in September 1924.

In 1937 Scot's company transferred him to Europe. They were stationed in Copenhagen when the Germans invaded and then went to London where they stayed all during the war. He worked for a British government's rubber control agency, which distributed rubber among the Allies. Mickie drove ambulances during the war.

In November 1947 Queen Elizabeth II married Prince Philip, the Duke of Windsor. Mickie was a "Lady of Waiting" for the Queen during the wedding. It was her job to watch over the Wedding Presents. She was given a magazine size book commemorating the wedding.

In 1948, Mickie and Scot returned to Austin, Texas. Scot had tuberculosis and was allowed back into the states only with some special help from the then Texas Senator, Lyndon Baines Johnson.

In 1950, Scot was made the Treasurer of the Highfield Estate, Inc. and they moved to Massachusetts to help DeWitt care for the estate at Falmouth. It was a happy business arrangement until Scot's death on 8 Jan 1959. DeWitt's 2nd wife, Clare died that same year. Then DeWitt and Mickie made their home together - in Austin for the winters and Falmouth for the summers. This continued until DeWitt's death in 1963. Then Mickie moved to Austin and lived close to Rena & Bill Darter until her death in 1976. She died 13 June 1976, she and Scot are buried in the McLaughlin Family plot in Oakwood Cemetery.

End



---

*Texas State Genealogical Society*

---



22 February 2001

Marilyn M. Henley, President  
Austin Genealogical Society  
P. O. Box 1507  
Austin, TX 78767

Dear Marilyn:

The Texas State Genealogical Society was pleased to present the Austin Genealogical Society, Partner Society of TSGS, a "Matching Funds" Grant for the abstracting, inventorying and publishing of all identifiable Travis County cemeteries in a single useful resource. The Grant II is given to those Partner Societies who have a membership of 100 - 300. A check for \$200 was presented to the society at the Awards Banquet at the Annual Conference in Wichita Falls on November 11, 2000, with the remaining amount presented when the project is completed.

The project will be a great help to the genealogical researchers who work in the Travis Co. area and the Austin Genealogical Society should be commended for their work in canvassing the cemeteries.

Sincerely,

Yvonne S. Perkins  
TSGS President

---

## BOOK REVIEWS

*20th Century Henry County, Georgia* by Freda R. Turner, 559 Jerry Steele Lane, McDonough, GA 30253 (770-957-9802). Abstracted and compiled by author; copyrighted 2000. Library of Congress Catalog Number 00110049; ISBN Number 1-883793-39-4. Hardbound, gold embossed, 6" x 9", 513 pages. Photographs; maps; 43-page Index, 14-page Addendum. \$40 plus \$5 for postage and handling from author.

*20th Century Henry County, Georgia* is a genealogist's dream for anyone who had ancestors in that county. Important data as well as heart-warming personal notes may be found in the pages of the county newspapers between 1900 and 2000.

However, this reader found it disappointing to encounter long lists of surnames without first names, and not even alphabetized for the reader's convenience.

Later on, a section of alphabetized men gives excellent short obituaries. Apparently, the only way to find a certain man is to locate him in the Index-which seems to be accurate. But it is a bit startling to see Ronald Reagan's middle name given as President, and that Mr. Nutmeg bears the first name of Store. Was Ola baptized Baseball?

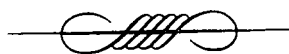
The arrangement of dates of newspaper excerpts seems rather erratic, but can be figured out eventually.

Many aspects of life are revealed in Henry County newspapers, including the Camp Creek train wreck; the death of Floyd Collins; names of the Henry Countians who fought in Confederate units during the Civil War and those in World War I; Ministers; obituaries 1900-95 (in alphabetical order) - dozens of interesting items are scattered throughout the book.

Apparently this book was compiled hastily, after several years of hard research, with many misspelled words and typographical errors, not to mention distorted syntax. But I am sure that it will delight many lucky readers who will be able to locate their ancestors in Henry County, Georgia.

This volume will be given to the Texas State Library Genealogy Collection as a contribution in the compiler's name.

Helen H. Rugeley



*Descendants of Bartholomew Stovall [1655-1722] [First Five American Generations]* compiled by Donald E. Bishop; Publ. & © 1999 Publ. by Stovall Family Assn., Inc.; Paperbound, 8 ½" x 11"; 396 pp.; Name Index, 4 Appendices; contact compiler @ 21 Flem Phillips Rd., Laurel MS 39443-9142, 601-763-8197, stovalldata@c-gate.net

This publication is an accumulation of descendants' charts of Bartholomew Stovall and is excellently formatted by descendant number (up to #5252, Luke Wiles, Jr. b. ca 1790). Four appendices contain some supplementary information on descendant families. The review copy is being donated to TSL in the compiler's name.

WMK

## HOUSE, READ AND BRICE GENEALOGIES

New AGS member Barbara Peters Pargament of Dayton NV has submitted a sheaf of genealogical data on the above 3 families, some members of which settled in Texas. Material on the Isaac Howze-John House line is shown below and on the next 13 pages; the Read and Brice families will be carried in a future issue.—Ed.

## PEDIGREE CHART

13 Nov 2000

Chart no. 1

## Ordinance Codes:

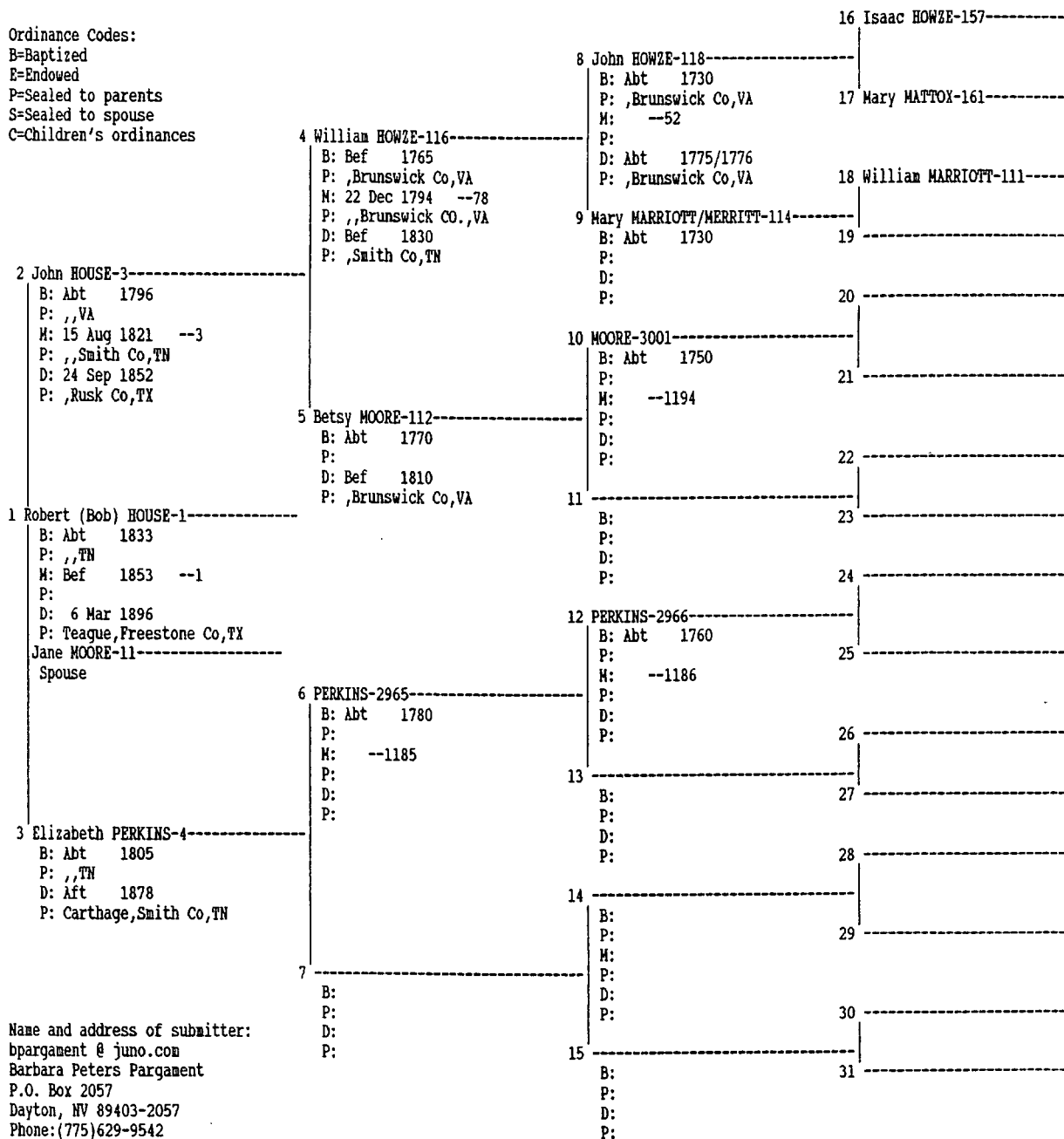
B=Baptized

E=Endowed

P=Sealed to parents

S=Sealed to spouse

C=Children's ordinances



## PEDIGREE CHART

21 Sep 2000

Chart no. 1

## Ordinance Codes:

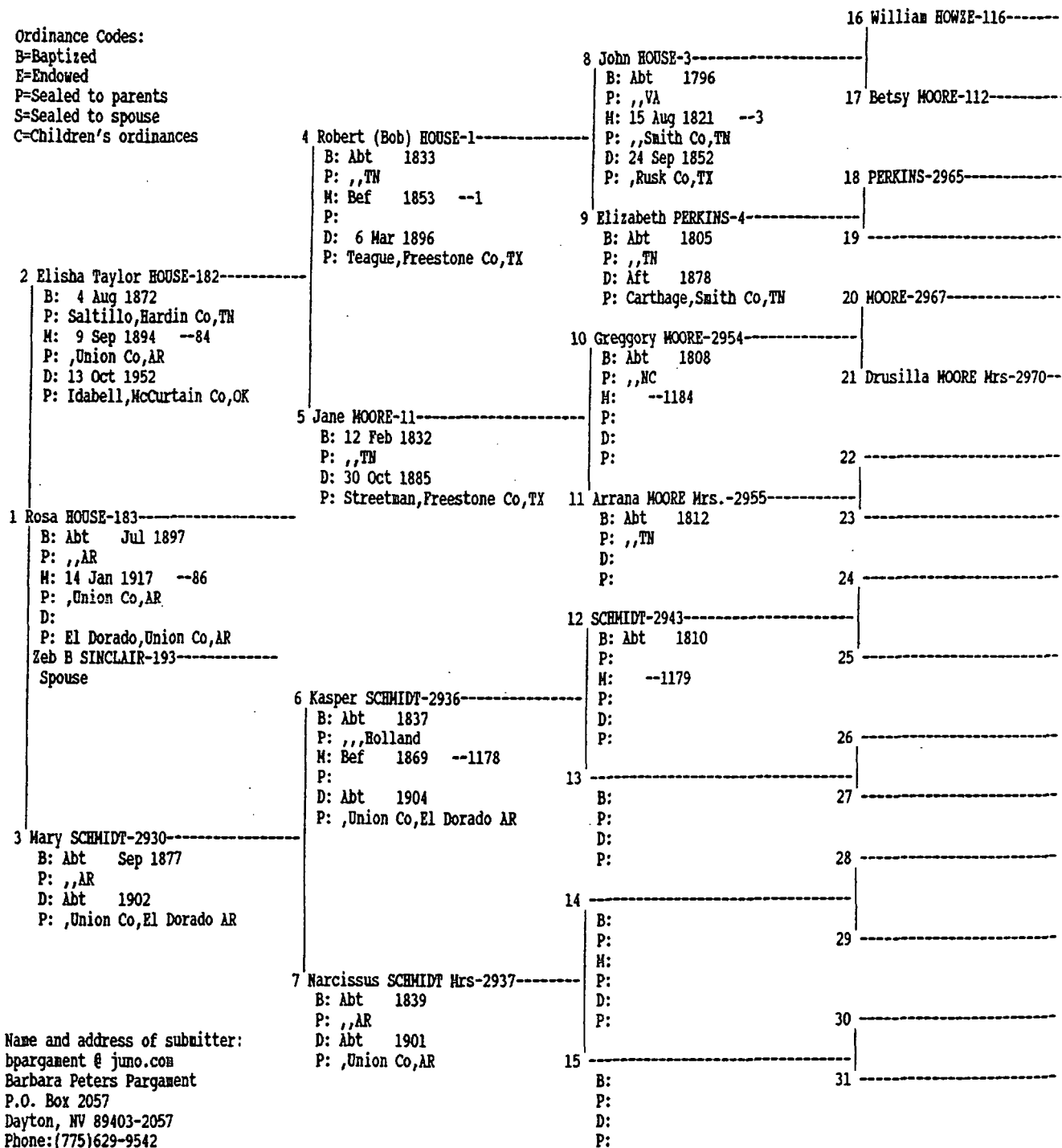
B=Baptized

E=Endowed

P=Sealed to parents

S=Sealed to spouse

C=Children's ordinances



## FAMILY GROUP RECORD-1

HUSBAND Robert (Bob) HOUSE-1 LDS ORDINANCE DATA

BORN:	Abt 1833	PLACE:	,,TN	B:	
CHR.:		PLACE:		E:	
DIED:	6 Mar 1896	PLACE:	Teague, Freestone Co, TX	SP:	
BUR.:	6 Mar 1896	PLACE:	George Cem, Freestone Co, Teague TX	SS:	
MARR:	Bef 1853	PLACE:		has other marriage(s)	
FATHER:	John HOUSE-3			PARENTS' MRIN:	3
MOTHER:	Elizabeth PERKINS-4				

WIFE Jane MOORE-11

BORN:	12 Feb 1832	PLACE:	,,TN	B:	
CHR.:		PLACE:		E:	
DIED:	30 Oct 1885	PLACE:	Streetman, Freestone Co, TX	SP:	
BUR.:	30 Dec 1885	PLACE:	Cade Cem, Freestone Co, Streetman TX		
FATHER:	Greggory MOORE-2954			PARENTS' MRIN:	1184
MOTHER:	Arrana MOORE Mrs.-2955				

## CHILDREN

1. NAME: Victoria C HOUSE-140

----	BORN:	Abt 1854	PLACE:	,,TN	B:	
F	CHR.:		PLACE:		E:	
	DIED:		PLACE:		SP:	
	BUR.:		PLACE:	Nashville Cem, McCurtain Co, Nashville AR		
	SPOUSE:	Theodore William WALLACE-147			MRIN:	55
	MARR:		PLACE:		SS:	

2. NAME: Jasper Newton HOUSE-144

----	BORN:	Abt 1855	PLACE:	, Hardin Co, TN	B:	
M	CHR.:		PLACE:		E:	
	DIED:	25 Jan 1899	PLACE:	El Dorado, Union Co, AR	SP:	
	BUR.:	25 Jan 1899	PLACE:	Bethel Cem, Union Co, El Dorado AR		
	SPOUSE:	Charlotte "Lottie" Marlinda ROBBINS-136			MRIN:	61
	MARR:	28 Mar 1880	PLACE:	Corisania, Navarre Co, TX	SS:	

3. NAME: Francis HOUSE-142

----	BORN:	Abt 1861	PLACE:	,,TN	B:	
M	CHR.:		PLACE:		E:	
	DIED:		PLACE:		SP:	
	BUR.:		PLACE:			
	SPOUSE:					
	MARR:		PLACE:		SS:	

4. NAME: J.M. James Mac HOUSE-125

----	BORN:	22 Feb 1863	PLACE:	,,TN	B:	
M	CHR.:		PLACE:		E:	
	DIED:	17 Oct 1885	PLACE:	, Freestone Co, TX	SP:	
	BUR.:		PLACE:	Cade Cemetery, Freestone Co, Streetman TX		
	SPOUSE:					
	MARR:		PLACE:		SS:	

bpargament @ junio.com  
Barbara Peters Pargament  
P.O. Box 2057  
Dayton, NV 89403-2057  
Phone: (775) 629-9542

Relationship to:

Husband \_\_\_\_\_

Wife \_\_\_\_\_

Date prepared: 24 Nov 2000

## FAMILY GROUP RECORD-1

24 Nov 2000

=====

HUSBAND Robert (Bob) HOUSE-1

Yr of Birth 1833

WIFE Jane MOORE-11

Yr of Birth 1832

## =====

## CHILDREN (continued)

## =====

## 5. NAME: Jehu M "J.E.H." HOUSE-130

---- BORN: 18 Jan 1865

PLACE: ,,TN

B:

M CHR.:

PLACE:

E:

DIED: 5 Jan 1890

PLACE: ,Freestone Co,TX

SP:

BUR.:

PLACE: Cade Cem,Freestone Co,Streetman TX

SPOUSE:

MARR:

PLACE:

SS:

## =====

## 6. NAME: Clementine HOUSE-146

---- BORN: 18 Jan 1865

PLACE: ,,TN

B:

F CHR.:

PLACE:

E:

DIED:

PLACE:

SP:

BUR.:

PLACE:

SPOUSE:

MARR:

PLACE:

SS:

## =====

## 7. NAME: Thomas D HOUSE-134

---- BORN: Abt 1867

PLACE: ,,TN

B:

M CHR.:

PLACE:

E:

DIED:

PLACE:

SP:

BUR.:

PLACE:

SPOUSE:

MARR:

PLACE:

SS:

## =====

## 8. NAME: Sarah HOUSE-138

---- BORN: Feb 1870

PLACE: ,,TN

B:

F CHR.:

PLACE:

E:

DIED:

PLACE:

SP:

BUR.:

PLACE:

SPOUSE:

MARR:

PLACE:

SS:

## =====

## 9. NAME: Annie Lou HOUSE-126

---- BORN: 14 Feb 1870

PLACE: ,,TN

B:

F CHR.:

PLACE:

E:

DIED: 17 Jan 1906

PLACE: Teague,Freestone Co,TX

SP:

BUR.:

PLACE: George Cem,Freestone Co,Teague TX

SPOUSE: John Chaffin GEORGE-139

MRIN: 74

MARR: 23 Feb 1889

PLACE: ,Freestone Co,TX

SS:

## =====

## 10. NAME: Elisha Taylor HOUSE-182

---- BORN: 4 Aug 1872

PLACE: Saltillo,Hardin Co,TN

B:

M CHR.:

PLACE:

E:

DIED: 13 Oct 1952

PLACE: Idabell,McCurtain Co,OK

SP:

BUR.:

PLACE: Canfield Cem,McCurtain Co,OK

has other marriage(s)

SPOUSE: Mary SCHMIDT-2930

MRIN: 84

MARR: 9 Sep 1894

PLACE: ,Union Co,AR

SS:

## =====

## 11. NAME: Hettie HOUSE-162

---- BORN: Abt 1874

PLACE:

B:

F CHR.:

PLACE:

E:

DIED:

PLACE:

SP:

BUR.:

PLACE:

SPOUSE:

MARR:

PLACE:

SS:

FAMILY GROUP RECORD-1  
DOCUMENTATION

24 Nov 2000

HUSBAND	Robert (Bob) HOUSE-1	Yr of Birth 1833
WIFE	Jane MOORE-11	Yr of Birth 1832

HUSBAND - Robert (Bob) HOUSE-1

Death records-6 Mar 1896- Headstone at George Cem between Teague and Fairfield,  
about two miles north of US 84 on Clay Hill Road across from Freestone Country  
Club

## CENSUS-1890-

Robert (57), Frances ( ), Elijah (18), Hettie (16),

MARRIAGE- 13 January 1886-to Mrs. Frances C.F. Keel

CENSUS- 1880-Freestone Co, Texas-55 th Dist.,Supr Dist#44, E.D.#55, 12 th and  
14 th Day of June, 1880, Page 18, Line 48,Dwelling/House #179

Robert (47), Jane (47), James M.(17), Clemie (15), John M.(16), Thomas (12),  
Annie (10), Elijah (8), Hettie (6)

## CENSUS- 1870-Hardin Co, Tennessee

Robert (33), Jane (33), Victoria (16), Jasper N. (13), Francis (9), James M.  
(7), Jehu M. (5), Clementine (5), Thomas D. (3), Sarah (3/12)

## CENSUS- 1860-

Robert (23), Jane (23), Victoria (6), Jasper N. (3)

MARRIAGE- abt 1853-Jane Moore

CENSUS- 1850 -Smith Co, Tenn, South Division, 9 th day of October, 1850

Robert (18) in Household of John (54),Elizabeth (49), Green (20), Pleasant (16)  
John (14), Sarah (12), Harrison (8), Mary (5)

Greggory Moore Family in same area (1850 Census Smith Co,Tenn)

## !CENSUS- 1840 -

Robert (8)

## Other marriages:

13 Jan 1886 Francis C F KEEL-2

MRIN: 2

WIFE - Jane MOORE-11

DEATH- 30 Oct 1885-Tombstone inscription

CEMETERY-Cade Cemetery Freestone Co.Records from Dallas Public Library

The chapel entrance is in Navarro Co but the cemetery is in Freestone Co. The  
cemetery is located on FM 246, one mile west of Interstate 45

CENSUS- 1880-Freestone Co, Texas-55 th Dist.,Supr Dist#44, E.D.#55, 12 th and  
14 th Day of June, 1880, Page 18, Line 48,Dwelling/House #179

Robert (47), Jane (47), James M.(17), Clemie (15), John M.(16),  
Thomas (12), Annie (10), Elijah (8), Hettie (6)

## CENSUS- 1870-Hardin Co, Tennessee,

Robert (33) Jane (33) Victoria (16) Jasper N. (13) Francis (9)  
James M.(7) Jehu M. (5) Clementine (5) Thomas D. (3) Sarah (3/12)

## CENSUS-1860-

FAMILY GROUP RECORD-1  
DOCUMENTATION

24 Nov 2000

HUSBAND	Robert (Bob) HOUSE-1	Yr of Birth 1833
WIFE	Jane MOORE-11	Yr of Birth 1832

MARRIAGE- bef 1853

CENSUS-1850-Smith Co, Tenn, Dwelling #1032, FHL Microfilm # 444852  
Greggory (42) Arrana (38) George (18) Jane (16) Mary (14) John (12)  
Elizabeth (10) William (8) Thomas (5) Martha (3) Appears to be Jane  
Moore family

CHILD 1 - Victoria C HOUSE-140

CENSUS-1870-Hardin Co, Tennessee,  
Robert (33), Jane (33), Victoria (16), Jasper N. (13), Francis (9), James M. (7),  
Jehu M. (5), Clementine (5), Thomas D. (3), Sarah (3/12)

CENSUS- 1880-Freestone Co, Texas-55 th Dist., Supr Dist #44, E.D. #55, 12 th and  
14 th Day of June, 1880, Page 18, Line 48, Dwelling/House #179  
Robert (47), Jane (47), James M. (17), Clemie (15), John M. (16), Thomas (12),  
Annie (10), Elijah (8), Hettie (6)

CHILD 2 - Jasper Newton HOUSE-144

CENSUS-1900 Union Co, Ark, 12 th Census, Supr Dist 36, E.D. #126, Henderson Twp  
Junction City (town), 7 th day of June, 1900, Census pg 131  
L.H. (39)-widow-Elbert (19) Robert (15) Annie (12) Clemmie (7)  
Nona (6) Willie (2)

DEATH-25 Jan 1899-Union Co Cem Records-FHL Book 976.761 v.3u, Bethel Cem.,  
Old Rear Road, off Hwy 167 (Calion Hwy) six (6) miles north of El Dorado

CENSUS- 1890-  
Jasper N. (33) Lottie M. (29) Elbert (9) Robert (5) Annie (2)

CENSUS- 1880-  
Jasper N. (23) Lottie M. (19)

MARRIAGE- 28 Mar 1880-Corsicana, Navarro Co, TX-Navarro County Marriages  
Vol 111, Line 455

CENSUS-1870-Hardin Co, Tennessee, Robert (33), Jane (33), Victoria (16),  
Jasper N. (13), Francis (9), James M. (7), Jehu M. (5), Clementine (5), Thomas  
D. (3), Sarah (3/12)

CHILD 3 - Francis HOUSE-142

CENSUS-1870-Hardin Co, Tennessee, Francis is 9 yrs old, male born Tennessee,  
living with Robert (33), Jane (33), Victoria (16), Jasper N. (13), James M. (7),  
Jehu M. (5), Clementine (5), Thomas D. (3), Sarah (3/12)

CHILD 4 - J.M. James Mac HOUSE-125

CENSUS-1870-Hardin Co, Tennessee,  
Robert (33), Jane (33), Victoria (16), Jasper N. (13), Francis (9), James M. (7),  
Jehu M. (5), Clementine (5), Thomas D. (3), Sarah (3/12)

CHILD 5 - Jehu M "J.E.H." HOUSE-130

Cade Cemetery Records from Dallas Public Library Freestone Co TX



FAMILY GROUP RECORD-1  
DOCUMENTATION

24 Nov 2000

HUSBAND	Robert (Bob) HOUSE-1	Yr of Birth 1833
WIFE	Jane MOORE-11	Yr of Birth 1832

CENSUS-1870-Hardin Co, Tennessee,  
Robert (33), Jane (33), Victoria (16), Jasper M.(13), Francis (9), James M.(7),  
Jehu M.(5), Clementine (5), Thomas D.(3), Sarah (3/12)

CHILD 6 - Clementine HOUSE-146

CENSUS-1870-Hardin Co, Tennessee,  
Robert (33), Jane (33), Victoria (16), Jasper M.(13), Francis (9), James M.(7),  
Jehu M.(5), Clementine (5), Thomas D.(3), Sarah (3/12)

CHILD 7 - Thomas D HOUSE-134

CENSUS-1870-Hardin Co, Tennessee,  
Robert (33), Jane (33), Victoria (16), Jasper M.(13), Francis (9), James M.(7),  
Jehu M.(5), Clementine (5), Thomas D.(3), Sarah (3/12)

CHILD 8 - Sarah HOUSE-138

CENSUS-1870-Hardin Co, Tennessee,  
Robert (33), Jane (33), Victoria (16), Jasper M.(13), Francis (9), James M.(7),  
Jehu M.(5), Clementine (5), Thomas D.(3), Sarah (3/12)

CHILD 9 - Annie Lou HOUSE-126

Death Records-Headstone at George Cem between Teague and Fairfield, about two  
miles north of US Hwy 84 on Clay Hill Road across from Freestone Country Club

CENSUS- 1880-Freestone Co, Texas-55 th Dist., Supr Dist#44, E.D.#55, 12 th and  
14 th Day of June, 1880, Page 18, Line 48, Dwelling/House #179  
Robert (47), Jane (47), James M.(17), Clemie (15), John M.(16), Thomas (12),  
Annie (10), Elijah (8), Hettie (6)

CHILD 10 - Elisha Taylor HOUSE-182

NOTE--E.T. House: Had a badge - Served as Constable or Government Official  
He traveled with a Carnival and Medicine Show. He was known as a Drummer or  
Salesman, was a Ventriloquist and He "Hand made his own puppets"-Daughter,  
Eunice House Peters, has pictures of the puppets. His Daughter, Rosa, married  
Zeb Sinclair. Rosa worked at a Bank in Idabel.

CEMETERY- Canfield Cemetery is located on S. Central Street HWY 70/JCT  
259. Near Canfield Santary Land Fill Road/ Smith Equip.Co.

DEATH-Idabel, Okla

CENSUS- 1920- Scott Co, Ark-Blackfork Township, House #34  
Elisha (53), Dora (32), Effie (12), May (11), Clara (9), Ollan (6), Grace (4),  
Adell (1)

CENSUS- 1910-

MARRIAGE- 1905-E.T. House (28), Heavener, Indian Territory, married Dora Cline  
(19), Blackfork, Scott Co., Ark. Married at Bill Bates house at Jones  
Creek, (Township) Brawley, Ark, Feb 25, 1905. Marriage Certificate in possession  
of Daughter: Eunice House Peters.

FAMILY GROUP RECORD-1  
DOCUMENTATION

24 Nov 2000

HUSBAND	Robert (Bob) HOUSE-1	Yr of Birth 1833
WIFE	Jane MOORE-11	Yr of Birth 1832

CENSUS-1900, Union Co, Ark, -Microfilm #T623, Pg 87, Roll#78  
Supr.Dist#6,E.D.#126,census pg # 131A -Elijah (28) Mary (22) Rosa (2) Elizabeth  
(4/12), Marys Father from Holland, Mother from ARK, married 6 yrs, 3 children/  
2 living. Henderson Twp, Junction City, June 7, 1900

MARRIAGE-9 Sep 1894-"E.T.House,22, Cargile, Union Co, AR to Miss Mary  
Schmidt,17, Champagnolle, Union Co, AR. Married by J.G.McCain, MG 9 Sep 1894.  
Filed 10 Sep 1894. Recorded 10 Sep 1894 on page J-377. J.J. Preston  
security."Sept the 6 th This is to certify that we K. Schmidt & N. Schmidt is  
willing to the marriage of E.T. House Mary Schmidt." SOURCE-Union County,Ark  
Marriage Records Volume II, 1878-1899, Union County Genealogical Society.

CENSUS- 1890-

CENSUS- 1880-Freestone Co, Texas-55 th Dist.,Supr Dist#44, E.D.#55, 12 th and  
14 th Day of June, 1880, Page 18, Line 48,Dwelling/House #179  
Robert (47), Jane (47), James M.(17), Clemie (15), John M.(16), Thomas (12),  
Annie (10), Elijah (8), Hettie (6)

Other marriages:

23 Feb 1905 Dora Barbara CLINE-184

MRIN: 85

CHILD 11 - Hettie HOUSE-162

NOTE--

CEMETERY-

CENSUS-1890

DEATH-

CENSUS- 1880-Freestone Co, Texas-55 th Dist.,Supr Dist#44, E.D.#55, 12 th and  
14 th Day of June, 1880, Page 18, Line 48,Dwelling/House #179  
Robert (47), Jane (47), James M.(17), Clemie (15), John M.(16), Thomas (12),  
Annie (10), Elijah (8), Hettie (6)

## FAMILY GROUP RECORD-3

HUSBAND John HOUSE-3			LDS ORDINANCE DATA
BORN: Abt 1796	PLACE: ,,VA		B:
CHR.: 24 Sep 1852	PLACE: ,Rusk Co,TX		E:
BUR.: 15 Aug 1821	PLACE: ,,Smith Co,TN		SP:
FATHER: William HOWZE-116			SS:
MOTHER: Betsy MOORE-112			PARENTS' MRIN: 78
=====			
WIFE Elizabeth PERKINS-4			
BORN: Abt 1805	PLACE: ,,TN		B:
CHR.: Aft 1878	PLACE: Carthage,Smith Co,TN		E:
BUR.: Aft 1878	PLACE: ,Smith Co,TN		SP:
FATHER: PERKINS-2965			SS:
MOTHER:			PARENTS' MRIN: 1185
=====			
CHILDREN			
=====			
1. NAME: William H HOUSE-1550			
BORN: Abt 1826	PLACE: ,,TN		B:
M CHR.: 20 Aug 1850	PLACE: ,Harrison Co,TX		E:
DIED:			SP:
BUR.:			SS:
SPOUSE: Sydney A GARRETT-3064			MRIN: 1223
MARR: 20 Aug 1850	PLACE: ,Harrison Co,TX		SS:
=====			
2. NAME: Green HOUSE-5			
BORN: Abt 1830	PLACE: ,,TN		B:
M CHR.: 6 Mar 1896	PLACE: Teague,Freestone Co,TX		E:
DIED: 6 Mar 1896	PLACE: George Cem,Freestone Co,Teague TX		SP:
BUR.: 13 Jan 1886	PLACE: ,,Freestone,TX		SS:
SPOUSE: Francis C F KEEL-2			has other marriage(s)
MARR: 13 Jan 1886	PLACE: ,,Freestone,TX		MRIN: 2
=====			
3. NAME: Sydoria HOUSE-1935			
BORN: Abt 1834	PLACE:		B:
F CHR.: 6 Mar 1896	PLACE:		E:
DIED: 6 Mar 1896	PLACE:		SP:
BUR.: 13 Jan 1886	PLACE:		SS:
SPOUSE:			
MARR:	PLACE:		
=====			
bpargament @ juno.com		Relationship to:	
Barbara Peters Pargament		Husband _____	
P.O. Box 2057		Wife _____	
Dayton, NV 89403-2057		Date prepared: 13 Nov 2000	
Phone:(775)629-9542			

## FAMILY GROUP RECORD-3

13 Nov 2000

HUSBAND John HOUSE-3	Yr of Birth 1796
WIFE Elizabeth PERKINS-4	Yr of Birth 1805

## CHILDREN (continued)

5. NAME: Pleasant B HOUSE-6		
--- BORN: 29 Nov 1834	PLACE: ,Smith Co,TN	B:
F CHR.:	PLACE:	E:
DIED: 9 Aug 1864	PLACE: ,Smith Co,TN	SP:
BUR.: 9 Aug 1864	PLACE: McClanahan-ManCa,Smith Co,Grant TN	
SPOUSE:		
MARR:	PLACE:	SS:
6. NAME: John HOUSE-7		
--- BORN: Abt 1836	PLACE: ,,TN	B:
H CHR.:	PLACE:	E:
DIED:	PLACE:	SP:
BUR.:	PLACE:	
SPOUSE:		
MARR:	PLACE:	SS:
7. NAME: Sarah HOUSE-8		
--- BORN: Abt 1838	PLACE: ,,TN	B:
F CHR.:	PLACE:	E:
DIED:	PLACE:	SP:
BUR.:	PLACE:	
SPOUSE:		
MARR:	PLACE:	SS:
8. NAME: HARRISON HOUSE-9		
--- BORN: Abt 1842	PLACE: ,,TN	B:
H CHR.:	PLACE:	E:
DIED:	PLACE:	SP:
BUR.:	PLACE:	
SPOUSE:		
MARR:	PLACE:	SS:
9. NAME: Mary A HOUSE-10		
--- BORN: Abt 1845	PLACE: ,,TN	B:
F CHR.:	PLACE:	E:
DIED:	PLACE:	SP:
BUR.:	PLACE:	
SPOUSE:		
MARR:	PLACE:	SS:

FAMILY GROUP RECORD-3  
DOCUMENTATION

13 Nov 2000

HUSBAND	John HOUSE-3	Yr of Birth 1796
WIFE	Elizabeth PERKINS-4	Yr of Birth 1805

HUSBAND - John HOUSE-3

NOTE- Info provided by Belinda Hayes-Veteran of War 1812-films#983172/983168

DEATH- 1852 - 24 Sep 1852-Rusk Co, Texas

RESIDENCE-1851-Smith Co, Tenn

CENSUS-1850-Smith Co, TN, FHL Microfilm # 444852, 9 Oct 1850, South Division  
Dwelling & Family #396-John (54), Elizabeth (49), Green (20), Robert (18)  
Pleasant (16), John (14), Sarah (12), Harrison (8), Mary (5)CENSUS- 1840-Smith Co, TN, FHL Microfilm #0024549, No.B,No.4,pg 220:  
John (44) Elizabeth (39) Green (10) Robert (7) Pleasant (6) John (4) Sarah (2)Line: 17- John House w/212001-111101 & 3 slaves  
Line: 16- Sarah Perkins w/00001-000000001 & 5 slaves  
Line: 2- Agnes House w/221-0000010001CENSUS - 1830 -  
John (34) Elizabeth (29) Green (1)

MARRIAGE - 1821 - 15 Aug 1821, Smith Co, Tenn

CENSUS - 1820 -  
John (24)MILITARY- 1814- 29 Aug 1814-3 Dec 1814  
Veteran of War 1812 - -FHL-Microfilm # 0840477, WC#10186 & WO# 19516,  
Pvt --Capt Rice's Co VA Mil (copy in file)CENSUS - 1810  
John (14)CENSUS - 1800  
John (4)WIFE - Elizabeth PERKINS-4

Info provided by Belinda Hayes based on 1812 Widows Pension records #10,186 &amp;

RESIDENCE- 1878 -Smith Co, (PO Carthage) Tenn-Widows Residence record)

CENSUS- 1870-  
Elizabeth (69)CENSUS-1860 TX Census #20-372 shows children: Wm H age 32,Sydoria age 26,  
Mary age 15 thus other children from 1821-1830CENSUS- 1860-  
Elizabeth (59)

RESIDENCE- 1856-Smith Co, Tenn (War of 1812-Widows Residence record)

FAMILY GROUP RECORD-3  
DOCUMENTATION

13 Nov 2000

---

HUSBAND	John HOUSE-3	Yr of Birth 1796
WIFE	Elizabeth PERKINS-4	Yr of Birth 1805

---

DEATH-SPOUSE- 1852-Rusk Co, Texas

CENSUS-1850-Smith Co, TN, FHL Microfilm # 444852, 9 Oct 1850, South Division,  
Dwelling & Family #396-John (54), Elizabeth (49), Green (20), Robert (18),  
Pleasant (16), John (14), Sarah (12), Harrison (8), Mary (5)CHILD 1 - William H HOUSE-1550

Info provided by Belinda Hayes

Info provided by Belinda Hayes based on 1812 Widows Pension records #10,186 &amp;

CENSUS-1880-Smith Co, TN, William House (54) w/ wife-Sydney A (50) and  
sis-in-law Risetta Garrett (43)

CENSUS -1870- William (42)

CENSUS-1860 TX Census #20-372 shows children: Wm H age 32, Sydoria age 26, Mary  
age 15 thus other children from 1821-1830CENSUS- 1850-  
William (22)CENSUS-1850-Smith Co, TN, FHL Microfilm # 444852, 9 Oct 1850, South Division,  
Dwelling & Family #396-John (54), Elizabeth (49), Green (20), Robert (18),  
Pleasant (16), John (14), Sarah (12), Harrison (8), Mary (5)CHILD 2 - Green HOUSE-5

Info provided by Belinda Hayes based on 1812 Widows Pension records #10,186 &amp;

CENSUS- 1870 -  
Green (40)CENSUS-1860 TX Census #20-372 shows children: Wm H age 32, Sydoria age 26, Mary  
age 15 thus other children from 1821-1830CENSUS- 1860 -  
Green (30)CENSUS-1850-Smith Co, TN, FHL Microfilm # 444852, 9 Oct 1850, South Division,  
Dwelling & Family #396-John (54), Elizabeth (49), Green (20), Robert (18),  
Pleasant (16), John (14), Sarah (12), Harrison (8), Mary (5)CHILD 3 - Robert (Bob) HOUSE-1Death records-6 Mar 1896- Headstone at George Cem between Teague and Fairfield,  
about two miles north of US 84 on Clay Hill Road across from Freestone Country  
ClubCENSUS-1890-  
Robert (57), Frances ( ), Elijah (18), Hettie (16),

MARRIAGE- 13 January 1886-to Mrs. Frances C.F. Keel

FAMILY GROUP RECORD-3  
DOCUMENTATION

13 Nov 2000

HUSBAND	John HOUSE-3	Yr of Birth 1796
WIFE	Elizabeth PERKINS-4	Yr of Birth 1805

CENSUS- 1880-Freestone Co, Texas-55 th Dist., Supr Dist #44, E.D. #55, 12 th and 14 th Day of June, 1880, Page 18, Line 48, Dwelling/House #179  
Robert (47), Jane (47), James M. (17), Clemie (15), John M. (16), Thomas (12), Annie (10), Elijah (8), Hettie (6)

CENSUS- 1870-Hardin Co, Tennessee  
Robert (33), Jane (33), Victoria (16), Jasper N. (13), Francis (9), James M. (7), Jehu M. (5), Clementine (5), Thomas D. (3), Sarah (3/12)

CENSUS- 1860-  
Robert (23), Jane (23), Victoria (6), Jasper N. (3)

MARRIAGE- abt 1853-Jane Moore

CENSUS- 1850 -Smith Co, Tenn, South Division, 9 th day of October, 1850  
Robert (18) in Household of John (54), Elizabeth (49), Green (20), Pleasant (16)  
John (14), Sarah (12), Harrison (8), Mary (5)  
Greggory Moore Family in same area (1850 Census Smith Co, Tenn)  
!CENSUS- 1840 -  
Robert (8)

Other marriages:

Bef 1853 Jane MOORE-11

WRIN: 1

CHILD 4 - Sydoria HOUSE-1935

Info provided by Belinda Hayes based on 1860 census-#20-372

CENSUS-1860 TX Census #20-372 shows children: Wm H age 32, Sydoria age 26, Mary age 15 thus other children from 1821-1830

CENSUS-1850-Smith Co, TN, FHL Microfilm # 444852, 9 Oct 1850, South Division, Dwelling & Family #396-John (54), Elizabeth (49), Green (20), Robert (18), Pleasant (16), John (14), Sarah (12), Harrison (8), Mary (5)

CHILD 5 - Pleasant B HOUSE-6

Info provided by Belinda Hayes based on 1860 census-#20-372

CENSUS-1860 TX Census #20-372 shows children: Wm H age 32, Sydoria age 26, Mary age 15 thus other children from 1821-1830

CENSUS- 1870-  
Pleasant (36)

CENSUS- 1860-  
Pleasant (26)

MARRIAGE-

CENSUS-1850-Smith Co, TN, FHL Microfilm # 444852, 9 Oct 1850, South Division, Dwelling & Family #396-John (54), Elizabeth (49), Green (20), Robert (18), Pleasant (16), John (14), Sarah (12), Harrison (8), Mary (5)

FAMILY GROUP RECORD-3  
DOCUMENTATION

13 Nov 2000

---

HUSBAND	John HOUSE-3	Yr of Birth 1796
WIFE	Elizabeth PERKINS-4	Yr of Birth 1805

---

CHILD 6 - John HOUSE-7

Info provided by Belinda Hayes based on 1860 census-#20-372

CENSUS- 1870-  
John (34)

CENSUS-1860 TX Census #20-372 shows children: Wm H age 32, Sydoria age 26, Mary age 15 thus other children from 1821-1830

CENSUS- 1860-  
John (24)

## MARRIAGE-

CENSUS-1850-Smith Co, TN, FHL Microfilm # 444852, 9 Oct 1850, South Division, Dwelling &amp; Family #396-John (54), Elizabeth (49), Green (20), Robert (18), Pleasant (16), John (14), Sarah (12), Harrison (8), Mary (5)

CHILD 7 - Sarah HOUSE-8

Info provided by Belinda Hayes based on 1860 census-#20-372

CENSUS- 1870-  
Sarah (32)

CENSUS-1860 TX Census #20-372 shows children: Wm H age 32, Sydoria age 26, Mary age 15 thus other children from 1821-1830

CENSUS- 1860-  
Sarah (22)

## MARRIAGE-

CENSUS-1850-Smith Co, TN, FHL Microfilm # 444852, 9 Oct 1850, South Division, Dwelling &amp; Family #396-John (54), Elizabeth (49), Green (20), Robert (18), Pleasant (16), John (14), Sarah (12), Harrison (8), Mary (5)

CHILD 8 - HARRISON HOUSE-9

Info provided by Belinda Hayes based on 1860 census-#20-372

CENSUS-1870-  
Harrison (28)

## MARRIAGE-

CENSUS-1860 TX Census #20-372 shows children: Wm H age 32, Sydoria age 26, Mary age 15 thus other children from 1821-1830

CENSUS-1860-  
Harrison (18)

CENSUS-1850-Smith Co, TN, FHL Microfilm # 444852, 9 Oct 1850, South Division,

---

Dwelling & Family #396-John (54), Elizabeth (49), Green (20), Robert (18), Pleasant (16), John (14), Sarah (12), Harrison (8), Mary (5)

---

CHILD 9 - Mary A HOUSE-10

Info provided by Belinda Hayes based on 1860 census-#20-372

CENSUS -1870 -  
Mary (25)

## MARRIAGE -

CENSUS-1860 TX Census #20-372 shows children: Wm H age 32, Sydoria age 26, Mary age 15 thus other children from 1821-1830

CENSUS-1850-Smith Co, TN, FHL Microfilm # 444852, 9 Oct 1850, South Division, Dwelling & Family #396-John (54), Elizabeth (49), Green (20), Robert (18), Pleasant (16), John (14), Sarah (12), Harrison (8), Mary (5)

---



## Davidson & Littlepage Cemetery and Genealogy

### Davidson Littlepage Cemetery

Location: Austin, Texas  
near State Highway 71 and US 183

Unmarked Grave: I ran across this interesting article. How true it is remains to be seen. The Source: STIRPES, June 1996 - Caperton Findings by M.C. Forister, p. 48, which says, "Milton Thompson Caperton (4/24/1811 - 4/7/1907)...believed he died in Travis Co., TX but there is no death record, will obituary or anything on file concerning his death. He was the first pastor (preached from 1857-1872) at the Onion Creek Baptist Church in Austin, Travis Co., Texas. He also preached in Caldwell and Hays counties...In 1984, Milton's great-grandson, the late William Estel Perry, said there was a story about an old drunk man who disliked Rev. Milton Caperton. So the drunk man went to Milton's grave, which could be the oldest, smallest cemetery with a 6 foot chain-link fence built by the Highway Dept., on the corner next to Lockhart Hiway 183 that goes to Bergstrom AFB. It is on the left side going north into Austin downtown. There are five tombstones with six graves with the names Littlepage and Davidson, around two miles from the Caperton cemetery. He dug up Milton's grave, and took Milton's skull and threw it into his wagon and drove off with it.

### Davidson & Littlepage Cemetery

Davidson, Martha E. A.	May 3, 1816 - April 12, 1864
Davidson, L. C.	- Nov. 1857
Littlepage, Susan V.	April 23, 1804-Jan. 21, 1870
Martha E.	October 30, 1837-March 10, 1868
Davidson, James A.	August 8, 1836-December 8, 1856

Source: Travis County 19<sup>th</sup> Century Pioneers, page 14 and my visit to cemetery (pictures included)

Martha E. A. Davidson was born in Tennessee. Her maiden name was Martha Elizabeth A. Burditt. She was the daughter of Jesse F. Burditt and Mildred Crain Burditt. In 1817 they settled on the upper waters of Big Flat Creek on the south fork of the Duck River, Bedford County, TN. Her parents did not stay there very long and moved on to Limestone County, Alabama. They were there until 1829. Their youngest son, Jesse F. Burditt, Jr. was born in Limestone County. They then settled in New Herman, Bedford County. Their daughter, Martha, married Andrew M. Davidson, Bedford County, May 6, 1833 according to the Nashville Banner. It said she was the daughter of Jesse F. Burditt, Esq. Later in 1833, Jesse and Mildred Burditt headed for Texas. Martha and her husband, Andrew M. Davidson, stayed in Tennessee until 1839. They had two children: a daughter, Lavina C., born 3 May 1834 and a son, James, born 8 August 1836, TN and were citizens of Texas by 30 November 1839. Both those children are buried with their mother in the Davidson-Littlepage Cemetery.

Lavina C. Davidson, daughter of Andrew M. and Martha Elizabeth Burditt Davidson, came to Texas with her parents in 1839. She married John Eaton Campbell on 28 April 1853 at the Presbyterian Church in Austin. They had one daughter, Maggie, born 25 August 1854. Lavina C. Davidson Campbell died 17 August 1857. Maggie Campbell married Robert Emmett White on 18 Nov, 1874. They had five sons and one daughter. Robert Emmett White was Travis County Sheriff, Mayor and Judge.

James Davidson died at the age of 20. No records indicate he was married.

The Community of New Sweden, Travis County, Texas actually started on the Knight Ranch where Martha and James Knight were raised. Martha was the daughter of Lewis Knight and Emily Crain Knight. Emily Crain was the daughter of Ambrose and Mary (Polly) Crain. Ambrose Crain was a brother to Mildred Crain Burditt and his wife, Mary (Polly) Burditt Crain, was a sister to Jesse F. Burditt. Martha Knight Littlepage married James Arbuckle Littlepage. She died in 1857 and is buried in the Davidson-Littlepage Cemetery.

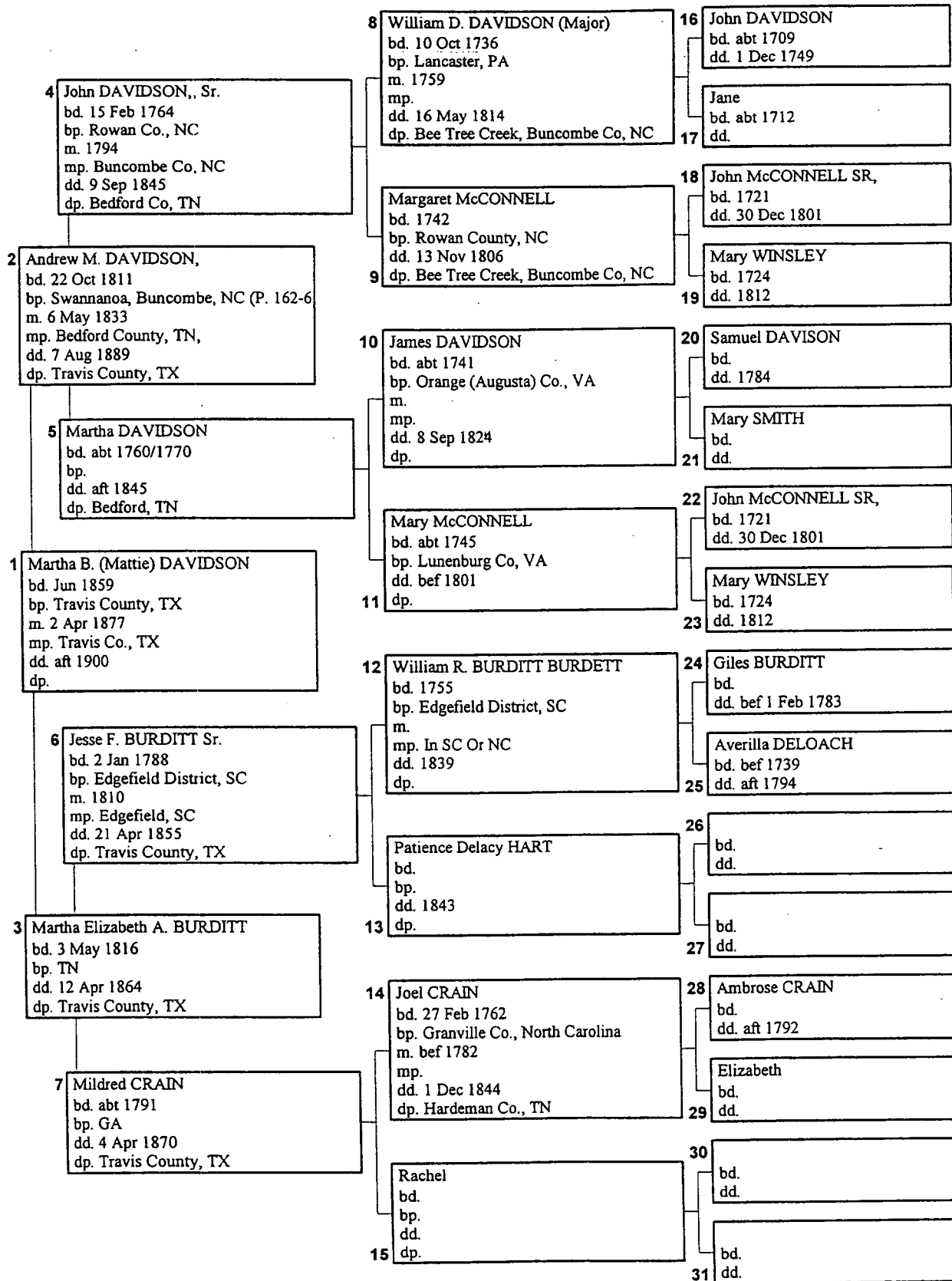
Susan V. Littlepage, born in Virginia, was Susanna Shanklin Van Arsdale. She married James Beverly Littlepage about 1816. He died in San Marcos, Travis County, Texas, in 1857. Their son, James Arbuckle Littlepage was the husband of Martha Knight.

It should be noted that James White, owner of the Broken Spoke, Austin, Texas, is also a descendant of the Davidson family. Lavina Davidson Campbell is his great grandmother and we are both great/great grandchildren of Martha Elizabeth A. Davidson

Nancy Beam Pexa  
nanpexa@aol.com  
8 Harvest Hill Road, West Simsbury, CT 06092

Ed. Note: We are pleased Ms. Pexa remitted this material on the Davidson-Littlepage line and its Texas links..  
Thanks.

# Pedigree Overview



Created: 18 Feb 2001 by EasyTree for Windows95

## Family Group Sheet

Page 1 of 4

<b>Name</b>	<b>Andrew M. DAVIDSON,<sup>1</sup></b>	
<b>Birth</b>	22 Oct 1811	Swannanoa, Buncombe, NC (P. 162-63) <sup>2, 3, 4, 5, 1</sup>
<b>Death</b>	7 Aug 1889	Travis County, TX <sup>6, 7, 8</sup>
<b>Burial</b>	8 Aug 1889	Oakwood, Austin, TX, Sec 2, Lot 509 & W 1/2 <sup>9, 10</sup>
<b>Religion</b>	Baptist	
<b>Father</b>	John DAVIDSON,, Sr. (1764-1845)	
<b>Mother</b>	Martha DAVIDSON (~1760->1845)	
<b>Other Spouses:</b>	Mary Elizabeth BERRY	
<b>Marriage</b>	6 May 1833	Bedford County, TN, <sup>11, 12</sup>
<b>Spouse</b>	<b>Martha Elizabeth A. BURDITT</b>	
<b>Birth</b>	3 May 1816	TN <sup>13</sup>
<b>Death</b>	12 Apr 1864	Travis County, TX <sup>13</sup>
<b>Burial</b>		Davidson & Littlepage Cemetery, Travis Cty, TX <sup>14, 13, 15, 16</sup>
<b>Father</b>	Jesse F. BURDITT Sr. (1788-1855)	
<b>Mother</b>	Mildred CRAIN (~1791-1870)	
<b>Children:</b>		
<b>1 F</b>	<b>Lavina C. DAVIDSON</b>	
<b>Birth</b>	3 May 1834	TN
<b>Death</b>	17 Nov 1857	Travis County, TX
<b>Spouse</b>	John Eaton CAMPBELL	
<b>Marriage</b>	28 Apr 1853	Austin, TX Presbyterian Church - Lic. #255
<b>2 M</b>	<b>James A. DAVIDSON</b>	
<b>Birth</b>	8 Aug 1836	TN <sup>13</sup>
<b>Death</b>	8 Dec 1856	Travis County, TX <sup>13</sup>
<b>3 F</b>	<b>Margaret J. DAVIDSON</b>	
<b>Birth</b>	1839	TX
<b>Death</b>	bef 11 Apr 1872	Caldwell Co., TX
<b>Spouse</b>	Edward Peyton HILL Sr.	
<b>Marriage</b>	21 Oct 1858	Travis, TX <sup>17</sup>
<b>4 M</b>	<b>John DAVIDSON</b>	
<b>Birth</b>	1844	TX
<b>Death</b>		Austin, TX (If Same John Davidson) <sup>18</sup>
<b>5 F</b>	<b>Almedia DAVIDSON</b>	
<b>Birth</b>	1846	TX
<b>Spouse</b>	William C. HILL	
<b>Marriage</b>	28 Jun 1865	Travis, TX <sup>17</sup>
<b>6 F</b>	<b>Alice DAVIDSON</b>	
<b>Birth</b>	15 Oct 1852	TX
<b>Death</b>	15 Feb 1886	
<b>Spouse</b>	Wade Morris SMITH	
<b>Marriage</b>	20 Dec 1871	Travis County, TX <sup>17</sup>
<b>7 M</b>	<b>Andrew M. DAVIDSON Jr. (Dr.)<sup>19</sup></b>	
<b>Birth</b>	1858	Travis, TX
<b>Death</b>	Jan 1896	Travis County, TX <sup>10</sup>
<b>Spouse</b>	Mattie C.	
<b>8 F</b>	<b>Martha B. (Mattie) DAVIDSON</b>	
<b>Birth</b>	Jun 1859	Travis County, TX
<b>Death</b>	aft 1900	
<b>Spouse</b>	Silas William BEAM	
<b>Marriage</b>	2 Apr 1877	Travis Co., TX <sup>20</sup>

Last Modified 18 Feb 2001

Created: 18 Feb 2001 by EasyTree for Windows95

Name	Andrew M. DAVIDSON, <sup>1</sup>
Spouse	Martha Elizabeth A. BURDITT
<b>*New [RESI] Notes for Andrew M. DAVIDSON,</b>	
2Bible Records indicate vitals for Major William Davidson and wife, Margaret McConnell, John Davidson m. Martha Davidson, d. of James, children of John and Martha.	
125 Oct. 1811 - Andrew Davidson on barren fork of Duck River, TN	
21A Report of Claims of the Second Class adjudicated by the Board of Land Commissions for San Augustine County Texas for the month of December 1839 - No. 789 - A.M. Davidson - 640 Acres - San Augustine, TX to self ,	
FILE SAU-3-10 CLASS: THIRD CLASS HEADRIGHT	
22Conditional Certificate #1994, December 20, 1838, issued to A. M. Davidson by San Augustine County Board of Land Commissioners, immigration date: not stated, amount granted: 640 acres	
22, p. 46, 1838: San Augustine, TX 588 A. M. Davidson.	
22p. 58, 1839: " " 377	
231839 San Augustine County Tax Roll - Daveson, A.M., p. 18	
Unconditional Certificate 377, April 6, 1846, issued to A. M. Davidson by San Augustine County Board of Land Commissions, immigration date: not stated, amount granted: 640 acres,	
Field Notes: survey date -April 29, 1842 by virtue of Certificate 1984, acres surveyed - 640, in current county of San Augustine, Abstract # 1056	
File 10 - San Augustine 3rd Class - Field Notes 640 Acres - A.M. Davidson	
Files in the office the 7th July 1842 Examined and Found Correct	
First Settlers - San Augustine County, Gifford White	
Third Class Headright No. 1984, dated 30 Dec 1839 - 640 acres - A. M. Davidson - Date of Emigration 11 Nov. 1839,	
1839 San Augustine County Tax Roll - Daveson, A.M.	
1840 Census of the Republic of Texas - San Augustine County - A. M. Davidson	
1840 San Augustine County Tax Roll - Davidson, A.M.	
1840 Census of the Republic of Texas, V. White:	
P. 172 Davidson, A.M. 1T550	
P. 178 Burditt, Jesse T800, 18 slaves	
(T-# of acres owned under a completed title with patent from the General Land Office)	
24, This book describes Republic of Texas in 1842, excerpts from travels in Austin area.	
231842 San Augustine County Tax Roll - Davidson, A.M.	
231844 San Augustine County Tax Roll - Daveson, A.M.	
251846 San Augustine County Tax Roll - Davidson, A.M. San Augustine County Tax Roll: 1839, 1840, 1842, 1844, 1846	
266 Apr 1846 - No. 377 - A.M. Davidson entitled to 640 acres of land by virtue of Certificate No. 188-1984 dated 20 Dec 1839,	
27Patent: issued to - A. M. Davidson, patent date - October 28, 1848, patent volume - 4	
281850 Census - Travis, TX - #126 (\$3000) (Living next to William Burdett - brother of Elizabeth or Martha Elizabeth Davidson, Joel Burdett, Joseph Rowe, Jesse Burdett families - see census)	
Andrew Davidson 37/M/TN Farmer; Elizabeth 34/TN, Lavina 16/TN, James 13/TN, Margaret 11/TX, John 6/TX, Almeda 4/TX	
2923 May 1853-Deed-Andrew M. Davidson, TCT to Henry Thomas TCT	
30School Census 1854 - Travis Co., TX shows:	
Parent: Andrew Davidson	
Children: Margaret, John, and Amelia Davidson	
311860 Census - Travis County, TX ( Schedule No. 2 - List of Slave Owners - indicates A. M. Davidson owned 15 slaves and 3 slave houses.) Family consisted of A.M. & M.E. Davidson, their children: John/16, Almeda/14, Alice/7, Andrew/2, Martha/1.,	
321880 Federal Census, Pre. 6, Travis Co., TX - Pg. 25, SD 5, ED 121 - Davidson, Andrew M. & Mary, Smith Wade & Alice, Beam, Silas and Martha	

Last Modified 18 Feb 2001

Created: 18 Feb 2001 by EasyTree for Windows95

<b>Name</b>	<b>Andrew M. DAVIDSON,<sup>1</sup></b>
<b>Spouse</b>	<b>Martha Elizabeth A. BURDITT</b>
<p>33According to Robert Henry, in his narration to Alfred E. Menn, he hired out, "I was doin' plowin' on the Andy Davidson fahm, on whut was den called Birdie's Prairie, near where i live here now. I was gettin' fifteen dollahs a month fo' my work. My folks lived in a house wid me. Fathaw was rentin' land from Mr. Davidson on de thirds and fourths. We made good crops nigh every year. We raised cotton and cawn, but never no cane. Dere was enough grass fo' all times fo' de cattle. We cut de wild bottom grass and cure it fo' de winter's use. Data grass would grow to waist high. I think dat we stayed on de Davidson fahm fo' about a year...."</p>	
<b>10A.M. Davidson buried Oakwood Cemetery, Austin, TX, Section 2, Lot 509, W 1/2, Space 1</b>	
<b>Misc. Notes</b>	
<p>3420 Mar 1853 - Andrew M. Davidson and Wm. B. Burditt, sureties - Bond/Oath, Samuel Stone to operate ferry across Colorado River.</p> <p>3 Apr 1856 sold land (with William Burdett) in Bastrop County, Tx to Fred Stency and Jacob Stency</p> <p>29Travis Co. Marriages: 18 May 1865, p. 189 - A. M. Davidson and Mrs. Mary E. Smith (Travis County, Texas Marriages) (differs with other date)</p> <p>2912 Jul 1884-61/281- WD - A. M. Davidson to Mary E. Davidson, both TCT no relationship shown.</p> <p>3518 Mar 1889 sold 800 acres, #366.</p> <p>10A. M. Davidson died of Chronic Gastro Enteritis, W. A. Morris - physician (Oakwood Cemetery Records)</p> <p>7- Thursday, August 8, 1889, Austin Daily Statesman - DIED LAST NIGHT - Mr. A. M. Davidson, an old and highly esteemed r sident of this city, died last night about 11:30 at his residence in the southeastern portion of the city. The funeral will take place this afternoon, but the hour could not be learned last night.</p> <p>617 Sept 1889 - Will probated - #1440.</p>	
<b>Notes for Martha Elizabeth A. BURDITT</b>	
<p>36PC 207 Estate, Jesse Burditt d. April 21, 1855....Martha wife of A.M. Davidson....</p> <p>14-Austin American - Description of Davidson/Littlepage Cemetery</p> <p>37Davidson/Littlepage Cemetery - Pictures of Tombstones - Martha E.A. Davidson, James Davidson, L.C. Davidson/wife of J.E. ampbell.</p> <p>38Texas State Genealogical Society Quarterly, Volume 36, No. 2 - June 1966, p. 48 - N. Pexa Library File - describes an old dru k man who disliked Rev. Milton Caperton. so the drunk man went to Milton's grave, which could be the oldest, smallest cemeter with a 6 foot chainlink fense built by the Hwy Dept on the corner next to Lockhart Hiway 183 that goes to Bergstrom AFB. It is on the left side going north into Austin downtown. There are five tombstones with six graves with the names Littlepage and Davidson, around two miles from the Caperton cemetery. He dug up Milton's grave, and took Milton's skull and threw it into his wagon and drove off with it. (I subsequently corresponded with the author of this article -- I did learn Rev. M.T. Caperton died Apr 7, 1907 in Standford, TX, however, the rest of her message was confusing and did not tie in with the article. N. Pexa 2/98)</p>	
<b>Sources</b>	
<p>1. THE ROSTER OF TEXAS DAUGHTERS REVOLUTIONARY ANCESTORS - TEXAS SOCIETY OF NSDAR, BICENTENNIAL EDITION, TEXAS 1976</p> <p>2. Marsh, Helen C. &amp; Timothy R., <i>Bedford Co. Tennesse Bible Records</i>, Marsh Historical Publications, Shelbyville, Tennessee, I, II, 1977.</p> <p>Bedford County, TN Bible Records, Vol. I, H. C. Marsh and T. R. Marsh, Marsh Historical Publications, Shelbyville, TN, 1977, . 162-68</p> <p>3. Acklen, Jeannette Tilloton, <i>Bible Records and Marriage Bonds</i>, Baltimore, 1967.</p> <p><del>BIBLICAL RECORDS AND MARRIAGE BONDS</del>, Tennessee Records, compiled by Jeannette Tillotson Acklen, Baltimore,</p>	

Last Modified 18 Feb 2001.

Created: 18 Feb 2001 by EasyTree for Windows95

Name	Andrew M. DAVIDSON, <sup>1</sup>
Spouse	Martha Elizabeth A. BURDITT
<b>Sources (Continued)</b> 4. Bedford County, TN Bible Records, Vol. I, Helen & Timothy Marsh, Marsh Historical Publications, 1977 5. Soldiers of the Revolution in Bedford Co., TN, compiled by H.C. & T.R. Marsh, Shelbyville, TN p. 55. 6. Probate Minutes, Andrew M. Davidson, Vacation Term 1889 No. 1440, State of Texas, Travis County. 1883-89 - Vol. O, 1889-90 - Vol. P 7. Austin Daily Statesman, Thursday, August 8, 1889. 8. Records of Oakwood Cemetery, Austin, TX, Davidson, Berry Beverly, Smith, Hamilton, Beam -- Also correspondence relating to placement of marker on Andrew M. Davidson headstone and article - Daily Texan - Austin Texas - Sagas from another world: Austin's Oakwood Cemetery cause of death, W. A. Morris-physician. 9. City of Austin Cemetery System Internment Report 10. Records of Oakwood Cemetery, Austin, TX, Davidson, Berry Beverly, Smith, Hamilton, Beam -- Also correspondence relating to placement of marker on Andrew M. Davidson headstone and article - Daily Texan - Austin Texas - Sagas from another world: Austin's Oakwood Cemetery 11. Marriage Notice of Andrew M. Davidson and Martha Elizabeth Burditt, daughter of Jesse F. Burditt, Esq., National Banner & Nashville Daily Advertiser, Monday, 06 May 1833 - p. 2 copy from TN State Library & Archives 12. Marsh, Newspaper Vital Records of Bedford County, TN. 13. Davidson & Littlepage Cemetery, Travis County 19th Century Pioneers, p. 14 14. Austin American, 14 Aug 1967 - Unclaimed - Highway Planners Preserve Graveyard 15. Texas Dept of Transportation - Map of Littlepage/Davidson Cemetery 16. Barkley, Mary Starr, A History of Central Texas, p. 43. 17. Travis County, Texas Marriage Records 1840-1882, Price, Lucie Clift. Travis County Marriage Records, 1840-82, Edward P. Hill and Margaret J. Davidson, William C. Hill and Almedia Davidson, Lucie Clift Price, p. 156 18. Co. G - 16th Texas Infantry - Civil War - Lucie Price (reprinted in Sept. 1971 AGS) 19. The Old Tom Green Rifles - They Braved the Storm of War by Val C. Giles 20. Certificate of Marriage, Martha B. Davidson and Silas William Beam, J. C. Tally, Minister & Travis Co, TX Marriage Records, 1840-1882, by Lucie Clift Price, 1973, p. 10 21. Land Grant No. 789 - A.M. Davidson - 640 Acres - San Augustine, TX 22. White, Gifford, <i>The First Settlers of San Augustine County, Texas</i> , 1983, from originals in the General Land Office & Texas State Archives, Austin, TX. 23. Martin, Mrs. J. M., San Augustine District, Texas, Edited Census with 1837-1831840-1842-1844-1846-1848 Tax Rolls and 1826 Muster Roll, Ayish Bayou District, 1984. 24. Latham, Francis Stanton, <i>Travels in the Republic of Texas, 1842</i> , Encino Press, Austin, 1971. 25. 1835 etc. SA District - an edited Census-Martin, 1984 26. 6 Apr 1846 - No. 377 - A.M. Davidson entitled to 640 acres of land by virtue of Certificate No. 188-1984 dated 20 Dec 1839 27. 8 Oct 1849 - No. 771 - 1st Class - Public Debt of the Late Republic of Texas - \$133 due to Jesse Burditt. Texas State Archive 28. 1850 Travis Co, Texas Census 29. Some Early Travis County Texas Records - Sumner 30. School Census 1854 - Travis Co. TX 31. Travis County, Texas - The Five Schedules of the 1860 Federal Census - compiled by Alice Duggan Gracy and Emma Gene Seale Gentry, Austin, Texas, November 1967 32. 1880 Federal Census, Pre. 6, Travis Co., TX - Pg. 25, SD 5, ED 121 - Davidson, Andrew M. & Mary, Smith Wade & Alice, Beam, Silas and Martha 33. Slave Narratives, Alfred E. Menn, Travis County, WPA, District No. 9, 1937 34. Bastrop Co., Texas - 3 April 1856 - A.M. Davidson and William Burditt convey to Frederick & Jacob Stency of said county. 35. Deed - Bastrop Co., Texas - 18 Mar 1889 - A.M. and M.C. Davidson to Burleson... 36. Travis County, TX probate records - PC 207 - Estate of Jesse Burditt, d. 21 Apr 1855 intestate. 37. Davidson/Littlepage Cemetery - Pictures of Tombstones - Martha E.A. Davidson, James Davidson, L.C. Davidson/wife of J.E. Campbell. 38. Texas State Genealogical Society Quarterly, Volume 36, No. 2 - June 1966, p. 48 - N. Pexa Library File	

# Austin Genealogical Society

## GRAY GOLDEN MEMORIAL

CONTRIBUTIONS, EITHER IN MONETARY OR BOOK FORM, WILL BE USED  
TO PROVIDE BOOKS FOR THE TEXAS STATE LIBRARY, GENEALOGY SECTION,  
BY THE AUSTIN GENEALOGICAL SOCIETY

IN THE NAME OF

FOR

☐ MEMORIAL

☐ HONOR

☐ BIRTHDAY

☐ ANNIVERSARY

If contribution is in form of a book, please list:

Author: \_\_\_\_\_

Title: \_\_\_\_\_

FROM

Name: \_\_\_\_\_

Address: \_\_\_\_\_

City: \_\_\_\_\_ State: \_\_\_\_\_ Zip: \_\_\_\_\_

SEND ACKNOWLEDGEMENT TO

Name: \_\_\_\_\_

Address: \_\_\_\_\_

City: \_\_\_\_\_ State: \_\_\_\_\_ Zip: \_\_\_\_\_

Make check payable to: **AGS--GOLDEN MEMORIAL**

Mail to: **Austin Genealogical Society Memorial**  
**c/o Treasurer**  
**P. O. Box 1507**  
**Austin, TX 78767-1507**

Contributions to this fund are tax-deductible.

# Austin Genealogical Society

## Membership Application Form

We Invite **YOU** to Join ...

**PURPOSE:** To cooperate with and help others interested in genealogical research. The Society contributes books and genealogical information to the Texas State Library Genealogy Collection. Society activities include an annual Seminar in August and special workshops during the year. All regular meetings are free, open to the public, and feature informative and interesting speakers. Visitors are always welcome!

**BENEFITS:** Each member household receives the Austin Genealogical Society Quarterly: a monthly newsletter and a membership handbook. Individual members may publish two pages of family history in the June Quarterly. Those with family memberships may publish four pages. Deadline is the first week in May. Material should be mailed directly to Mr. Bill Koehler, 4500 Hyridge Dr., Austin, TX 78759. Deadline for listing in Membership Handbook is 1 Feb. each year.

**MEETINGS:** Highland Park Baptist Park, 5206 Balcones Drive, at 7:30 PM on the fourth Tuesday of each month (except August and December). You may come an hour early and visit informally with other members while the Board Meets separately.

**DUES:** Calendar year 2001, due 01 Jan 2001.

**Individual Membership** is \$20.00. **Family Membership** (couple or family) is \$30.00. **Half-year Membership** after 01 July is \$10.00 and you receive only the publications produced after the date you join. For those who want to assist the Society in a larger way, we have established two new categories of membership. For \$100/yr you can become a **Patron of the AGS**. It is also possible to become a life member. If you are under the age of 65 a **Lifetime Membership** is \$500. If you are 65 or older, a **Lifetime Membership** is \$300. Lifetime memberships are only available to individuals, not organizations.

**TO JOIN:** Complete the following and mail with check to:

AUSTIN GENEALOGICAL SOCIETY  
ATTN: **Membership**  
P.O. Box 1507  
Austin, TX 78767-1507

IS THIS A NEW MEMBERSHIP OR A RENEWAL?

CLASS OF MEMBERSHIP:

NAME: (as you want it printed in the membership book.)

ADDRESS:

CITY:

STATE:

ZIP:

E-mail ADDRESS:

PHONE NO. (Home)

(Work)

DO YOU WANT YOUR ADDRESS SHOWN IN THE ANNUAL MEMBERSHIP HANDBOOK? \_\_\_\_\_

DO YOU WANT YOUR e-mail ADDRESS SHOWN IN THE ANNUAL MEMBERSHIP HANDBOOK? \_\_\_\_\_

IF YOU WISH, PLEASE LIST UP TO FOUR SURNAMES YOU ARE RESEARCHING. THESE WILL BE INCLUDED IN THE MEMBERSHIP HANDBOOK AND ON OUR WEB PAGE:

\_\_\_\_\_

\_\_\_\_\_

\_\_\_\_\_

\_\_\_\_\_



# **A**

**Abercrombie**  
Geo., 11

**Able**  
James Milton, M&M, 11

**Ables**  
Jo, 16  
W.M., Mrs., 11

**Acklen**  
Jeannette Tilloton, 43

**Adams**  
D.E., M&M, 11  
F.M., Mrs., 11  
J.K., M&M, 11  
John A., Mrs. (Rebecca), 11

**Akard**  
Ben W., M&M, 11

**Albin**  
J.J., 11

**Alexander**  
G.H., Mrs., 11

**Allard**  
G.W., 11

**Allee**  
J.M., Mrs., 11

**Allen**  
A.T., 11  
J.A., M&M, 11  
John Hudson, 11  
Josie, Mrs., 11  
W.E., Mrs., 11

**Allie**  
Linda B., 8

**Allison**  
T.J., 11

**Allred**  
Rennie, Sr., 11

**Alston**  
Otis, 11

**Amburgan**  
Japhtha J., 11

**Ancell**  
Geo. B., 11

**Anderson**  
R.G., 11  
Riley, 11  
T.L. Mrs. (Mary Paschall), 11  
William W., 11

**Annis**  
J.T.L., Mrs., 11

**Ansley**  
J.O., M&M, 11

**Applewhite**  
J.H., 11

**Archer**  
J.C., Mrs., 11

**Armstrong**  
Frank C., 11  
Hugh Rodman, 11

**Arnold**  
C.E., Mrs., 11  
Cora (Elliot?), 11  
Gertrude (Braidfoot), 11  
L.V., 11  
M.F., 11  
M.F., Mrs. (Lawrence), 11

**Ash**  
W.B., 11

**Ashbrook**  
J.B., 11

**Atkins**  
A.A., M&M, 11

**Auburg**  
Sarah (Baker), 11

**Austin**  
H.J., M&M, 11  
W.B. Mrs. (Woody), 11

**Autry**  
John, 11

**Ayers**  
J.G., 11  
Rebecca (Langston), 11

**Aynes**  
James W. M&M, 11

# **B**

**Baakley**  
J.G.Mrs., 13  
John G., 13

**Babcock**  
H.N., 11

**Bachman**  
J.W.R., 12

**Bade**  
Henry, 12

**Badgett**  
W.H., 12

**Baggett**  
E.B., 12  
G.W., M&M, 12

**Bailey**  
J.H., Mrs., 12

**Baker**  
A.A., Mrs., 12  
Billie, 12  
J.A., Mrs., 12  
Jefferson T., 12  
J.R., M&M, 12  
Kate, Mrs., 12  
Sarah, 11, 28  
W.V.P. (Billy), 12

**Ball**  
William M., 12

**Ballard**  
O.E., Mrs. (Wallace), 12

**Ballentine**  
Mary F., Mrs., 12

**Banner**  
Earnest B., 12

**Bardwell**  
Glenn, M&M, 12

**Barkley**  
Mary Starr, 44

**Barnes**  
F.E., M&M, 12  
J.S.M&M, 12

**Barnett**  
E.G., 12  
Elisah Green, 12  
E.V., Mrs., 12

**Barnhill**  
Martin, 12

**Barrick**  
Ella L., Mrs., 12

**Barton**  
B.C. M&M, 12

**Bates**  
Bill, 31  
Fincy C., 12  
Mary, Mrs., 12

**Baugh**

W.M., 12

**Baughman**  
Mike J., 12

**Beaird**  
W.W., 12

**Beam**  
44

**Beam**  
Martha B. (Davidson), 44  
Martha B.(Mattie) (Davidson), 41  
Nancy, 39  
Silas & Martha, 42  
Silas William, 44

**Bearden**  
C.P., 12

**Beasley**  
A.J.Mrs., 12  
A.W., 12

**Beauchamp**  
William T., 12  
W.T.M&M, 12

**Beaumont**  
G.B., Dr. & Mrs., 12

**Beaver**  
M.E.M&M, 12

**Beckham**  
William L., 12

**Bedford**  
W.G.Mrs., 12

**Behrens**  
August F., 12

**Belcher**  
John H., 12

**Bell**  
Lucy Mrs., 12  
T. Edgar (Edd), 12  
W.E., 12

**Bellamy**  
L.W.Mrs., 12

**Bendley**  
D.C. Mrs, 13

**Benedict**  
W.H., 12

**Benham**  
S.A., 12

**Bennett**  
James H M&M, 13

**Benton**  
J.C., Mrs., 13

**Berry**  
44

**Bessire**  
P.E.Mrs., 13

**Beverly**  
44

**Biggs**  
R.A.Mrs., 13

**Bigham**  
J.F., 13

**Bighorn(?)**  
W.R., 13

**Birdwell**  
Pauline, 13

**Bishop**  
Donald E., 24

**Black**  
George W., Mrs.(Mattie Price), 13

**Blackburn**  
M.V.Mrs., 13

**Blacklock**  
J.M., 13

**Blair**  
W.J., 13

**Blake**  
J.T.M&M, 13

**Blankenship**  
A.W.M&M, 13  
W.H.M&M, 13

**Bledsoe**  
R.C.Mrs., 13

**Blue**  
Henry, 13

**Blundell**  
R.F., 13

**Bobo**  
Z.B. M&M, 13

**Bogart**  
W.F.Dr. Mrs., 13

**Bohannan**  
L.W., 13

**Boler**  
J.M., 13

**Boles**  
E.W., 13

**Bollinger**  
D.B.M&M, 13

**Booker**  
Nannie (Fuller?), 13

**Boon**  
S.H.M&M, 13

**Boren**  
Alex M&M, 13  
J.M., 13

**Bottoms**  
W.H., 13

**Boughman**  
M.J., 13

**Bousman**  
Louis P. M&M, 13

**Bowen**  
B.K.M&M, 13

**Boyd**  
I.W., 13  
R.C. M&M, 13  
Walter, 13  
W.H. & Chas (son), 13

**Boyle**  
J.W Mrs., 13  
J.W.M&M, 13

**Boyles**  
C.S., 13

**Bozzell**  
Lon, M&M, 13

**Bradford**  
J.H., 13

**Bradstreet**  
H.C.M&M, 13

**Bragg**  
J.A., 13

**Braidfoot**  
Gertrude, 11

**Brandon**  
J.B., 13

**Brannan**  
C.H., 13

**Brannon**  
J.R., M&M, 14

**Brashear**  
J.W Judge, 14

**Braun**  
Sarah, Mrs., 14

**Brawne**  
George, 14

**Bray**  
Sarah Jane Pricilla Stone, 14

- Brice**, 25  
**Brightwell**  
 J.P. Mrs., 14  
**Brimberry**  
 Samuel E., 14  
**Brisco**  
 J.M. Mrs., 14  
**Britain**  
 G.I., Rev., 14  
**Browder**  
 Rufus, 14  
**Brown**  
 C.L., 14  
 Emma, Mrs., 14  
 J.H., M&M, 14  
 John C., Sr., 14  
 John R., 14  
 J.P. & Edwin (son), 14  
 J.T., 14  
 N.C., 14  
**Brownfield**  
 Lansford D. M&M, 14  
 Mary Hylton, 14  
**Burditt**  
 Martha, 39  
**Brummett**  
 R.C., 14  
**Bryan**  
 J.E., 14  
 Sarah Elmira, Mrs., 14  
**Bryand**  
 W.H., 14  
**Bryant**  
 J.F. Sr., 14  
**Buchanan**  
 O.L., Mrs., 14  
**Buchanan**  
 C.M., 14  
**Bucy**  
 W.A., 14  
**Bullard**  
 Sam M. M&M, 14  
**Burditt**  
 Averilla (DeLoach), 40  
 Giles, 40  
 Jesse, 42  
 Jesse F., 39, 41, 43, 44  
 Jesse F., Jr., 39  
 Jesse F., Sr., 40  
 Joel, 42  
 Margaret (McConnell), 42  
 Martha Elizabeth A, 42  
 Martha Elizabeth A., 39, 40, 41, 43, 44  
 Mildred (Crain), 39, 40, 41  
 William, 42, 43  
 William, Major, 42  
 Wm. B., 43  
**Burditt/Burdett**  
 Patience Delacy (Hart), 40  
 William R., 40  
**Burke**  
 Ann, 19  
 Martin, 19  
 Michael, 19  
**Burkett**  
 William, 14  
**Burks**  
 J.W., 14  
 W.J. Mrs., 14  
**Burleson**, 44  
**Burns**  
 Rollie, 14  
 T.A., Col., 14  
**Burrows**  
 M.J., Mrs., 14  
**Bush**  
 Seth, 14  
 T.D. Mrs., 14  
**Butler**  
 G.H., Mrs., 14  
**Bynum**  
 W.A., 14
- C**  
**Calcote**  
 L.G., Mrs., 14  
**Caldwell**  
 J.D., 14  
 J.P., 14  
**Callahan**  
 James H., 14  
**Calvert**  
 B.C., 14  
**Calvin**  
 J.C., Mrs., 14  
**Camp**  
 S.E. Mrs., 14  
**Campbell**  
 A.T., 14  
 J.E., 44  
 Joe H., 14  
 John Eaton, 39, 41  
 Lavinia C. (Davidson), 41  
 Lavinia C. (Davidson), 39  
 Maggie, 39  
**Candle**  
 J.H. Mrs., 14  
 John T., 15  
**Caperton**  
 Milton, Rev., 39, 43  
 Milton Thompson, 39  
**Cardwell**  
 Peria (Herrin), 15  
**Carey**  
 George W., 15  
 John, 15  
**Carmack**  
 C.F., 15  
**Carpenter**  
 A.W. M&M, 15  
 J.C., 15  
 J.W., 15  
**Carrell**  
 H.H. Mrs., 15  
**Carruth**  
 Charles Robert, 8, 10, 15  
 E.L., 15  
 Mary Jane (Ross), 10  
 Mary (Lewis), 10  
 M.P., 15  
 W.R. (Dick), 15  
**Carter**  
 A.M. Mrs., 15  
 H. Lee., 15  
 J.W., Mrs., 15  
 P. S., 15  
 P.H., 15  
**Casey**  
 J.E. M&M, 15  
 W.D. M&M, 15  
**Cathy**  
 J.H., 15
- Chadwick**  
 Kate (Spangler), 15  
**Chambers**  
 Hattie (Watts), 15  
 John A., 15  
 Lemuel, 15  
**Chandler**  
 E.A. Mrs., 15  
 Emma A., 15  
**Cheairs**  
 John M., 15  
**Cheeves**  
 Elton, 15  
**Childers**  
 J.A., 15  
 John D., 15  
**Childs**  
 S.R., M&M, 15  
**Chilton**  
 J.E., 15  
**Chism**  
 Matt H., Dr., 15  
**Chisum**  
 James Monroe, 15  
**Chorn**  
 E.H., 15  
**Christian**  
 J.A., Mrs., 15  
**Chumbley**  
 N.B., M&M, 15  
**Clabaugh**  
 S.N., 15  
**Clack**  
 Mary Hampton, 15  
**Clanton**, 10  
**Clarida**  
 W.H., 15  
**Clark**  
 A.A. Mrs., 15  
 A.J., 15  
 J.C., 15  
 Joe, 15  
 J.P., 15  
 Lavinia, Mrs., 15  
 Randolph, 15  
 W.K., 15  
**Clements**  
 J.S., 15  
 Rachael, 15  
**Clewis**  
 J.D., 16  
**Click**  
 Creed Matthias, 16  
**Cline**  
 Dora, 31  
 Dora Barbara, 32  
**Clousnitzer**  
 E.A., 16  
**Coats**  
 Lee A., 16  
**Cochran**  
 W.C., 16  
**Cockrell**  
 E., 16  
**Coe**  
 A.J., 16  
**Coen**  
 Madilyn, 2  
**Coffey**  
 Fogg, 16  
**Cohorn**  
 F.G., 16
- Coker**  
 Alf C., 16  
**Colbaugh**  
 Sam, 16  
**Cole**  
 S.A., 16  
**Collett**  
 J.C., 16  
**Collier**  
 M.J., 16  
**Collins**  
 Jo (Ables), 16  
**Conaway**  
 C.P., Mrs., 16  
**Connell**  
 W.N., 16  
**Conner**  
 A.H., 16  
 A.J. (Hank), 16  
 C.E., 16  
 C.W. (Charley), 16  
 Fletcher, 16  
**Cook**  
 R.H., 16  
**Cooke**  
 Robert, Dr., 16  
 Sarah J. Mrs., 16  
 W.L., 16  
**Cooker**  
 E.M., Mrs., 16  
**Coons**  
 Ida L., Mrs., 16  
**Cooper**  
 A.Q. M&M, 16  
 E.W., 16  
 Jacob M., 16  
 Nora E., Mrs., 16  
**Copeland**  
 Callic, Mrs., 16  
**Corbett**  
 T.M., M&M, 16  
**Cornelius**  
 F., 16  
**Cornils**  
 B.A., M&M, 16  
**Cosby**  
 M.E., Mrs., 16  
**Costello**  
 Ann (Burke), 19  
 Julia "Judy", 19, 20  
 Peter, 19  
**Costephens**  
 J.E., 16  
**Cotten**  
 S.A., 16  
**Couch**  
 J.A., Sr., Mrs., 16  
**Counts**  
 H.A., 16  
**Coursey**  
 A.C., 16  
**Cowan**  
 T.J., M&M, 16  
**Cowden**  
 Jeff D., 16  
 William Frederick, 16  
**Cowling**  
 S.W., Mrs., 16  
**Cox**  
 A.B. M&M, 16  
 J.H., Mrs., 16  
 John R., Mrs., 16

# AGS Quarterly, Vol XLII, 1 (Mar. 2001) Name Index

- M.J.,Mrs., 17**  
**Cozzens**  
 L.P., 17  
**Craighead**  
 E.C.,Mrs., 17  
**Crain**  
 Ambrose, 40  
 Elizabeth (), 40  
 Joel, 40  
 Mildred, 39, 40, 41  
 Rachel (), 40  
**Crane**  
 Ambrose, 39  
 Emily, 39  
 Madilyn (Coen), 2  
 Mamie Douthit, Mrs., 17  
 Mary (Polly) (), 39  
 R.C., 17  
**Cravey**  
 H.C., M&M, 17  
**Cravy**  
 M.K., Mrs., 17  
**Crawford**  
 W.H., M&M, 17  
**Crenshaw**  
 Albert L., 17  
**Cretsinger**  
 C.T., 17  
**Crockett**  
 Ashley W., 17  
 M.E., Mrs., 17  
**Croft**  
 W.C., 17  
**Cross**  
 Jacob, 17  
**Crossett**  
 Hattie, Mrs., 17  
**Crouch**  
 S.E., Mrs., 17  
**Crow**  
 J.G., 17  
 Permelia, Mrs., 17  
**Crowe**  
 J.V. (Van), 17  
**Crowley**  
 J.S., 17  
**Crownover**  
 E.J. Mrs., 17  
**Crump**  
 J.H., 17  
 S.B., 17  
**Culver**  
 S.H., 17  
**Cunningham**  
 W., 17  
**Curlee**  
 J.J., 17  
**Curry**  
 C.N. Mrs., 17  
 Elizabeth (Grandma), Mrs., 17  
 E.S., M&M, 17  
 J.C., M&M, 17  
**Curtis**  
 Malcolm, 17
- D**  
**Danford**  
 Karel, 1  
**Darter**  
 Annie Mary (Gordon), 20  
 Isaac Michael, Dr., 20
- Rena & Bill, 22**  
 Rena (McLaughlin), 20  
 William "Bill" Alexander, 20  
**Daveson**  
 A.M., 42  
**Davidson**  
 Lavinia C., 39  
**Davidson**  
 39, 44  
**Davidson**  
 Alice, 41, 42  
 Almeda, 42  
 Almedia, 41, 44  
 A.M., 42, 43  
 Amelia, 42  
 Andrew, 42  
 Andrew M., 39, 40, 41, 42, 43  
 Andrew M. & Mary, 42  
 Andrew M., Jr, Dr., 41  
 Andy, 43  
 Elizabeth, 42  
 Elizabeth/Martha Elizabeth, 42  
 James, 39, 40, 42, 44  
 James A., 39, 41  
 John, 40, 41, 42  
 John, Sr., 40  
 Lavinia, 42  
 Lavinia C., 41  
 L.C., 39, 44  
 Margaret, 42  
 Margaret J., 41  
 Margaret (McConnell), 40  
 Martha, 40, 42  
 Martha B., 44  
 Martha B. (Mattie), 40, 41  
 Martha (Bruditt), 39  
 Martha (Davidson), 40  
 Martha E.A., 39, 44  
 Martha Elizabeth A., 39  
 Martha Elizabeth A. (Burditt), 42  
 Martha Elizabeth A. (Burditt), 41, 43, 44  
 Mary E., 43  
 Mary E. Smith, Mrs., 43  
 Mary Elizabeth Berry, 41  
 Mary (McConnell), 40  
 William D., (Major), 40  
**Davidson & Littlepage, 44**  
**DeLoach**  
 Averilla, 40  
**Donaldson**  
 Wanda, 2
- E**  
**Eichenberger**  
 Myra, 19  
**Elizabeth II**  
 Queen, 22
- F**  
**Forister**  
 M.C., 39
- G**  
**Garrett**  
 Risetta, 36  
 Sydney A., 33  
 William H., 36  
**Gentry**  
 Emma Gene Seale, 44
- George**  
 Annie Lou (House), 28  
 John Chaffin, 28  
**Giles**  
 Val C., 44  
**Golden**  
 Gray, 2  
**Gordon**  
 Annie Mary, 20  
**Gracy**  
 Alice Duggan, 44
- H**  
**Hamilton, 44**  
**Hardy, 10**  
**Hart**  
 Patience Delacy, 40  
**Hayes**  
 Belinda, 35, 36, 38  
**Henderson**  
 Lorrie, 1  
 Lorrie F., 18  
**Henley**  
 Marilyn, 1, 23  
**Henry**  
 O, 19  
 Robert, 43  
**Herrin**  
 Peria, 15  
**Hill**  
 Almedia (Davidson), 41, 44  
 Edward Peyton, Sr., 41  
 Margaret J. (Davidson), 41  
 William C., 41, 44  
**House, 25**  
**House**  
 Adell, 31  
 Agnes, 35  
 Annie, 30, 32, 37  
 Annie Lou, 28, 29, 31  
 Annie Lou (House), 29  
 Charlotte "Lottie" Marlinda (Robbins), 27  
 Clara, 31  
 Clementine, 28, 29, 30, 31  
 Clemie, 29, 30, 32, 37  
 Clemmie, 30  
 Dora, 31  
 Dora Barbara (Cline), 32  
 Dora (Cline), 31  
 Effie, 31  
 Elbert, 30  
 Elijah, 29, 30, 32, 37  
 Elisha, 31  
 Elisha Taylor, 26, 28, 31  
 Elizabeth, 29, 32, 35, 36, 38  
 Elizabeth (Perkins), 25, 26, 27, 33, 34, 35, 36, 37, 38  
 E.T., 31, 32  
 Eunice, 31  
 Frances, 29  
 Frances C.F., Mrs. (Keel), 29, 36  
 Francis, 27, 29, 30, 31  
 Francis C.F. (Keel), 33  
 Grace, 31  
 Green, 29, 33, 35, 36, 38  
 Harrison, 29, 34, 35, 36, 38  
 Hettie, 28, 29, 30, 32, 37  
 James M., 29, 30, 31, 32, 37  
 Jane, 29, 30, 31, 32, 37
- Jane (Moore), 26, 27, 28, 29**  
 Jasper N., 29, 30, 31  
 Jasper Newton, 27, 30  
 Jehu, 29  
 Jehu M., 30, 31  
 Jehu M "J.E.H.", 30  
 Jehuu M. "J.E.H.", 28  
 J.M. James Mac, 27, 30  
 John, 25, 26, 27, 29, 33, 34, 35, 36, 37, 38  
 John M., 29, 30, 32, 37  
 L.M., 30  
 Lottie M., 30  
 Mary, 29, 32, 35, 36, 38  
 Mary A., 34  
 Mary (Schmidt), 26, 28, 32  
 May, 31  
 Nona, 30  
 Ollan, 31  
 Pleasant, 29, 35, 36, 38  
 Pleasant B., 34, 37  
 Robert, 29, 30, 31, 32, 35, 36, 37, 38  
 Robert (Bob), 25, 26, 27, 28, 29, 31, 32, 33  
 Rosa, 26, 31, 32  
 Sarah, 29, 30, 31, 34, 35, 36, 38  
 Sarah (Baker), 28  
 Sydney A. (Garrett), 33  
 Sydoria, 33, 35, 37, 38  
 Thomas, 29, 30, 32, 37  
 Thomas D., 28, 29, 30, 31  
 Victoria, 29, 30, 31, 37  
 Victoria C., 27, 30  
 William H., 33  
 Willie, 30  
 Wm.H., 35, 38
- Howze**  
 Betsy (Moore), 25, 33  
 Isaac, 25  
 John, 25  
 Mary (Marriott/Merritt), 25  
 William, 25, 33  
**Howze/House**  
 Isaac, 25  
**Hudson**  
 W.I., 8
- J**  
**James**  
 Mary Ann(Walker), 18  
 Will, 18
- K**  
**Keel**  
 Frances C.F., Mrs., 29, 36  
 Francis C.F., 29, 33  
**Knight**  
 Emily (Crane), 39  
 James, 39  
 Lewis, 39  
 Martha, 39  
**Kroh**  
 Cora E.(Phelps), 21  
 Evangeline "Van", 21, 22  
 James Henry, 21
- L**

**Lambeth**  
Maggie, 2

**Langston**  
Rebecca, 11

**Latham**  
Francis Stanton, 44

**Lewis**  
Mary, 10

**Littlepage**, 39

**Littlepage**  
James Arbuckle, 39  
James Beverly, 39  
Martha E., 39  
Martha (Knight), 39  
Susan V., 39  
Susanna Shanklin  
(Van)Arsdale, 39

**Locklin**  
Charles, 1

**Lutz**  
Carol, 1

**M**

**Marriott/Merritt**  
Mary, 25

**Marsh**  
H.C. & T.R., 44  
Helen & Timothy, 44  
Helen C. & Timothy R., 43

**Martin**  
J.M., Mrs., 44

**McBee**  
Henry, 10

**McCain**  
J.J., 32

**McConnell**  
John, Sr., 40  
Margaret, 40, 42  
Mary, 40  
Mary (Winsley), 40

**McLaughlin**  
Allan Wheatley, 21  
Amelia Jane (Wheatley), 19, 21  
Billy Mildred, 20  
C.E., 20  
Chatham Ewing, 19, 20, 21, 22  
DeWitt Terheun, 21  
Elias, 19, 21  
Evangeline "Van" (Kroh), 21  
Fred, 19  
Harrison Kroh, 21  
Julia "Judy" (Costello), 20  
Margaret Leah, 20  
Martin, 20  
Martin Michael, 20  
Maud Ann, 20  
Mickie, 22  
Mildred Amelia "Millie"  
"Mickie", 22  
Patricia "Pat", 21  
Rena, 20, 21  
Rowena Amelia (Terheun), 19, 20, 21, 22  
Rowena Totten, 20  
Ruby lone, 21  
Ruby K. (Spears), 21

**Menn**  
Alfred E., 43, 44

**Milligan**  
Mickie, 22

Mildred Amelia (McLaughlin), 22

William "Scott", 22

William Sutherland, 22

**Moore**  
Arrana (), 26, 27, 30  
Betsy, 25, 33  
Drusilla (), 26  
Elizabeth, 30  
George, 30  
Greggory, 26, 27, 29, 30, 37  
Jane, 26, 27, 28, 29, 30, 37  
John, 30  
Martha, 30  
Mary, 30  
Thomas, 30  
William, 30

**Morris**  
W.A., 43, 44

**N**

**Noelke**  
Wynnelle, 1

**P**

**Pargament**  
Barbara (Peters), 25, 26, 27, 33

**Perkins**  
Elizabeth, 25, 26, 27, 33, 34, 35, 36, 37, 38  
Sarah, 35  
Yvonne, 3  
Yvonne S., 23

**Perry**  
William Estel, 39

**Peters**  
Barbara, 25, 26, 27, 33  
Eunice (House), 31

**Pexa**  
Nancy (Beam), 39

**Phelps**  
Cora E., 21

**Preston**  
J.J., 32

**Price**  
Anna, 1  
Lucy Clift, 44

**R**

**Read**, 25

**Reagan**  
Ronald, 24

**Reese**, 18

**Reese**  
Mary Lou (Myra), 18  
Mavis, 18  
Myrtle, 18  
Thomas Jefferson, 18

**Robbins**  
Charlotte "Lottie" Marlanda, 27

**Roberts**  
Phil, 1

**Ross**  
Mary Jane, 10

**Rowe**  
Joseph, 42

**Rudolph**  
Allan Wheatley, 21

**Rugeley**  
Helen H., 24

## S

**Schmidt**  
K., 32  
Kasper, 26  
Mary, 26, 28, 32  
N., 32  
Narcissus (), 26

**Sinclair**  
Rosa (House), 26, 31  
Zeb, 31  
Zeb. B., 26

**Smith**, 44

**Smith**  
Alice (Davidson), 41  
Mary E., Mrs., 43  
Wade & Alice, 42  
Wade Morris, 41

**Spangler**  
Kate, 15

**Spears**  
Laura K., 21  
Robert, 21  
Ruby K., 21

**Sperry**  
Emma Delia (Della), 19

**Stency**  
Fred, 43  
Frederick & Jacob, 44  
Jacob, 43

**Stovall**  
Bartholomew, 24

**T**

**Tally**  
J.C., 44

**TerHeun**  
Clare Harding (Weber), 22  
DeWitt McLaughlin, 21, 22  
Evangeline "Van" (Kroh), 22  
Phelps Kroh, 21

**Terheun**  
Rowena Amelia, 19, 20, 21, 22

**Thomas**  
Henry, 42

**Turner**  
Freda R., 24

**Tyson**  
Betsy, 1

**V**

**Van**  
Susanna Shanklin, 39

**W**

**Walker**, 18

**Walker**  
Allan, 19  
Charles Hugh, 19  
Chatham Ewing, Jr., 19  
Della, 19  
Hugh, 19  
Jean, 2  
Jes Ward, 18  
Joseph, 18  
Malcolm, 19  
Mary, 18  
Mary Ann, 18  
Maud, 19

Nina, 19

Thomas, 18

William, 18

Winifred, 19

**Wallace**  
Theodore William, 27  
Victoria C. (House), 27

**Watts**  
Hattie, 15

**Weber**  
Clare Harding, 22

**Wheatley**  
Amelia Jane, 19, 21

**White**  
James, 39  
Maggie (Campbell), 39  
Robert Emmett, 39

**Wilder**, 18

**Wilder**  
John Silas, 18  
John W., 18  
Mary Lou (Reese), 18

**Windsor**  
Philip, Prince, 22

**Winsley**  
Mary, 40

**Woodcock**  
Allan, 21  
Benjamin Stream, 21  
John, 21  
Ruby lone (McLaughlin), 21

# *The Austin Genealogical Society*

## GENERAL INFORMATION

**PURPOSE:** Austin Genealogical Society was organized in 1960 as a not-for-profit corporation chartered by the State of Texas. Its purposes are to collect and preserve genealogical and historical information about the people of Texas, particularly pertaining to the City of Austin and to Travis and surrounding counties; to instruct and assist members in genealogical research; and to publish public and private records of genealogical interest. In addition, the AGS supports the Genealogical Collection, Texas State Library by donations of books and other genealogical material. Gifts and bequests to AGS are tax-deductible to the full extent permitted by law.

**MEMBERSHIP** is open to all upon payment of annual dues. Classes: Individual: \$20; Family (two in the same household): \$30.00; Patron of AGS: \$100.00; Lifetime: \$500.00 (\$300 if over 65). All classes entitle one copy of each Quarterly and monthly Newsletter, as well as two pages apiece (a total of four pages for Family or higher whether one or two people submit listings) in the Ancestor Listing issue (June). **After 1 July**, dues are \$10.00 for the balance of the year, but you will only receive the publications produced after the date you join. Membership includes receipt of the annual Membership Handbook which is published each Spring.

**DUES FOR EXISTING MEMBERS** ARE PAYABLE on or before JANUARY FIRST of each year for the ensuing year. If dues are not received by 1 February, the name must be dropped from the mailing list. If membership is reinstated later and Quarterlies and Newsletters have to be mailed individually, postage must be charged. (Back Quarterlies are supplied only IF available--very few extras are printed). Send payment to **AGS Treasurer, P.O. Box 1507, Austin TX 78767-1507**.

**MEETINGS** of the general membership begin at 7:30 p.m. on the fourth Tuesday of each month except August and December. Members are encouraged to come as early as 6:30 to socialize with each other. **MEETING PLACE:** Highland Park Baptist Church, 5206 Balcones Dr.. Take Northland (FM 2222) exit off Loop 1 (Mopac). Go west one block to Balcones Dr, then left 1 ½ blks. The Church and parking lot are on right. **VISITORS ARE ALWAYS WELCOME.** The Board of Directors meets at 6:15 in a separate room.

**BOOK REVIEW POLICY:** Books on appropriate subjects related to genealogy will be reviewed, but CANNOT be reviewed in AGSQ on the basis of advertising alone. If a review copy is received by the Review Editor at 2202 W. 10th. St., Austin TX 78703 by the first of February, May, August or October, it will be reviewed in the next Quarterly, space permitting. It will then be placed in the Genealogy Collection, Texas State Library, available to all patrons.

**CHECK RETURN POLICY:** Members and other payees must pay AGS the cost of any returned check (currently \$5.00) over and above the charge their bank may impose.

**AGS QUARTERLY** is issued about the middle of March, June, September and November. Contributions are welcome, subject to editing for style/size. Contributor is completely responsible for accuracy and any copyright infringement. AGS assumes no responsibility for content of submitted material. See inside front cover for address.

**ANCESTOR LISTING PAGES** (June issue of Quarterly) must reach the Editor at 4500 Hyridge Drive, Austin TX 78759-8054 by the **TENTH OF MAY**. They must be BLACK and LEGIBLE, whether typed, hand-written, computer-printed or in superior calligraphy. Months must be SPELLED or abbreviated, not in figures. DATES SHOULD BE SHOWN in accepted genealogical style, that is, DAY, MONTH, YEAR (4 no;s.). Allow space for binding at inner margins of facing pages; i.e., your first page will be a left-hand page. Carefully check horizontal pages (reading in the 11-inch direction). Otherwise, the Editor has to position some pages upside down to prevent loss of data in the stapling-punching process. NO 8½ x14 sheets, please! You may submit Lineage or Family Group charts, Ahnentafels, narratives, cemetery inscriptions, Bible records, census data, queries, or a combination of material, just so it is not under copyright. BE SURE to proofread your material for accuracy and clarity so we will not publish faulty or incorrect data. Put name and address of submitter **on each page** in legible form (not blind embossed). Consult a recent June Quarterly for suggestions. Remember that reproductions are dimmer than originals so try to provide good quality originals.

**REMEMBER:** Individual membership secures two facing pages.  
Family or higher membership allows you four pages.

**DEADLINES** for everything in the Quarterly except book reviews: 10th of February, May, August and October. Material sent addressed only to AGS Box Number may not reach Editor in time.

**The AGS Internet Page is at [www.main.org/ags](http://www.main.org/ags)**

AUSTIN GENEALOGICAL SOCIETY

P.O. BOX 1507  
AUSTIN TX 78767-1507

Address Service Requested



Vol XLI, #1  
MAR 2001

NON-PROFIT ORG.

U.S. POSTAGE PAID  
Austin, Texas  
PERMIT NO. 2614